

| TABLE 1 - SOLDERBALL PARTS ONLY | | | | |
|---------------------------------|-------|-------|-------|-------|
| PART (POSITION) | 20 | 30 | 40 | 50 |
| MAX COPLANARITY | .0040 | .0080 | .0080 | .0100 |
| MAX T/B BOW * | .0020 | .0020 | .0020 | .0025 |

* AFTER SOLDERBALL ATTACHMENT

DO NOT SCALE FROM THIS PRINT

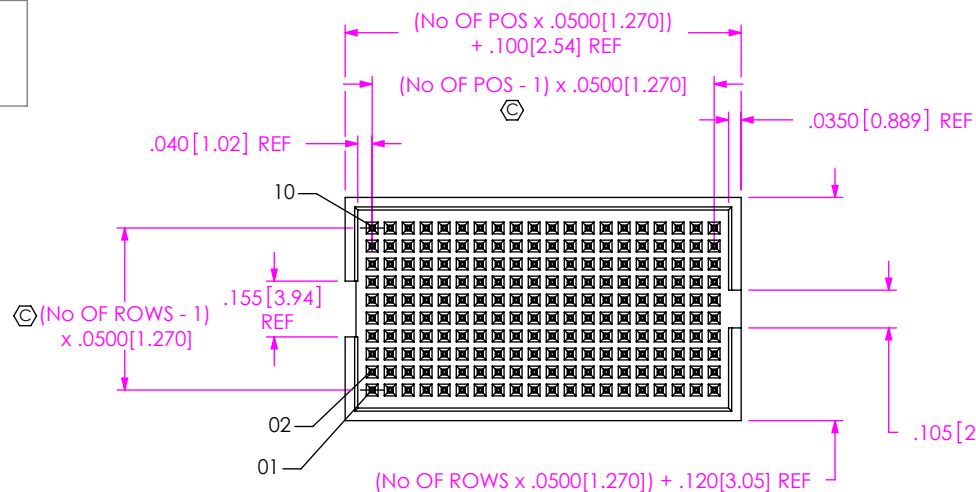
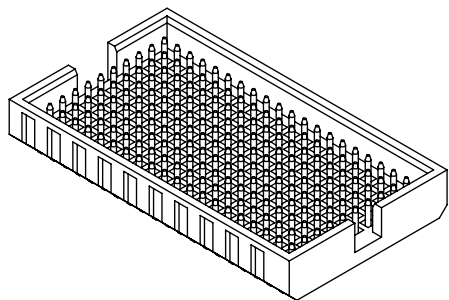
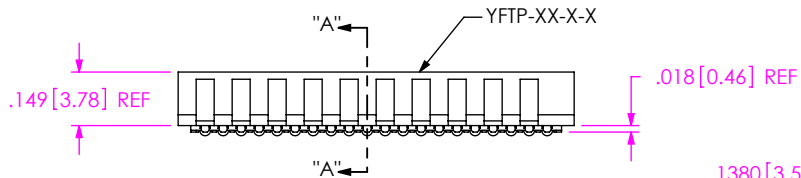


FIG 1
YFT-20-05-X-10-SB SHOWN



YFT-XX-05-X-XX-SB-XX

No OF POSITIONS
-20 THRU -50
(MULTIPLES OF 10 ONLY)

LEAD STYLE

PLATING SPECIFICATION

- G: GOLD (USE T-1R24-05B-G-1)
- H: HEAVY GOLD (USE T-1R24-05B-H-1)
- E: EXTRA HEAVY GOLD (USE T-1R24-05B-E-1)

ROW SPECIFICATION

- 10: TEN ROWS (USE YFTP-XX-X)
- 08: EIGHT ROWS (USE YFTP-XX-X)
- 05: FIVE ROWS (USE YFTP-XX-X)
- 06: SIX ROWS (USE YFTP-XX-X)
(AVAILABLE IN 20 POS. ONLY)
- 03: THREE ROWS (USE YFTP-XX-X)
(AVAILABLE IN 20 POS. ONLY)

OPTION

- K: KAPTON PAD OPTION (SEE TABLE 3 & FIG. 4, SHEET 2)
- TR: TAPE & REEL

OPTION

- SB: SOLDER BALLS: 37% PB/63% SN (USE SDB-030-6337)

T-1R24-05B-X-1

.079[2.01] REF
(SEE IN-PROCESS, SHEET 2)

2° MAX SWAY
(ANY DIRECTION)

.077[1.96]

.177[4.50]

.018[0.46] REF

.005[0.13] MAX
(SEE NOTE 7)

.1380[3.505] REF

.0160[0.406] REF

.010[0.26]

Ø .030[.76] REF SOLDERBALL
SDB-030-XXXX

SECTION "A"- "A"

NOTES:

- NOTE DELETED.
- ⊙ REPRESENTS A CRITICAL DIMENSION.
- BURR ALLOWANCE: .0015 MAX.
- NOTE DELETED.
- MINIMUM PUSHOUT FORCE: .5 LB.
- NOTE DELETED.
- MAXIMUM ALLOWABLE DISTANCE FOR SOLDER WICKING UP TERMINAL.
- .0040 MAX VARIATION BETWEEN SOLDERBALLS.
- REFER TO VISUAL INSPECTION BOARD FOR SOLDERBALL APPEARANCE CHECKS.
- THE DISTANCE FROM THE CENTER OF ANY SOLDERBALL TO THE CENTER OF ANY ADJACENT INNER PEG SHALL BE .025 ± .005.
- NOTE DELETED.
- TRAY PACKAGING CAN BE SUBSTITUTED FOR TUBES.



UNLESS OTHERWISE SPECIFIED, DIMENSIONS ARE IN INCHES.

TOLERANCES ARE:

| | |
|----------------|--------|
| DECIMALS | ANGLES |
| .XX: ± .01 | ± 2° |
| .XXX: ± .005 | |
| .XXXX: ± .0020 | |

PROPRIETARY NOTE

THIS DOCUMENT CONTAINS CONFIDENTIAL AND PROPRIETARY INFORMATION AND ALL DESIGN, MANUFACTURING, REPRODUCTION, USE, PATENT RIGHTS AND SALES RIGHTS ARE EXPRESSLY RESERVED BY SAMTEC, INC. THIS DOCUMENT SHALL NOT BE DISCLOSED, IN WHOLE OR PART, TO ANY UNAUTHORIZED PERSON OR ENTITY NOR REPRODUCED, TRANSFERRED OR INCORPORATED IN ANY OTHER PROJECT IN ANY MANNER WITHOUT THE EXPRESS WRITTEN CONSENT OF SAMTEC, INC.



520 PARK EAST BLVD, NEW ALBANY, IN 47150
PHONE: 812-944-6733 FAX: 812-948-5047
e-Mail: info@SAMTEC.com code: 55322

MATERIAL: DO NOT SCALE DRAWING
INSULATOR: LCP, COLOR: BLACK
TERMINAL: BRASS AND ALLOY 260

SHEET SCALE: 1.875:1

DESCRIPTION:
Flex, Y, Z, .050 CENTERLINE TERMINAL ASSEMBLY

DWG. NO.
YFT-XX-05-X-XX-SB-XX

BY: ERIC M 5/27/99 SHEET 1 OF 2

IN-PROCESS WITHOUT SOLDERBALLS

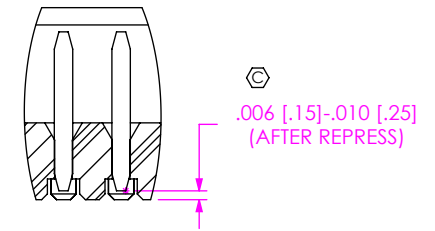


TABLE 2

| PART (POSITION) | 20 | 30 | 40 | 50 |
|-----------------|-------|-------|-------|-------|
| MAX T/B BOW | .0015 | .0020 | .0020 | .0020 |

PACKAGING TUBE
(SEE NOTE 12)

TABLE 4

| ROW OPTION | TUBE | PLUG |
|------------|---------------|-------|
| -03 | PT-1-24-01-59 | TP-24 |
| -05 | PT-1-24-01-61 | TP-03 |
| -06 | PT-1-24-14-29 | TP-07 |
| -08 | PT-1-24-02-09 | TP-07 |
| -10 | PT-1-24-16-29 | TP-07 |

[PLACE PARTS IN RESPECTIVE TUBES SIMILAR TO SHOWN BELOW]

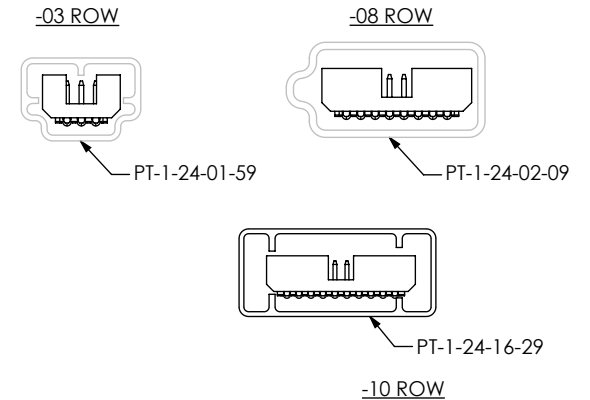
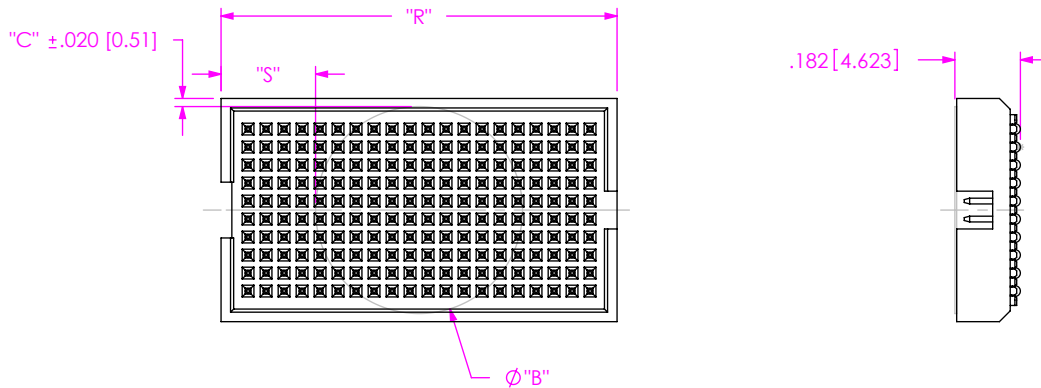


FIG 2

-K: KAPTON PAD OPTION
(YFT-120-05-X-08-K SHOWN)



$R = (\text{No OF POS} \times .0500 [1.270]) + .100 [2.54]$
 $S = ("R" - "B" / 2) \pm .020 [.51]$

TABLE 3

| ROW OPTION | "B" | "C" | KAPTON |
|------------|--------------|------------|----------------------|
| -05 | .404 [10.25] | .017 [.43] | K-DOT-.404-.500-.005 |
| -08 | .575 [14.60] | .028 [.71] | K-850-650 |
| -10 | .650 [16.50] | .015 [.38] | K-1000-800 |
| -06 | .460 [11.68] | .020 [.51] | K-850-650 |
| -03 | .325 [8.26] | .028 [.71] | K-DOT-.325-.450-.005 |

PROPRIETARY NOTE

THIS DOCUMENT CONTAINS CONFIDENTIAL AND PROPRIETARY INFORMATION AND ALL DESIGN, MANUFACTURING, REPRODUCTION, USE, PATENT RIGHTS AND SALES RIGHTS ARE EXPRESSLY RESERVED BY SAMTEC, INC. THIS DOCUMENT SHALL NOT BE DISCLOSED, IN WHOLE OR PART, TO ANY UNAUTHORIZED PERSON OR ENTITY NOR REPRODUCED, TRANSFERRED OR INCORPORATED IN ANY OTHER PROJECT IN ANY MANNER WITHOUT THE EXPRESS WRITTEN CONSENT OF SAMTEC, INC.

DO NOT SCALE DRAWING

SHEET SCALE: 1.875:1



520 PARK EAST BLVD, NEW ALBANY, IN 47150
 PHONE: 812-944-6733 FAX: 812-948-5047
 e-Mail: info@SAMTEC.com code: 55322

DESCRIPTION:
 FleX, Y, Z, .050 CENTERLINE TERMINAL ASSEMBLY

DWG. NO.
YFT-XX-05-X-XX-SB-XX

BY: ERIC M 5/27/99 SHEET 2 OF 2