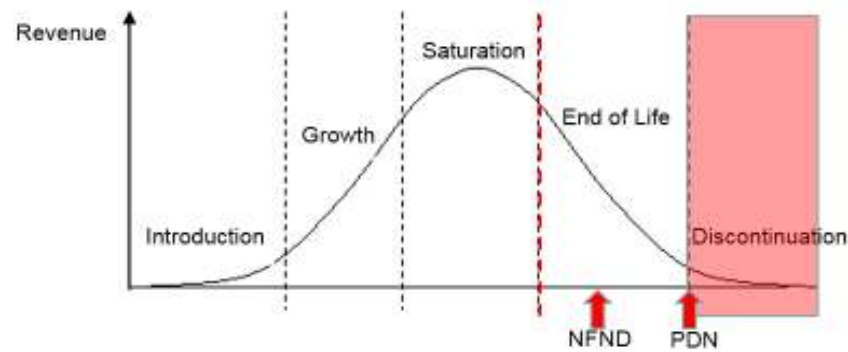


Light is OSRAM

Product Discontinuation (acc. JEDEC J-STD-048) OS-PD-2018-061

2 July 2018

Last order:	15 January 2019
Last delivery:	15 July 2019
Reason:	Collection PDN due to binning issues and portfolio streamline



Please direct your feedback to your local Sales office.

DISCONTINUED				NEW (REPLACEMENT)			
Device	Ordering Code	Function	Brand	Device	Datasheet Ordering Code	Function	Brand
LS L196							
LS L196-N1Q2-1-0-20-R18-Z	Q65111A0705	LED	SMARTLED XR	KS DELMS1.22	Q65112A1792	LED	TOPLED E1608
LS L196-N1R2-1-0-20-R18-Z	Q65111A0708	LED	SMARTLED XR	KS DELMS1.22	Q65112A1792	LED	TOPLED E1608
LS L196-P2Q2-1-0-20-R18-Z	Q65111A0704	LED	SMARTLED XR	KS DELMS1.22	Q65112A1792	LED	TOPLED E1608
LS L196-Q1R2-1-0-20-R18-Z	Q65111A0706	LED	SMARTLED XR	KS DELMS1.22	Q65112A1792	LED	TOPLED E1608
LY L196							
LY L196-P1S1-26-0-20-R18-Z	Q65111A0703	LED	SMARTLED XR	KY DELMS1.22	Q65112A1787	LED	TOPLED E1608
LY L196-P2R1-26-0-20-R18-Z	Q65111A0701	LED	SMARTLED XR	KY DELMS1.22	Q65112A1787	LED	TOPLED E1608
LY L196-Q2R2-26-0-20-R18-Z	Q65111A0700	LED	SMARTLED XR	KY DELMS1.22	Q65112A1787	LED	TOPLED E1608
LY L196-Q2R2-35-0-20-R18-Z	Q65111A0702	LED	SMARTLED XR	KY DELMS1.22	Q65112A1787	LED	TOPLED E1608
LW L28G							
LW L28G-S2T2-35K-1-10-R18-Z-XX	Q65111A1086	LED	SMARTLED	KW DELMS1.RA	Q65112A4001	LED	TOPLED E1608
LW L28G-S2T2-3K6L-1-10-R18-Z	Q65111A0227	LED	SMARTLED	KW DELMS1.RA	Q65112A4001	LED	TOPLED E1608
LW L28G-S2T2-4K4L-1-10-R18-Z	Q65111A3336	LED	SMARTLED	KW DELMS1.RA	Q65112A4001	LED	TOPLED E1608
LW L28G-S2T2-4K5L-1-10-R18-Z	Q65111A3079	LED	SMARTLED	KW DELMS1.RA	Q65112A4001	LED	TOPLED E1608
CW VHLPD2.EN							
CW VHLPD2.EN-MYMZ-L1-0-A00-S	Q65112A4385	LED	CERAMOS	on request			
CW2 FKAP81.Z1							
CW2 FKAP81.Z1-P1-T1+P2-T2-A00-R33	Q65111A9878	LED	OSLUX	CW2 FKAQ81.Z1-P1-T1+P2-T2-A00-L	Q65112A3774	LED	OSLUX

Products Affected by Product Discontinuation Notification

Number: OS-PD-2018-061

Name: Discontinuation due to binning issues and portfolio streamline

Release Date: 7/2/2018

Last Order: 1/15/2019

Last Delivery: 7/15/2019

DISCONTINUED

NEW (REPLACEMENT)

Product	QNumber	QNumber Description	Part Number	Product	QNumber	QNumber Description	Part Number
CW VHLPD2	Q65112A4385	CW VHLPD2.EN-MYMZ-L1-0-A00-S		on request		on request	
CW2 FKAP8	Q65111A9878	CW2 FKAP81.Z1-P1-T1+P2-T2-A00-R33	CW2 FKAP81.Z1-P1-T1+P2-T2	CW2 FKAQ8	Q65112A3774	CW2 FKAQ81.Z1-P1-T1+P2-T2-A00-L	
LB W5SM	Q65110A7468	LB W5SM-GXGY-35-0-350-R18-Z	LB W5SM-GXGY-35-Z	LB CRBP	Q65112A1994	LB CRBP-HXJX-46-8E8G-350-S	LB CRBP-HXJX-46-8E8G
LB W5SM	Q65110A8303	LB W5SM-GXGY-25-0-350-R18-Z	LB W5SM-GXGY-25-Z	LB CRBP	Q65112A1994	LB CRBP-HXJX-46-8E8G-350-S	LB CRBP-HXJX-46-8E8G
LCB M67S	Q65110A7422	LCB M67S-K1L1-5J6K-0-2-R18-Z-TW	LCB M67S-K1L1-5J6K-Z-TW	LCB M67S	Q65112A2828	LCB M67S-K2M1-2J8L-1	
LCB M67S	Q65110A7834	LCB M67S-K1K2-3J5L-0-2-R18-Z-F	LCB M67S-K1K2-3J5L-Z-F	LCB M67S	Q65112A2828	LCB M67S-K2M1-2J8L-1	
LCB M67S	Q65110A8108	LCB M67S-K1L1-3K4L-0-2-R18-Z-F	LCB M67S-K1L1-3K4L-Z-F	LCB M67S	Q65112A2828	LCB M67S-K2M1-2J8L-1	
LCB M67S	Q65111A1579	LCB M67S-J1K2-5J6K-0-2-R18-Z-XX	LCB M67S-J1K2-5J6K-Z-XX	LCB M67S	Q65112A2828	LCB M67S-K2M1-2J8L-1	
LCB M67S	Q65112A0920	LCB M67S-K1L1-5J6K-0-2-R18-Z-HE	LCB M67S-K1L1-5J6K-Z-HE	LCB M67S	Q65112A2828	LCB M67S-K2M1-2J8L-1	
LCW W5SM	Q65110A8675	LCW W5SM-HZJZ-6R7S-0-350-R18-Z-XX	LCW W5SM-HZJZ-6R7S-Z-XX	LCW W5SM	Q65110A9681	LCW W5SM-JXKY-4O9Q-0-350-R18-Z	LCW W5SM-JXKY-4O9Q-Z
LCW W5SM	Q65110A9656	LCW W5SM-HZJZ-5O8Q-0-350-R18-ZG-LM	LCW W5SM-HZJZ-5O8Q-0-350-R18-	LCW W5SM	Q65110A9681	LCW W5SM-JXKY-4O9Q-0-350-R18-Z	LCW W5SM-JXKY-4O9Q-Z
LCW W5SM	Q65110A9661	LCW W5SM-JXJZ-4R9T-0-350-R18-ZG-LM	LCW W5SM-JXJZ-4R9T-0-350-R18-Z	LCW W5SM	Q65110A9693	LCW W5SM-JYKY-4R9T-0-350-R18-Z	LCW W5SM-JYKY-4R9T-Z
LD H9GP	Q65111A1709	LD H9GP-3T2U-35-1-350-R18-Z	LD H9GP-3T2U-35-1-Z	LB CRBP	Q65112A1994	LB CRBP	LB CRBP-HXJX-46-8E8G
LG T676	Q65110A4309	LG T676-N2P2-24-0-20-R18-Z	LG T676-N2P2-24-Z	LG T676	Q65110A4007	LG T676-P2R1-24-0-20-R18-Z	LG T676-P2R1-24-Z
LG T676	Q65110A5143	LG T676-N2P2-24-0-20-R18-Z-KS	LG T676-N2P2-24-Z-KS	LG T676	Q65110A4007	LG T676-P2R1-24-0-20-R18-Z	LG T676-P2R1-24-Z
LS L196	Q65111A0704	LS L196-P2Q2-1-0-20-R18-Z	LS L196-P2Q2-1-Z	KS DELMS1.	Q65112A1792	KS DELMS1.22	KS DELLS1.22-Q1R2-68-E6L4
LS L196	Q65111A0705	LS L196-N1Q2-1-0-20-R18-Z	LS L196-N1Q2-1-Z	KS DELMS1.	Q65112A1792	KS DELMS1.22	KS DELLS1.22-Q1R2-68-E6L4
LS L196	Q65111A0706	LS L196-Q1R2-1-0-20-R18-Z	LS L196-Q1R2-1-Z	KS DELMS1.	Q65112A1792	KS DELMS1.22	KS DELLS1.22-Q1R2-68-E6L4
LS L196	Q65111A0708	LS L196-N1R2-1-0-20-R18-Z	LS L196-N1R2-1-Z	KS DELMS1.	Q65112A1792	KS DELMS1.22	KS DELLS1.22-Q1R2-68-E6L4
LS M67F	Q65111A7255	LS M67F-S2T2-1-1-20-R18-Z-PRE	LS M67F-S2T2-1-PRE	LS M67F	Q65112A6735	LS M67F-T2V1-1-G3R3-20-R18-Z	
LT H9GP	Q65111A0911	LT H9GP-JZKZ-26-1-350-R33-Z	LT H9GP-JZKZ-26-1-Z	LT CQBP	Q65112A3581	LT CQBP	
LT H9GP	Q65111A1717	LT H9GP-JZKZ-26-1-350-R18-Z	LT H9GP-JZKZ-26-1-Z	LT CQBP	Q65112A3581	LT CQBP	
LT H9GP	Q65111A2150	LT H9GP-KY-4-1-350-R18-Z-XX	LT H9GP-KY-4-1-XX	LT CQBP	Q65112A3581	LT CQBP	
LT H9GP	Q65111A6583	LT H9GP-KYKZ-36-1-350-R18-Z-ADB	LT H9GP-KYKZ-36-1-ADB	LT CQBP	Q65112A3581	LT CQBP	
LUW W5SM	Q65110A7260	LUW W5SM-KXKZ-6P7R-1-350-R18-Z	LUW W5SM-KXKZ-6P7R-Z	LUW CRBP	Q65111A5182	LUW CRBP-LXLZ-G4J4-1-350-R18-ZKW DM	
LUW W5SM	Q65110A7520	LUW W5SM-KXKZ-5P7R-1-350-R18-Z	LUW W5SM-KXKZ-5P7R-Z	LUW CRBP	Q65111A5182	LUW CRBP-LXLZ-G4J4-1-350-R18-ZKW DM	
LUW W5SM	Q65110A7555	LUW W5SM-KXKY-6P7Q-0-350-R18-Z-XX	LUW W5SM-KXKY-6P7Q-Z	LUW CRBP	Q65111A5182	LUW CRBP-LXLZ-G4J4-1-350-R18-ZKW DM	
LUW W5SM	Q65110A9602	LUW W5SM-KXKY-7P7Q-1-350-R18-Z	LUW W5SM-KXKY-7P7Q-Z	LUW CRBP	Q65111A5182	LUW CRBP-LXLZ-G4J4-1-350-R18-ZKW DM	
LUW W5SM	Q65111A0545	LUW W5SM-JZKZ-6P7Q-0-350-R18-Z	LUW W5SM-JZKZ-6P7Q-Z	LUW CRBP	Q65111A5182	LUW CRBP-LXLZ-G4J4-1-350-R18-ZKW DM	
LUW W5SM	Q65111A2290	LUW W5SM-KXKY-6P6Q-1-350-R18-Z	LUW W5SM-KXKY-6P6Q-Z	LUW CRBP	Q65111A5182	LUW CRBP-LXLZ-G4J4-1-350-R18-ZKW DM	
LUW W5SM	Q65111A2586	LUW W5SM-JZKZ-6P7Q-1-R18-Z	LUW W5SM-JZKZ-6P7Q-1	LUW CRBP	Q65111A5182	LUW CRBP-LXLZ-G4J4-1-350-R18-ZKW DM	
LUW W5SM	Q65111A4706	LUW W5SM-KYKZ-7P7Q-1-350-R18-Z	LUW W5SM-KYKZ-7P7Q	LUW CRBP	Q65111A5182	LUW CRBP-LXLZ-G4J4-1-350-R18-ZKW DM	

DISCONTINUED**NEW (REPLACEMENT)**

<i>Product</i>	<i>QNumber</i>	<i>QNumber Description</i>	<i>Part Number</i>	<i>Product</i>	<i>QNumber</i>	<i>QNumber Description</i>	<i>Part Number</i>
LUW W5SM	Q65112A5910	LUW W5SM-KYKZ-5P6R-1-350-R18-Z-XX		LUW CRBP	Q65111A5182	LUW CRBP-LXLZ-G4J4-1-350-R18-ZKW DM	
LW L28G	Q65111A0227	LW L28G-S2T2-3K6L-1-10-R18-Z	LW L28G-S2T2-3K6L-1-Z	KW DELMS1	Q65112A4001	KW DELMS1.RA	
LW L28G	Q65111A1086	LW L28G-S2T2-35K-1-10-R18-Z-XX	LW L28G-S2T2-35K-1-Z-XX	KW DELMS1	Q65112A4001	KW DELMS1.RA	
LW L28G	Q65111A3079	LW L28G-S2T2-4K5L-1-10-R18-Z	LW L28G-S2T2-4K5L-1	KW DELMS1	Q65112A4001	KW DELMS1.RA	
LW L28G	Q65111A3336	LW L28G-S2T2-4K4L-1-10-R18-Z	LW L28G-S2T2-4K4L-Z	KW DELMS1	Q65112A4001	KW DELMS1.RA	
LY L196	Q65111A0700	LY L196-Q2R2-26-0-20-R18-Z	LY L196-Q2R2-26-Z	KY DELMS1.	Q65112A1787	KY DELMS1.22	KY DELLS1.22-R1S2-26-G6N4
LY L196	Q65111A0701	LY L196-P2R1-26-0-20-R18-Z	LY L196-P2R1-26-Z	KY DELMS1.	Q65112A1787	KY DELMS1.22	KY DELLS1.22-R1S2-26-G6N4
LY L196	Q65111A0702	LY L196-Q2R2-35-0-20-R18-Z	LY L196-Q2R2-35-Z	KY DELMS1.	Q65112A1787	KY DELMS1.22	KY DELLS1.22-R1S2-26-G6N4
LY L196	Q65111A0703	LY L196-P1S1-26-0-20-R18-Z	LY L196-P1S1-26-Z	KY DELMS1.	Q65112A1787	KY DELMS1.22	KY DELLS1.22-R1S2-26-G6N4