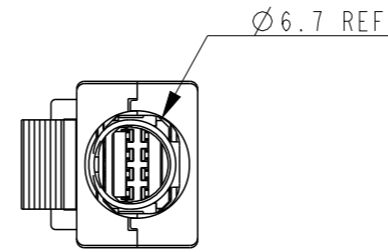
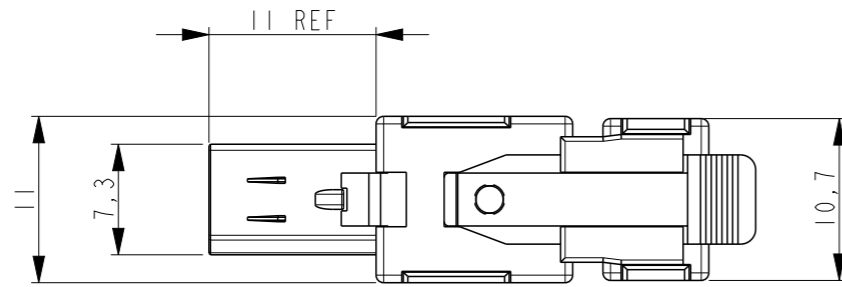
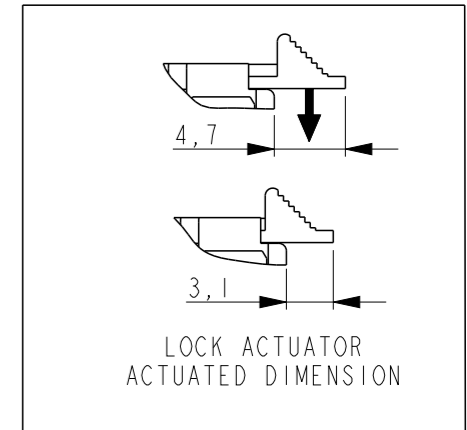


P/N 2069250-1 AS SHOWN:

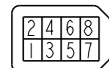
P	LTR	DESCRIPTION	DATE	DWN	APVD
	D	ECR-18-010764	27JUL2018	P.P	P.J
	D1	NOTE 5 ADDED (PROP 65 WARNING)	25AUG2020	SS	JDB
	D2	REMOVED SHEET3; INFO MOVED TO SH.1	17NOV2020	SM	PP
	E	ECR-23-166120 CANCEL PRINTING INK	17APR2023	BP	JDB



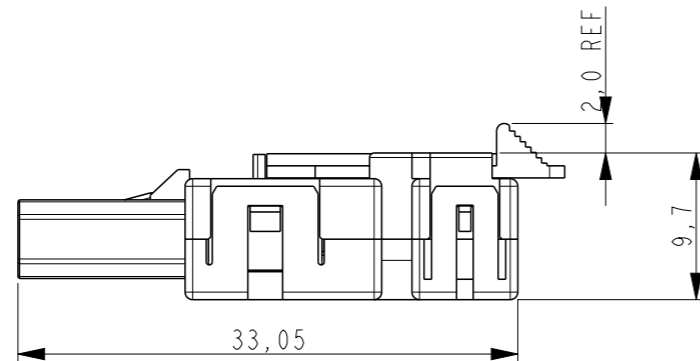
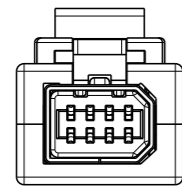
WARNING: This product can expose you to chemicals including **ANTIMONY TRIOXIDE** which is known to the state of California to cause cancer. For more information, visit www.P65Warnings.ca.gov.



D-SHAPE TYPE 1

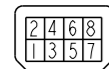


CIRCUIT NO.

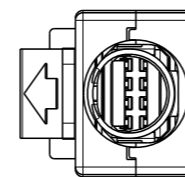
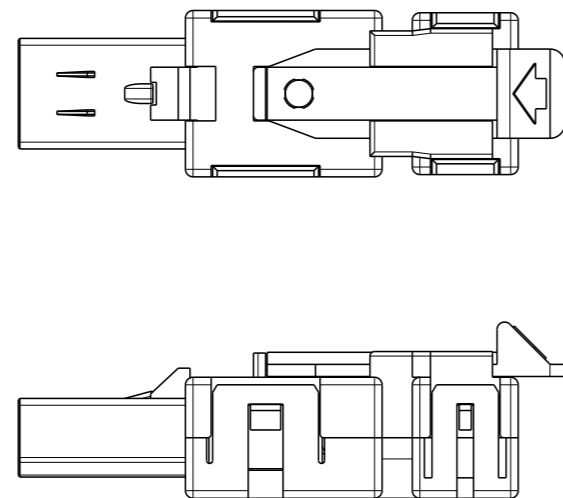
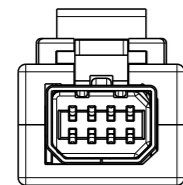


P/N 1-2069250-2 AS SHOWN:

D-SHAPE TYPE 2



CIRCUIT NO.



1. APPLICABLE CABLE RECOMMENDED AWG30~26 X 8C
MAX AWG22 X4C
OVERALL DIAMETER 6.7MAX.
2. DATE CODE IS DESCRIBED ON THE BUNDLED CUSTOMER DRAWING.
3. THE PRODUCT OF THIS DRAWING NO. IS PACKED INDIVIDUALLY IN PACKAGE OF EXCLUSIVE USE.
BEFORE THIS KIT IS PACKED TO TRAY, ITEM 6 SHOULD BE ASSEMBLED TO ITEM 7.
4. MATERIALS:
 - HEAT SHRINKABLE TUBE: CROSS-LINKED POLYOLEFIN
 - COPPER FOIL TAPE: ELECTROLYSIS COPPER FOIL, ACRYLIC ADHESIVE MATERIAL
 - BOTTOM COVER: POLYESTER OF GLASS FILLED THERMO PLASTIC(UL94V-0)
 - TOP COVER,EJECTOR EXT VER.: POLYESTER OF GLASS FILLED THERMO PLASTIC(UL94V-0)
 - PLUG LOCK ACTUATOR: POLYESTER OF GLASS FILLED THERMO PLASTIC(UL94V-0)
 - LOCK EJECTOR EXT VER: POLYESTER OF GLASS FILLED THERMO PLASTIC(UL94V-0)
 - PLUG HSG COVER: POLYESTER OF GLASS FILLED THERMO PLASTIC(UL94V-0)
 - PLUG HSG SUB ASSY:
 - HSG:POLY-AMID OF GLASS FILLED THERMO PLASTIC(UL94V-0)
 - CONTACT PLATING:COPPER ALLOY

UNDER ALL SURFACE: Ni PLATING 1.27µm. MIN.
TOP CONTACT AREA: Au PLATING 0.5µm. MIN.
SOLDERING AREA: Au FLASH

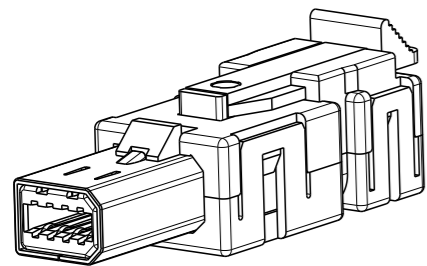
5 PROP 65 WARNING LABEL:

- THE WARNING LABEL ON THE PRODUCT OR LOWEST LEVEL PACKAGING.
- CHEMICAL NAME: ANTIMONY TRIOXIDE

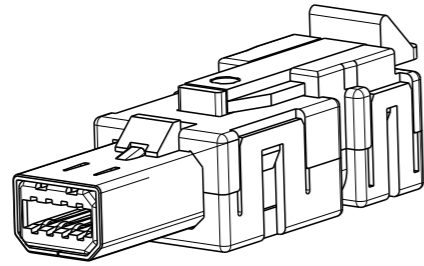
THIS DRAWING IS A CONTROLLED DOCUMENT.		DWN	03DEC2008		TE Connectivity
		CHK	03DEC2008		
		APVD	03DEC2008		
		PRODUCT SPEC	108-78405		
DIMENSIONS: mm		TOLERANCES UNLESS OTHERWISE SPECIFIED: ±0.3		NAME INDUSTRIAL MINI I/O PLUG CONN. KIT TYPE 1 and 2, SOLDER LOCK EJECTOR EXTEND VERSION	
		0 PLC ± 1 PLC ± 2 PLC ± 3 PLC ±0,013 4 PLC ± ANGLES ±		APPLICATION SPEC 114-5431	
MATERIAL SEE TABLE 表参照		FINISH SEE TABLE 表参照		WEIGHT -	
		CUSTOMER DRAWING		SIZE A3	CAGE CODE 00779
				DRAWING NO C-2069250	
				RESTRICTED TO	
				SCALE 2:1	SHEET 1 OF 2
				REV E	

P	LTR	DESCRIPTION	DATE	DWN	APVD
-	-	SEE SHEET 1	-	-	-

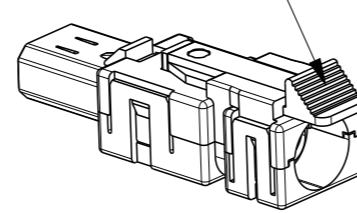
D-SHAPE TYPE 1



D-SHAPE TYPE 2

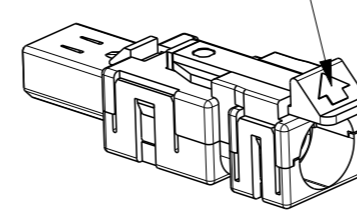


ACTUATOR TYPE A1 or A2

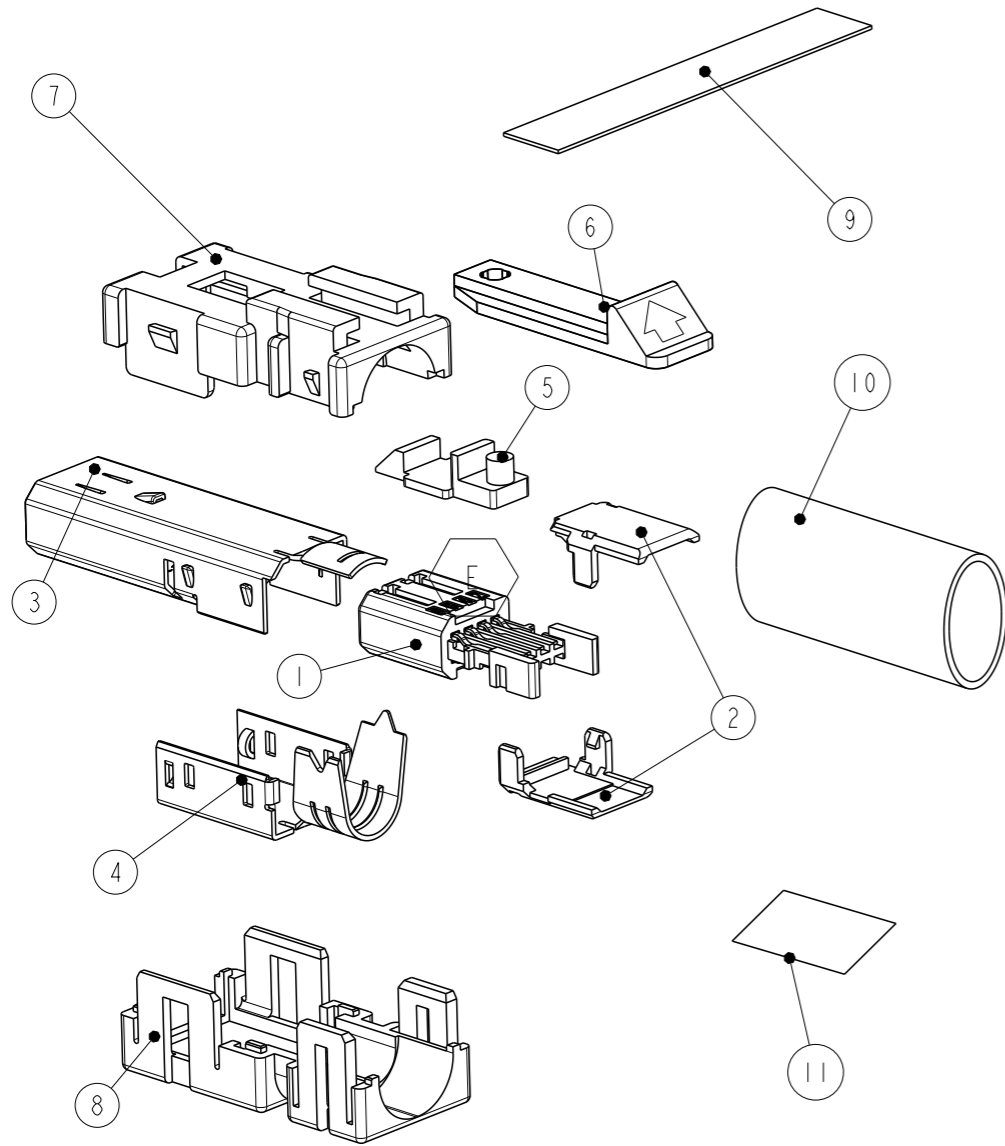


SCALE 3:2

ACTUATOR TYPE B



SCALE 3:2



INACTIVE			INACTIVE	INACTIVE							
TYPE 2	TYPE 1	TYPE 2	TYPE 1	TYPE 2	TYPE 1	PRINTING INK COLOR	ACTUATOR TYPE	MATERIAL COLOR			
									CUSTOMER DRAWING NO. 2069250	11	
									PRINTED ON A4 SIZE		
									HEAT SHRINKABLE TUBE	10	
									COPPER FOIL TAPE	9	
								BLACK	BOTTOM COVER	8	
								BLACK	TOP COVER, EJECTOR EXTENSION VERSION	7	
		-	-	-	-	NO PRINTING	A2	ORANGE	PLUG LOCK ACTUATOR	6	
-	-	-	-	-	-	BLACK	B	ORANGE			
-	-	-	-	-	-	BLACK	A2	ORANGE			
-	-			-	-	NO PRINTING	B	WHITE			
-	-	-	-	-	-	WHITE	B	WHITE			
-	-	-	-	-	-	WHITE	A2	WHITE			
		-	-			NO PRINTING	A1	BLACK	LOCK EJECTOR EXTENSION VERSION	5	
								BLACK	BOTTOM SHELL	4	
	-		-		-				TOP SHELL	3	
-		-		-					PLUG HOUSING COVER	2	
2	2	2	2	2	2				PLUG HOUSING SUB ASSY	1	
-		-		-							
1-2069250-3	2069250-3	1-2069250-2	2069250-2	1-2069250-1	2069250-1				PART NAME		ITEM NO.

THIS DRAWING IS A CONTROLLED DOCUMENT.

DIMENSIONS: mm	TOLERANCES UNLESS OTHERWISE SPECIFIED: 0-PLC ± 1-PLC ± 2-PLC ± 3-PLC ±0,013 4-PLC ± ANGLES ± FINISH
MATERIAL	

DWN	S. INOMATA	03DEC2008
CHK	A. OOISHI	03DEC2008
APVD	A. OOISHI	03DEC2008
PRODUCT SPEC	108-78405	
APPLICATION SPEC	114-5431	
WEIGHT	-	
CUSTOMER DRAWING		

TE TE Connectivity

NAME: INDUSTRIAL MINI I/O
PLUG CONN. KIT TYPE 1 and 2,
SOLDER LOCK EJECTOR EXTEND VERSION

SIZE	CAGE CODE	DRAWING NO	RESTRICTED TO
A3	00779	C-2069250	

SCALE 2:1 SHEET 2 OF 2 REV E