

REVISIONS				
P	LTN	DESCRIPTION	DATE	APVD
B		REVISED PER ECR-20-100642	23SEP2022	M, G, D, Z

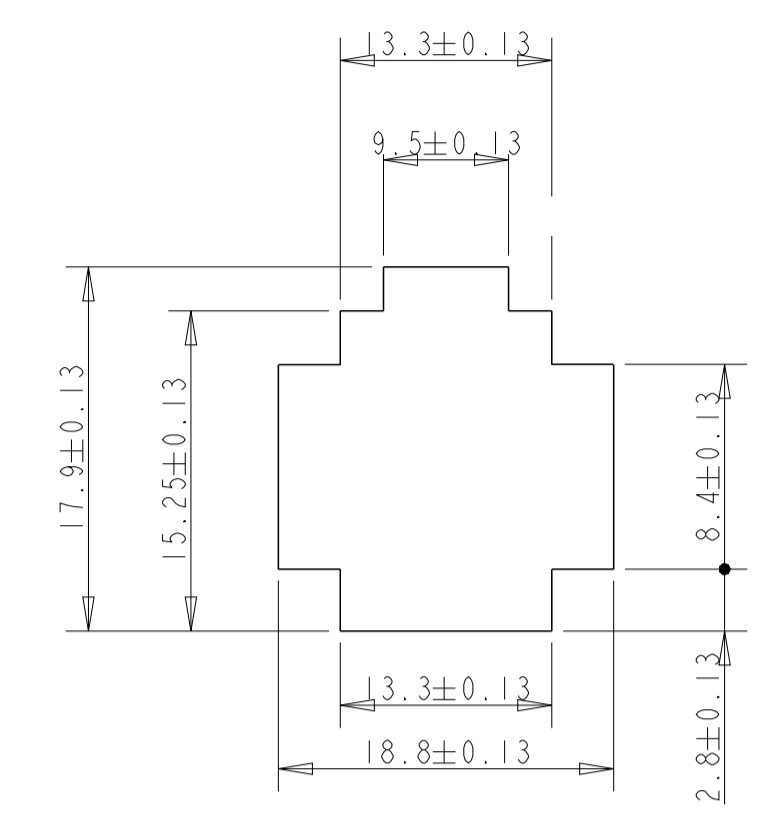
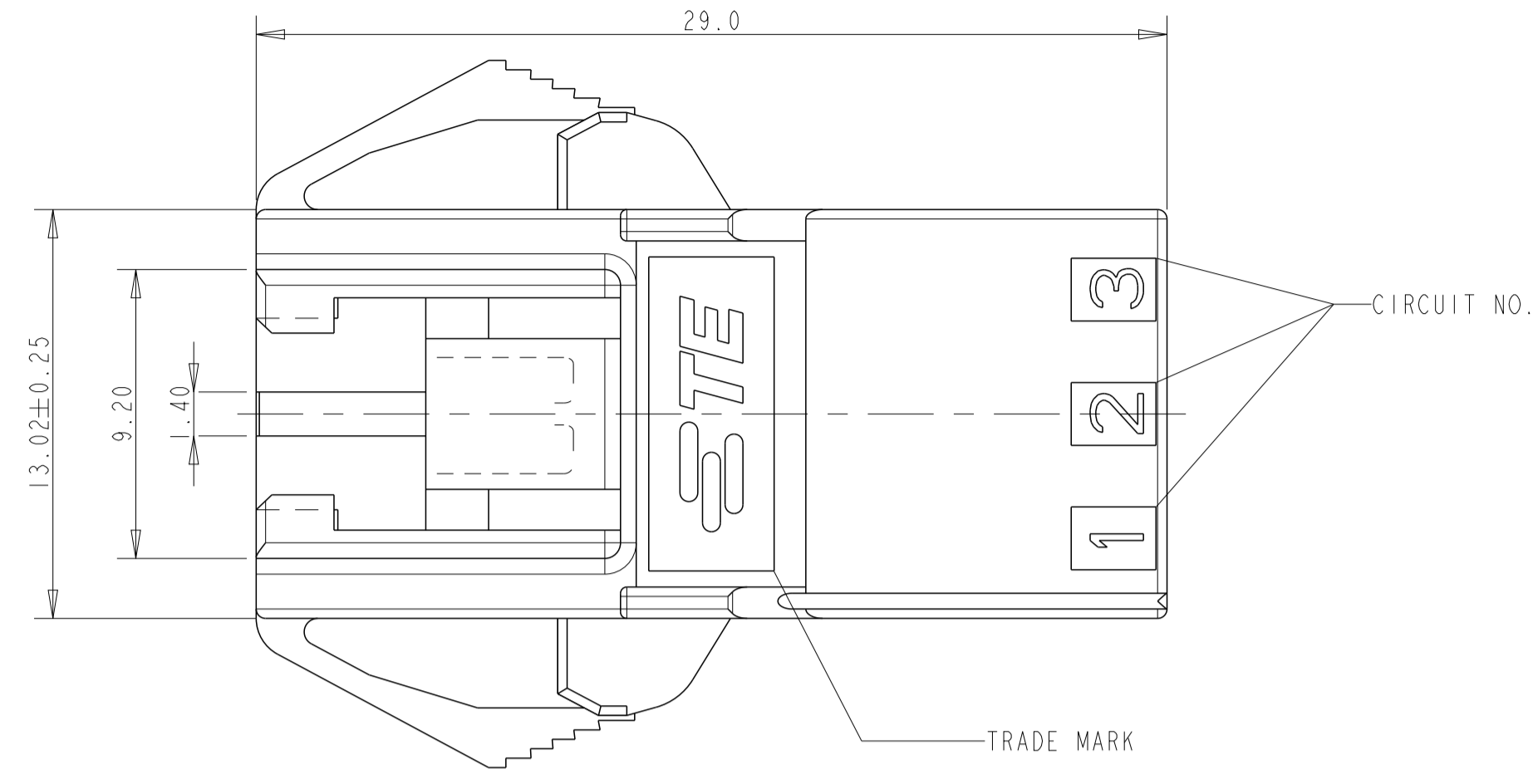
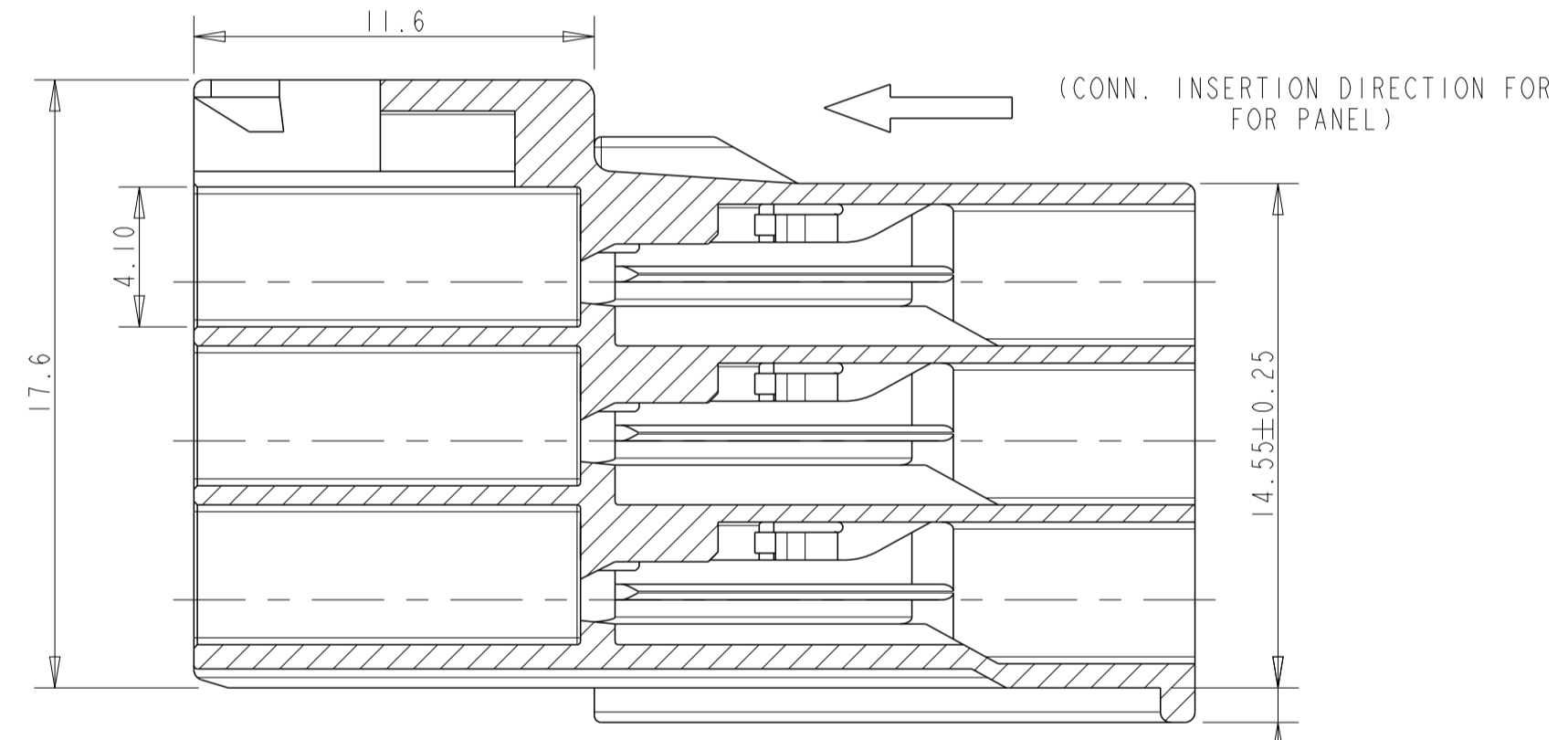
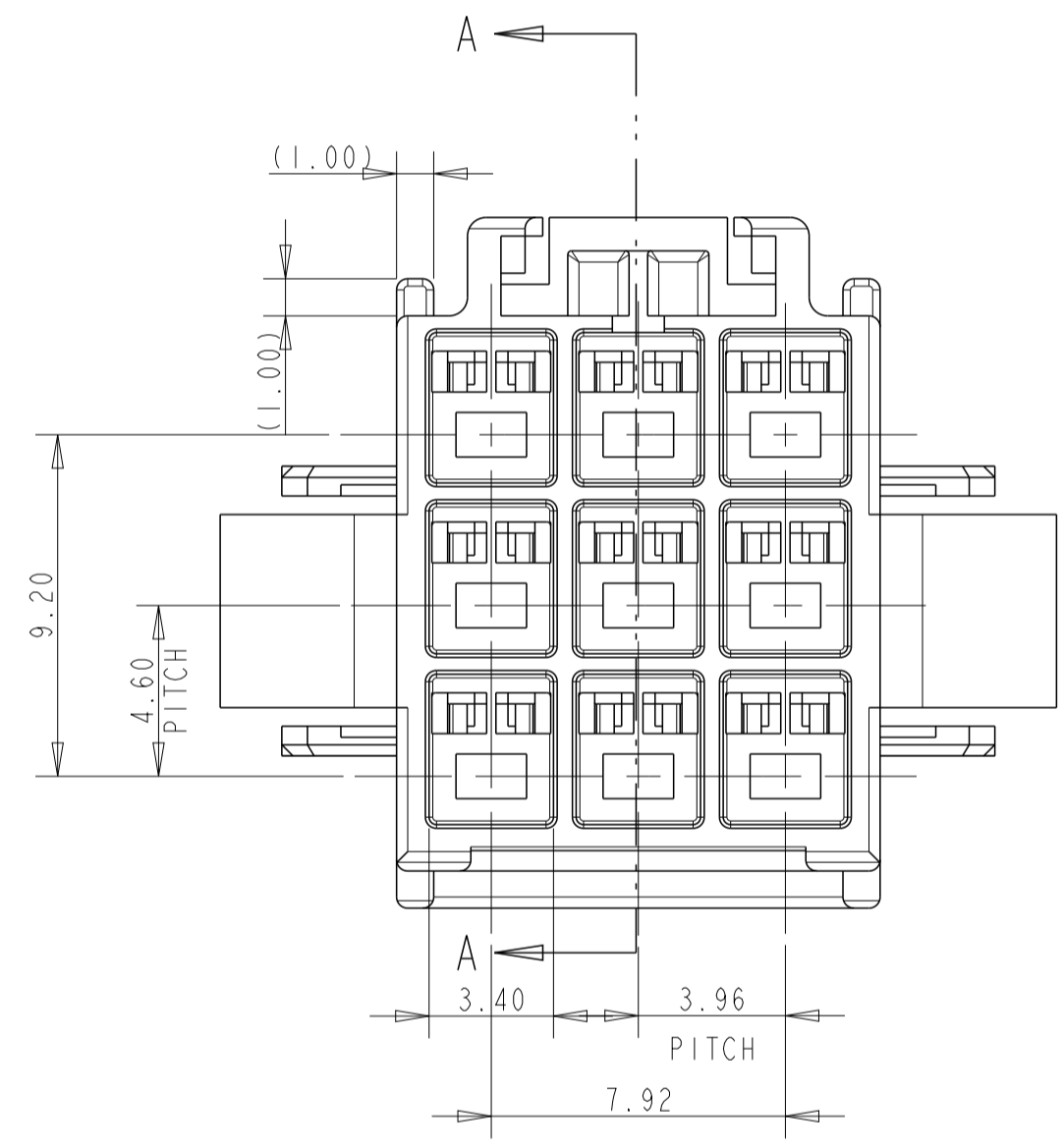
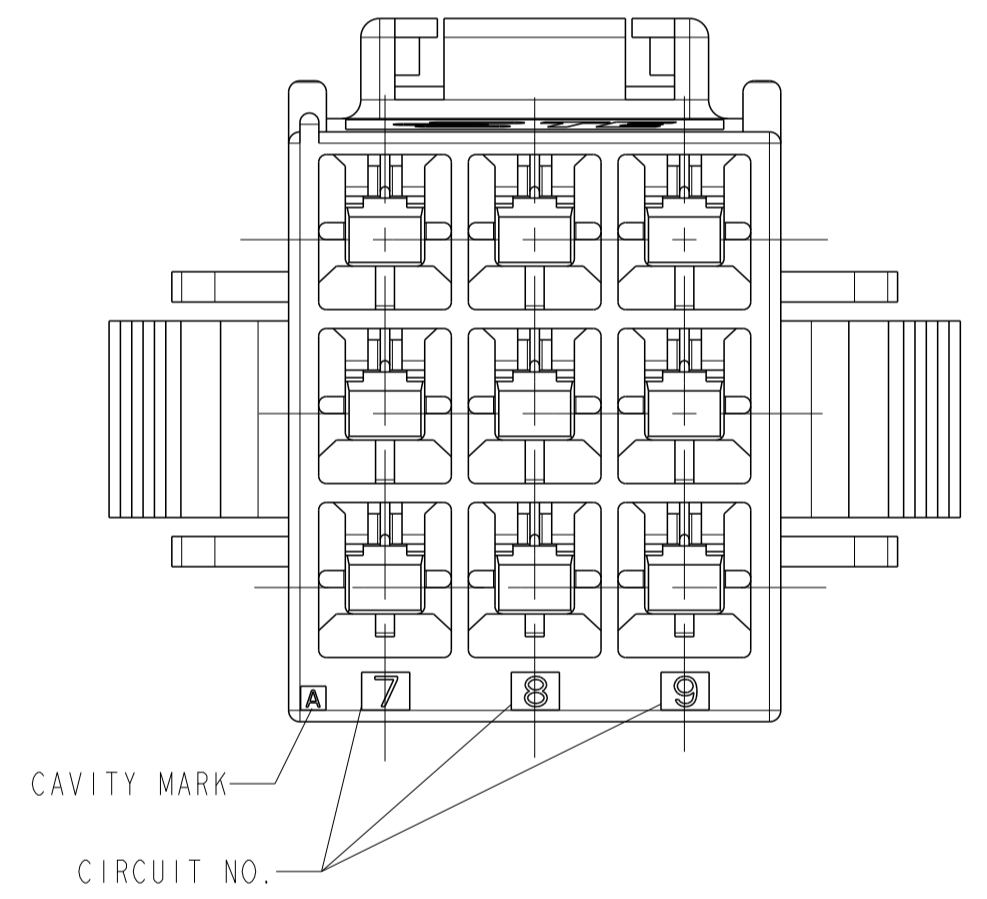


FIG 1
(RECOMMENDED PANEL OPENING DIMENSION)

- NOTES:
- 1 APPLICABLE CONTACT P/N:
TAB CONTACT: 175150- (20-16 AWG)
175149- (26-22 AWG)
 - 2 MATING CONN. P/N:
PLUG HSG: 176276-
REC HSG: 175152- (20-16 AWG)
175151- (26-22 AWG)
 - 3 INSTRUCTION SHEET: IS-503J.
 - 4 APPLICABLE PANEL THICKNESS : 0.8-2.0 (SEE FIG 1)
 - 5 INSERT CONN. FROM PRESS DIRECTION SIDE FOR METAL PANEL.
 - 6 EDGE OF THICKNESS WAY MUST NOT ROUND FOR MOLDED PANEL.



SECTION A-A



DISCONTINUED	-BLACK	9	176297-9
DISCONTINUED	-BLUE	9	176297-6
DISCONTINUED	-YELLOW	9	176297-4
DISCONTINUED	-RED	9	176297-2
	NATURAL	9	176297-1
	HOUSING COLOR	POSITION	PART NUMBER

THIS DRAWING IS A CONTROLLED DOCUMENT.		DWN Y. NARISAWA 12APR1990	TE Connectivity
DIMENSIONS: mm		CHK Y. FUJITA 19NOV1990	
TOLERANCES UNLESS OTHERWISE SPECIFIED:		APVD N. ONOUE 20NOV1990	NAME AMP UNIVERSAL POWER CONN, 3.96MM PITCH CAP HOUSING 9 POS (PANEL MOUNT)
0 PLC ±0.25		PRODUCT SPEC 108-5302	
1 PLC ±0.2		APPLICATION SPEC 114-5142	SIZE CAGE CODE DRAWING NO RESTRICTED TO A 00779 C=176297
2 PLC ±0.2		WEIGHT	
3 PLC ±0.2		CUSTOMER DRAWING	SCALE 5:1 SHEET 1 OF 1 REV B
4 PLC ±0.2			
ANGLES ±°			
FINISH			
MATERIAL 6/6 NYLON (UL94 V-0)			