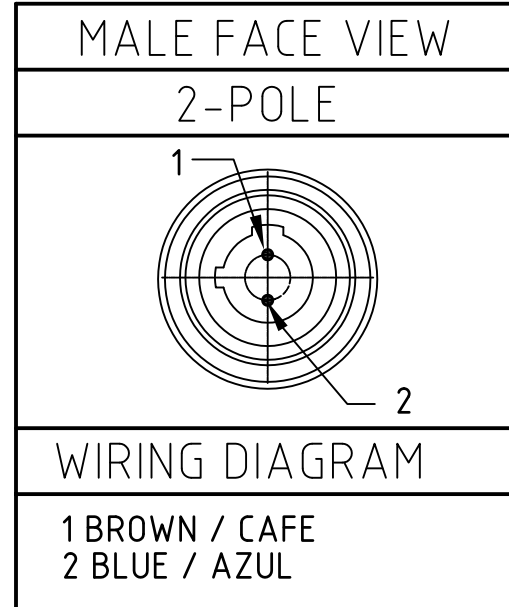


POL	MATERIAL NUMBER	ENGINEERING NUMBER	FINISHED LENGTH
2	1200720108	702006D02F060	6.00' +3.50" -0 [1.8M +88.9 -0]

CONNECTOR SPECIFICATION:

VOLTAGE RATING	250 VAC/VDC
AMPERAGE RATING	max. 4 AMPS
PROTECTION	IP67
OPERATING TEMPERATURE	-20°C TO 105°C
UL CERTIFICATIONS	UL LISTED, FILE NO. E152210
CSA CERTIFICATIONS	CSA CERTIFIED, FILE NO. LR6837



ITEM	COMPONENT	MATERIAL	FINISH
6	LABLE	MYLAR	BLACK/YELLOW
5	COUPLER	ZINC DIE CAST/ BRASS	BLACK E-COATED/ NICKEL PLATED
4	PIN CONTACT	COPPER ALLOY	GOLD OVER NICKEL
3	INSERT	NYLON	BLACK
2	OVERMOLD	PVC	YELLOW
1	CABLE- 22 AWG (26x#36 COPPER STRANDING) 2 CONDUCTOR BRAID SHIELD 300V	PVC	YELLOW

DESCRIPTION EC NO: WEU2010-0417 DRWN: LSTEMMLE CH'KD: NS APPR: FPACHER 08.03.10 2010/03/10	QUALITY SYMBOLS $\nabla = 0$ $\triangle = 0$	GENERAL TOLERANCES (UNLESS SPECIFIED)	DIMENSION STYLE IN/MM	SCALE 2:1	DESIGN UNITS METRIC	THIRD ANGLE PROJECTION																														
	DRAFT WHERE APPLICABLE MUST REMAIN WITHIN DIMENSIONS	<table border="1"> <thead> <tr> <th></th> <th>mm</th> <th>INCH</th> </tr> </thead> <tbody> <tr> <td>4 PLACES</td> <td>\pm---</td> <td>\pm---</td> </tr> <tr> <td>3 PLACES</td> <td>\pm---</td> <td>\pm---</td> </tr> <tr> <td>2 PLACES</td> <td>\pm---</td> <td>\pm.01</td> </tr> <tr> <td>1 PLACE</td> <td>\pm0.3</td> <td>\pm---</td> </tr> <tr> <td colspan="3">ANGULAR \pm --- °</td> </tr> </tbody> </table>		mm	INCH	4 PLACES	\pm ---	\pm ---	3 PLACES	\pm ---	\pm ---	2 PLACES	\pm ---	\pm .01	1 PLACE	\pm 0.3	\pm ---	ANGULAR \pm --- °			<table border="1"> <thead> <tr> <th>DRAWN BY</th> <th>DATE</th> </tr> </thead> <tbody> <tr> <td>LSTEMMLE</td> <td>2010/02/08</td> </tr> <tr> <th>CHECKED BY</th> <th>DATE</th> </tr> <tr> <td>FP</td> <td>2010/03/09</td> </tr> <tr> <th>APPROVED BY</th> <th>DATE</th> </tr> <tr> <td>FPACHER</td> <td>2010/03/09</td> </tr> </tbody> </table>	DRAWN BY	DATE	LSTEMMLE	2010/02/08	CHECKED BY	DATE	FP	2010/03/09	APPROVED BY	DATE	FPACHER	2010/03/09	MICRO-CHANGE CORDSET 2-P DUAL KEYWAY MA STR BRAID SHIELD PVC CABLE		MOLEX INCORPORATED
	mm	INCH																																		
4 PLACES	\pm ---	\pm ---																																		
3 PLACES	\pm ---	\pm ---																																		
2 PLACES	\pm ---	\pm .01																																		
1 PLACE	\pm 0.3	\pm ---																																		
ANGULAR \pm --- °																																				
DRAWN BY	DATE																																			
LSTEMMLE	2010/02/08																																			
CHECKED BY	DATE																																			
FP	2010/03/09																																			
APPROVED BY	DATE																																			
FPACHER	2010/03/09																																			
SIZE A3	MATERIAL NO. 1200720108	DOCUMENT NO. SD-120072-014	SHEET NO. 1 OF 1																																	
THIS DRAWING CONTAINS INFORMATION THAT IS PROPRIETARY TO MOLEX INCORPORATED AND SHOULD NOT BE USED WITHOUT WRITTEN PERMISSION																																				