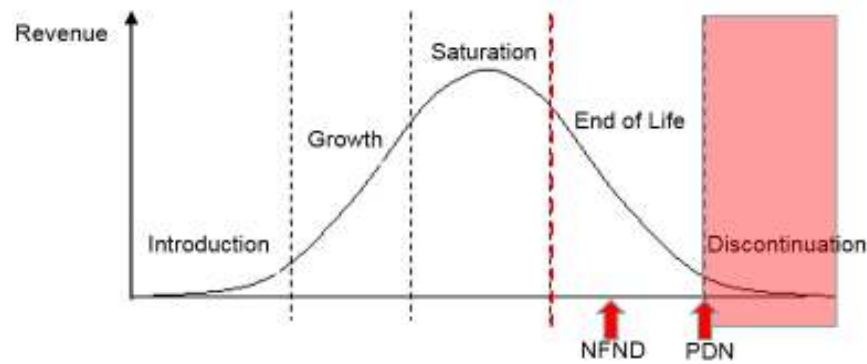


Light is OSRAM

Product Discontinuation (acc. JEDEC J-STD-048) OS-PD-2017-065

2-Oct-2017

Last order:	no LTB
Last delivery:	
Reason:	Shift of binning due to increased radiant intensity according to OS-PCN-2015-025-A



Please direct your feedback to your local Sales office.

DISCONTINUED				NEW (REPLACEMENT)			
Device	Ordering Code	Function	Brand	Device	Datasheet Ordering Code	Function	Brand
SFH 4250S-S	Q65111A9686	Emitter	Power TOPLED				

Products Affected by Product Discontinuation Notification

Number: OS-PD-2017-065

Name: Shift of binning due to increased radiant intensity according to OS-PCN-2015-025-A

Release Date: 10/2/2017

Last Order: 10/2/2017

Last Delivery: 10/2/2017

DISCONTINUED

NEW (REPLACEMENT)

<i>Product</i>	<i>QNumber</i>	<i>QNumber Description</i>	<i>Part Number</i>	<i>Product</i>	<i>QNumber</i>	<i>QNumber Description</i>	<i>Part Number</i>
SFH 4250S	Q65111A9686	SFH 4250S-S	SFH 4250S-S				