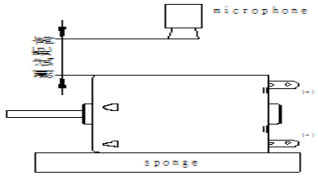


Quality Control Standard

出货品质标准

Valued customer 客户名称 :	Customer Product Name/No. (客户产品名称/编号):	打印机	
Model No 机种编号 :	Swatch No.: 样品编号	Date作成日: 2023/1/9	Rev.
Our Code No. 仕样编号 :	(Please Use Our Code No. To Order) (订货时请用此仕样编号)	Rev. Date修订日:	
RS455-ST-18125	EOA231-0012		
RS455-ST-00006V		备注	DV ROHS
陈礼云2023.01.13			

1. Conditions of Standard Operation / 工作条件

1- 1)Driving Voltage 驱动电压	: 18 V	DC Constant between motor terminals. 马达端子电压 18 V 直流恒压。
1- 2)Direction of Rotation 回转方向	: CCW	viewing from metal housing. CCW 面对马达金属外壳时。
1- 3)Position of Motor 马达放置状态	: To be placed horizontally when measuring. 测试时水平放置。	
1- 4)Operating Temperature工作温度	: -10 °C to 60 °C	噪音测试示意图  P4: 垂(垂直侧面)
1- 5)Operating Humidity工作湿度	: 30%RH to 95%RH	

2. Conditions of Standard Test / 测试条件

2- 1)Testing Temperature测试温度	: 10°C to 30°C	
2- 2)Testing Humidity测试湿度	: 30%RH to 95%RH	

3. Initial Eletrical Characteristics / 初期特性

3- 1) No Load Speed 无负荷转速	: 3900 ± 580 rpm	: 3900 ± 580 转/分
3- 2) No Load Current 无负荷电流	: 110 mA max.	: 最大 110 毫安培
3- 3) Stall Torque 堵转扭力	At Load 8.0 & 32.0 mNm	: 59 mNm min. : 最小 59 mNm
3- 4) Stall Current 堵转电流	在负载点 8.0 & 32.0 mNm	: 2500 mA max. : 最大 2500 毫安培
3- 5) Mechanical Noise(vertical from housing side) 30 cm Background noise 30dB Max) 机械噪音(垂直于铁壳侧 30 cm, 环境噪音30dB Max)	: 60	dB Or below(RMS)JIS-A Characteristics dB 以下(RMS)JIS-A特性
3- 6) Reference Performance Curve 参考性能曲线	: As per attached Sheet	<u>RS455-ST-18125</u> : 所附图表为 <u>RS455-ST-18125</u>
3- 7) Dimensions 外形尺寸	: As per Drawing attached	<u>WG- R455T-Y41</u> : 所附图面为 <u>WG- R455T-Y41</u>
3- 8) End play of Shaft 虚位	: 0.03 ~ 0.50 mm	: 0.03 ~ 0.50 毫米

For & on behalf of Customer

For & on behalf of Standard Motor Co., Ltd.

Jack Lee 2023/01/12



As a reminder, the specification should be signed and returned within two weeks, or it will be considered as acceptable by the customer. 如果客户两周内不签字确认并返回, 将被视为已认可此规格。

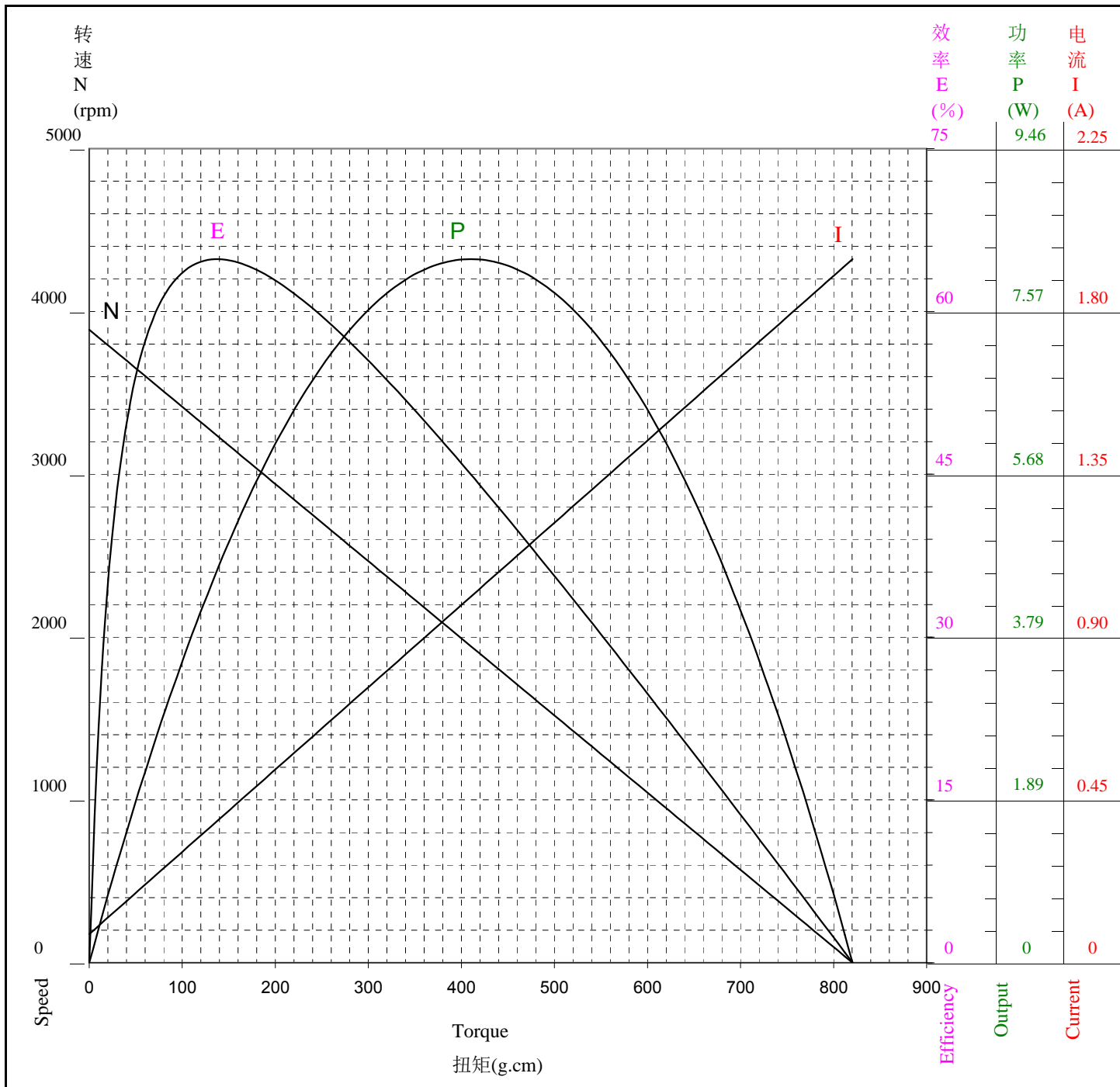
性能表只供参考
马达实际参数请以马达出货标准为主



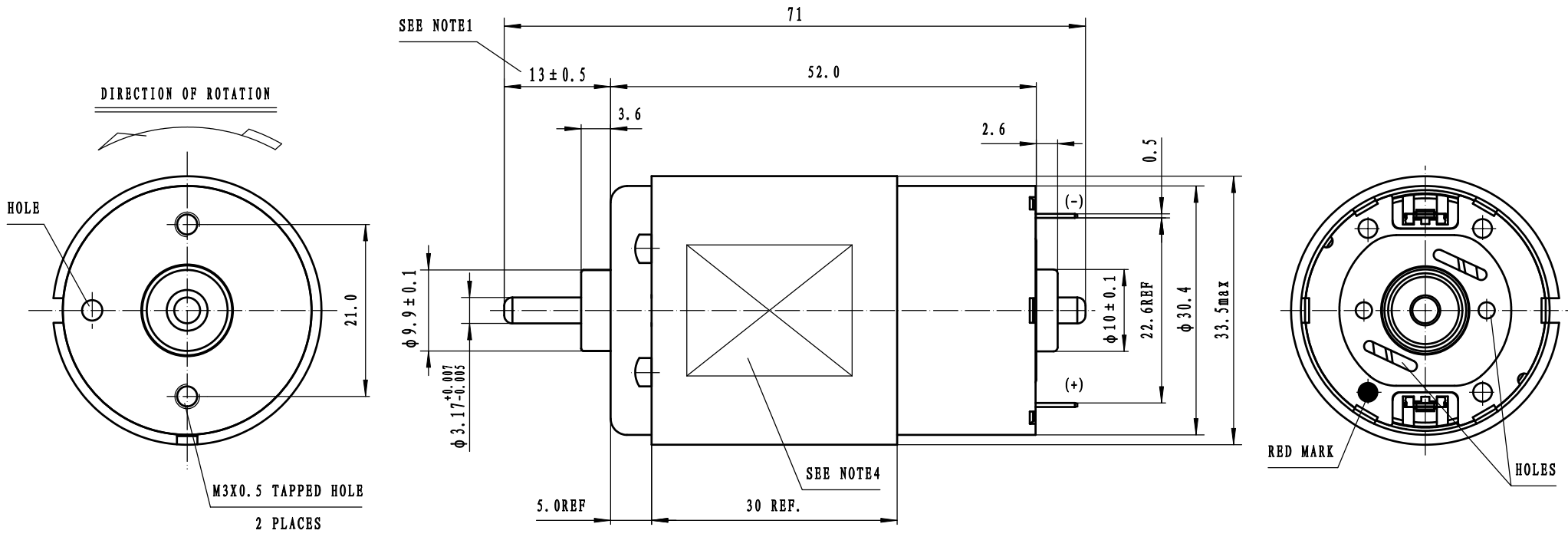
STANDARDMOTOR 標準微型摩打有限公司

两点法: 81.6 g.cm & 326.3 g.cm

Model/Winding 型号/卷线	Voltage 电压 V	No Load 无负荷		At Maximum Efficiency 最大效率点				At Maximum Output 最大功率点				Stall 停止	
		Current 电流 A	Speed 转速 rpm	Current 电流 A	Speed 转速 rpm	Torque 扭矩 g.cm	Efficiency 效率 %	Current 电流 A	Speed 转速 rpm	Torque 扭矩 g.cm	Output 功率 W	Current 电流 A	Torque 扭矩 g.cm
RS455-ST-18125	18.0	0.079	3888	0.392	3235	137.7	64.8	1.010	1944	410.2	8.18	1.942	820.4



MARK	POSITION	DESCRIPTION	DATE	BY



NOTES(备注):

1. THIS DIM APPLIES ONLY WHEN MOTOR SHAFT IS IN EXTREME LEFT POSITION

该尺寸适用于将轴压于左侧时

2. SHAFT END PLAY 0.03 ~ 0.5mm

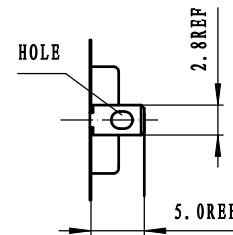
马达虚位(轴向串动) 0.03 ~ 0.5mm

3. USABLE MACHINE SCREW LENGTH 4.0mm MAX. FROM MOTOR MOUNTING SURFACE

从大壳外端面开始, 可用机器螺钉长度 4.0mm MAX

4. SPECIFIED CONTENT WILL BE TYPEGRAPHICALED IN CONFORMITY TO GETUP BOOK OF MOTOR

按马达仕様书印刷指定内容



Characteristic	DWN. BY	Sammy	DWN. DATE	22.12.20	TITLE	Motor Outline Drawing		
Cpk > 1.33	CHK. BY		CHK. DATE		DWG. No.	WG-R455T-Y41		
Quality control	APP. BY		APP. DATE		Undeclared tolerance	± 0.3	Angle tolerance	± 3°
Not mark	Not required	SD STANDARD MOTOR CO.,LTD.			SCALE	2:1	Rev.	- A3