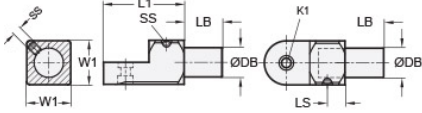




MT20-CSSWS-AN


Ruland Set Screw Swivel Clamp Joint With Stud, Swivel Thru Hole 6.5mm, Stud Diameter 20mm, Stud Length 26mm, L 81mm, Black Anodized Aluminum



Description

Ruland MT20-CSSWS-AN is a swivel clamp joint with stud with 20mm stud diameter, 26mm stud length, M6 set screw, 15mm base height, 30mm width and height, and 55mm overall length. It is designed to fit with MT20 swivel clamp bases, MT20 clamp connectors and mounting blocks, and MT20 round tubes. When combined with a swivel bases or attachment clamp joints, it is an ideal articulating mounting solution for screens, sensors, reflectors, plexiglass machine guards, and other components that require frequent adjustments. The stud allows for a more compact installation than other connectors which require the use of a second tube that is significantly longer than the stud. An MT20-ALK-M6-30 adjustable clamping handle can be used to join it to other Ruland swivel components for rapid repositioning without the use of tools. This part is aluminum with a black anodized finish for added corrosion resistance when compared to unplated types. MT20-CSSWS-AN is manufactured by Otto Ganter, inventoried by Ruland, and RoHS3 compliant.

Product Specifications

Bolt Diameter DB	20 mm	Bolt Length LB	26 mm
Counterbore 1 Diameter K1	10 mm	Counterbore 2 Diameter K2	6.5 mm
Overall Length L1	55 mm	Hub Length LH	24 mm
Edge To Center L2	40 mm	Base Height H1	15 mm
Width & Height W1	30 mm	Hole Depth T	18 mm
Set Screw SS	M6	Screw To Edge LS	12 mm
Material Specification	Anodized Aluminum	Manufacturer	JW Winco/ Otto Ganter
Country of Origin	Germany	Weight (lbs)	0.397700
UPC	634529230206	Tariff Code	7609.00.0000
UNSPC	31162908		
Note 1	Performance ratings are for guidance only. The user must determine suitability for a particular application.		
Prop 65	 WARNING This product can expose you to the chemical Nickel (metallic), known to the State of California to cause cancer. For more information go to www.P65Warnings.ca.gov .		