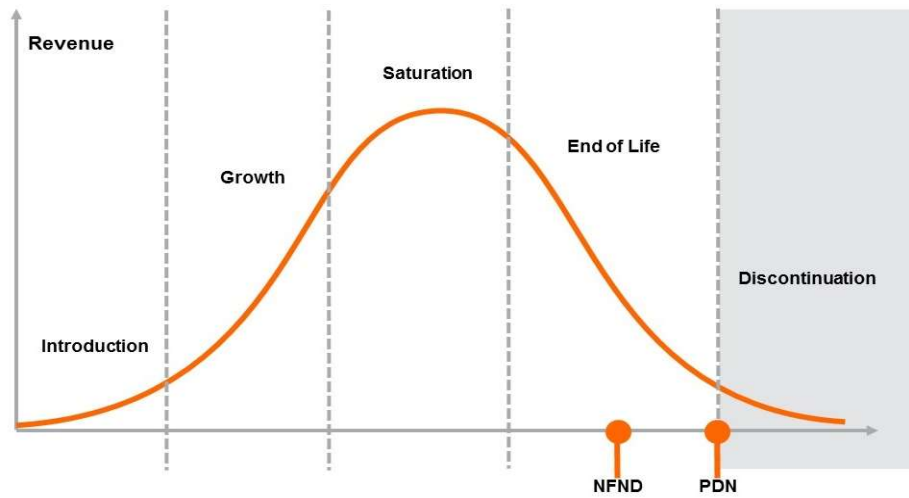


Product Or Individual Q-Code Discontinuation (acc. JEDEC J-STD-048) OS-PDN-2022-083

01 November 2022

Last order: 01 May 2023

Last delivery: 01 November 2023



Please direct your feedback to your local Sales office.

DISCONTINUED				NEW (REPLACEMENT)		
Device	Ordering Code	Brand	Reason for discontinuation	Device	Datasheet Ordering Code	Brand
LW L283	all					
LW L283-P2R1-3K8L-1-10-R18-Z	Q65110A1550	SMARTLED	SiC: forced phase out by supplier PDN	LW Q98G.01-R2T1-3K6L-1-5-R18	Q65113A5253	Chip LED
LW L283-P2R1-5K6L-1-10-R18-Z	Q65110A1903	SMARTLED	SiC: forced phase out by supplier PDN	LW Q98G.01-R2T1-3K6L-1-5-R18	Q65113A5253	Chip LED
LW L283-Q1R1-56L-1-10-R18-Z-XX	Q65113A2881	SMARTLED	SiC: forced phase out by supplier PDN	LW Q98G.01-R2T1-3K6L-1-5-R18	Q65113A5253	Chip LED
LW L283-Q1R2-3K8L-1-10-R18-Z	Q65110A1647	SMARTLED	SiC: forced phase out by supplier PDN	LW Q98G.01-R2T1-3K6L-1-5-R18	Q65113A5253	Chip LED
LW L283-Q2R1-6K6L-1-10-R18-Z	Q65111A0167	SMARTLED	SiC: forced phase out by supplier PDN	LW Q98G.01-R2T1-3K6L-1-5-R18	Q65113A5253	Chip LED
LW L283-Q2R2-56L-1-10-R18-Z-XX	Q65111A4229	SMARTLED	SiC: forced phase out by supplier PDN	LW Q98G.01-R2T1-3K6L-1-5-R18	Q65113A5253	Chip LED
LW L283-Q2R2-5K6L-1-10-R18-Z-B	Q65110A9142	SMARTLED	SiC: forced phase out by supplier PDN	LW Q98G.01-R2T1-3K6L-1-5-R18	Q65113A5253	Chip LED
LT L29S	all					
LT L29S-N1R2-25-0-10-R18-Z	Q65110A3218	SMARTLED	SiC: forced phase out by supplier PDN	LT Q99G.01-R2T1-25-1-5-R18	Q65113A5257	Chip LED
LT L29S-N1R2-25-0-10-R18-Z	Q65112A9879	SMARTLED	SiC: forced phase out by supplier PDN	LT Q99G.01-R2T1-25-1-5-R18	Q65113A5257	Chip LED
LT L29S-N2Q1-25-0-10-R18-Z	Q65110A3219	SMARTLED	SiC: forced phase out by supplier PDN	LT Q99G.01-R2T1-25-1-5-R18	Q65113A5257	Chip LED
LT L29S-N2Q1-25-0-10-R18-Z	Q65112A9878	SMARTLED	SiC: forced phase out by supplier PDN	LT Q99G.01-R2T1-25-1-5-R18	Q65113A5257	Chip LED
LT L29S-P2R1-25-0-10-R18-XX	Q65112A4968	SMARTLED	SiC: forced phase out by supplier PDN	LT Q99G.01-R2T1-25-1-5-R18	Q65113A5257	Chip LED
LT L29S-P2R1-25-0-10-R18-Z	Q65112A9877	SMARTLED	SiC: forced phase out by supplier PDN	LT Q99G.01-R2T1-25-1-5-R18	Q65113A5257	Chip LED
LT L29S-Q1R1-35-0-10-R18-Z	Q65110A9946	SMARTLED	SiC: forced phase out by supplier PDN	LT Q99G.01-R2T1-25-1-5-R18	Q65113A5257	Chip LED
LB L293	all					
LB L293-L2N1-25-1-10-R18-Z	Q65110A1788	SMARTLED	SiC: forced phase out by supplier PDN	LB Q99G.01-P1R1-35-1-5-R18	Q65113A5255	Chip LED
LB L293-M2P1-36-1-10-R18-Z	Q65110A1791	SMARTLED	SiC: forced phase out by supplier PDN	LB Q99G.01-P1R1-35-1-5-R18	Q65113A5255	Chip LED