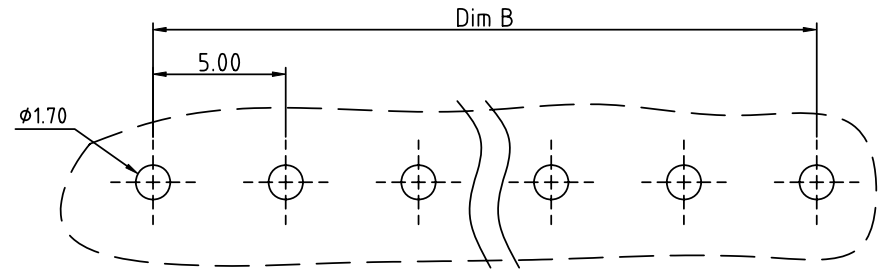
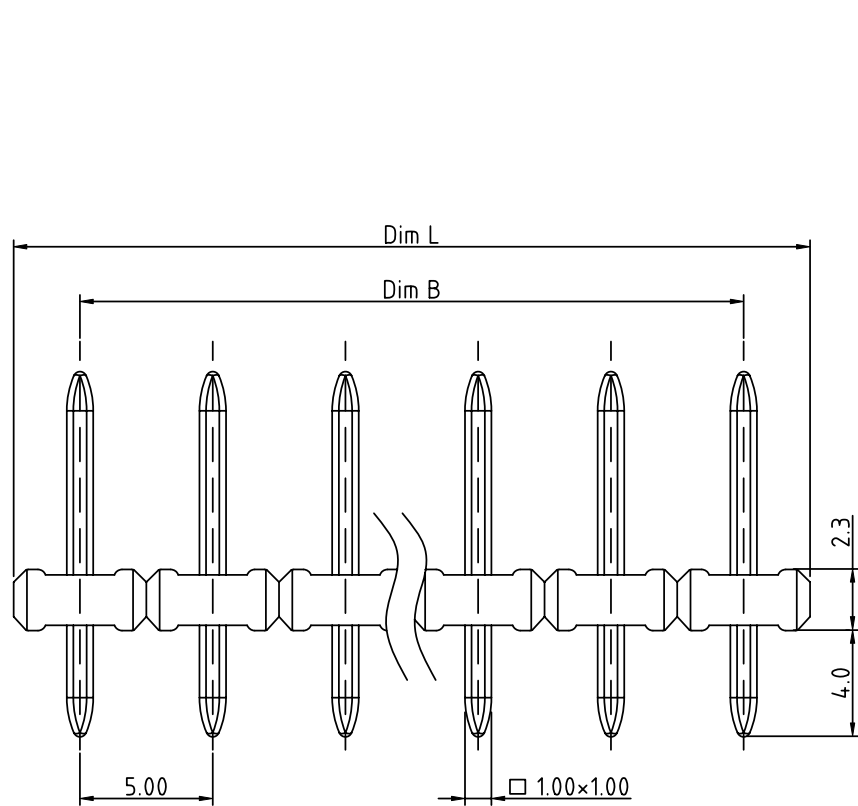
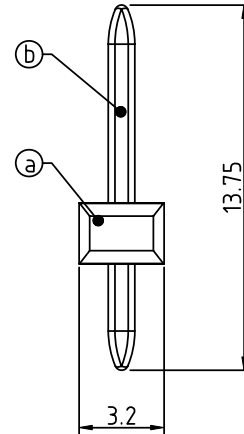


PRODUCT NUMBER	PITCH
EPxx000000JOG	5.00 mm



RECOMMENDED P.C.B LAYOUT
TOP VIEW



Material:

- Item (a) Terminal body: Thermoplastic Black Color UL94V-0
- Item (b) Pin : Brass , Tin plated

Electrical:

- Voltage rating: 300V
- Current rating: 15A
- Withstanding Voltage: 1.6KV
- Operating temperature: -40°C to +115°C
- Soldering temperature: 260°C±5°C/5 Sec
- Safety Approval: us

N=NUMBER OF POLES

Dim L=N×5.00
Dim B=(N-1)×5.00

POLES	Tolerance
2P-5P	±0.10
6P-10P	±0.15
11P-15P	±0.20
16P-20P	±0.25
21P-24P	±0.30

PART NO.: EP xx 0 0 0 0 00J0 G

Solid block
No. of poles
02 2 poles
03 3 poles
... ..
24 24 poles

RoHS compliant
(lead<4%)
In copper Alloy

mat'l. code		surface ASME Y14.5 ✓	tolerance ASME Y14.5	projection 	product family TERMINAL BLOCK
ltr	ecn no	dr	date	tolerances unless otherwise specified	title TERMINAL BLOCK PLUGGABLE SOCKET, VERTICAL
				angles X°±1°	
				scale MM	dwg no EPxx000000JOG
		dr	EVIN ZHONG	041714	sheet 1 of 1
		enr	EVIN ZHONG	041714	size A4
		chr	HANKE FENG	041714	type CUSTOMER Drawing
		appd	SHI JUN	041714	
sheet index	revision	A			
	sheet	1			