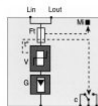


15617.2

CP DS 250 VG

CP DS 250 VG



Combined overvoltage arrester type 1|2|3 with high-performance varistor and gas discharge tube, no leakage current, Mounting type: Mounting rail TS 35, 1-channel, Rated voltage: 230 VAC

Business data

Abez 3 - product description	Overvoltage arresters
Packaging unit	1
Quantity unit	PC
Weight per piece (not including packaging)	265
Weight per piece (including packaging)	305.6
Unit of weight	G
Customs number	85354000
Country of origin	FR

15617.2

CP DS 250 VG

CP DS 250 VG

Technical Data

Dimensions

Length	90 mm
Width	36 mm
Height	68.4 mm
Installation dimensions acc. to DIN 43880	2 Te

Ratings

Rated voltage Un	230 / 400
Rated discharge surge current In (8/20) μ s	30 kA
Rated frequency max.	100 Hz
Short-circuit resistance Ip	25 kA

Connection data

Connection principle	Screw connection
Wire cross-section single core (rigid), min.	6 mm ²
Wire cross-section single-core (rigid), max.	35 mm ²
Wire cross-section stranded, min.	6 mm ²
Wire cross-section stranded, max.	35 mm ²
Wire cross-section stranded with wire-end ferrules, min.	35 mm ²

15617.2

CP DS 250 VG

CP DS 250 VG

Technical Data

Connection data

Wire cross-section stranded with wire-end ferrules, max.	6 mm ²
--	-------------------

Output data

Switching current, max. at 125 V DC	2 A
-------------------------------------	-----

Switching current, max. at 250 V AC	0,5 A
-------------------------------------	-------

Remote signalling	Potential-free CO contact
-------------------	---------------------------

Remote signalling: Wire cross-section single-core (rigid), max.	1,5 mm ²
---	---------------------

Materials

Insulation housing	Thermoplastic PEI
--------------------	-------------------

Flammability class UL 94	V-0
--------------------------	-----

Working temperature, min.	-40 °C
---------------------------	--------

Working temperature, max.	85 °C
---------------------------	-------

15617.2

CP DS 250 VG

CP DS 250 VG

Technical Data

Further technical data

Protection class	IP20
Response time t_A	<20 ns
Max. continuous voltage	255 V
Discharge current I_{max} (8/20) μ s, max.	70 kA
Protection level U_p	<1,5 kV
Residual voltage U_{res} (5 kA)	<0,8 kV
Follow-on current I_f	None
Follow-on current extinguishing capacity I_{fi}	Infinite
TOV voltage U_t (L-N)	450 V / 5 s
Series fuse, max.	315 gL / gG A
Malfunction display	Mechanical, red
Type of mains network	TNC, TNS
Lightning surge current (10/350) μ s	25 kA
Combined pulse U_{oc}	20 kV
TOV voltage U_t (N-PE)	1200 V / 200 ms / 300 A

15617.2

CP DS 250 VG

CP DS 250 VG

Approvals

Standards and regulations

DIN EN 61643-11 (Germany)	Combi-arrester type 1, 2, 3
EN 61643-11 (Europe)	Low voltage SPD - Class I, II and III test
IEC 61643-1 (International)	Low voltage SPD - Class I, II and III test
UL1449 ed.2 (USA)	Low voltage TVSS

15617.2

CP DS 250 VG

CP DS 250 VG

Media

