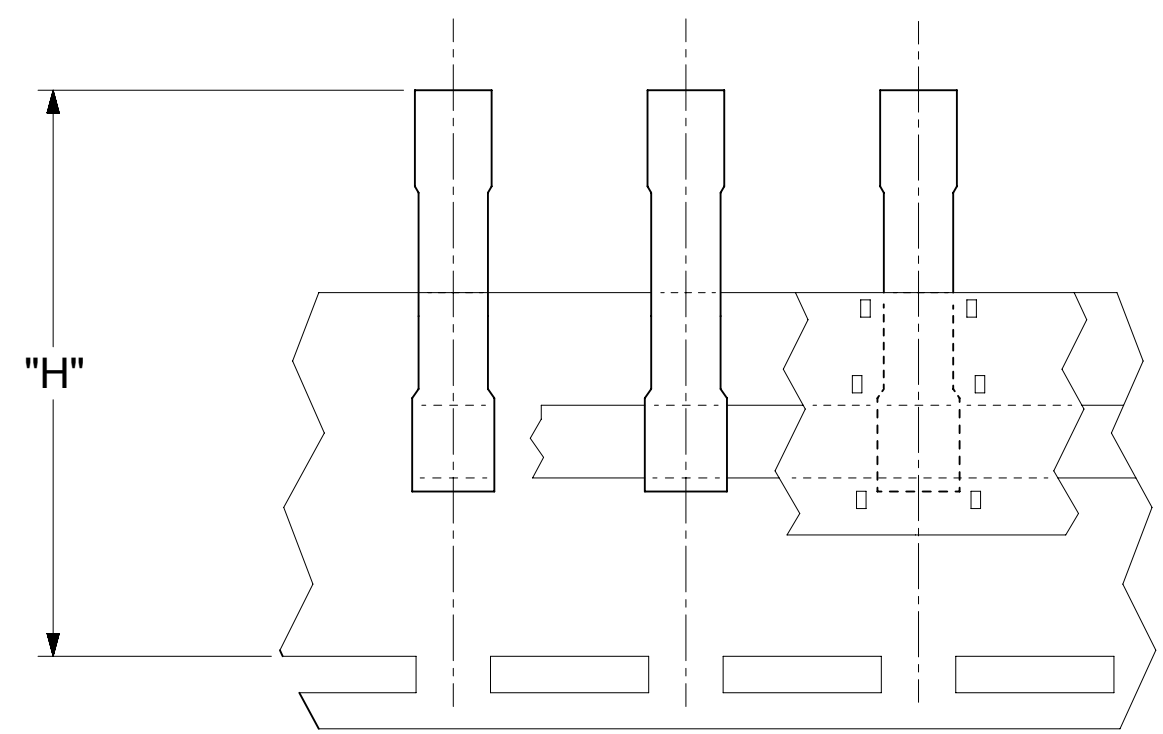
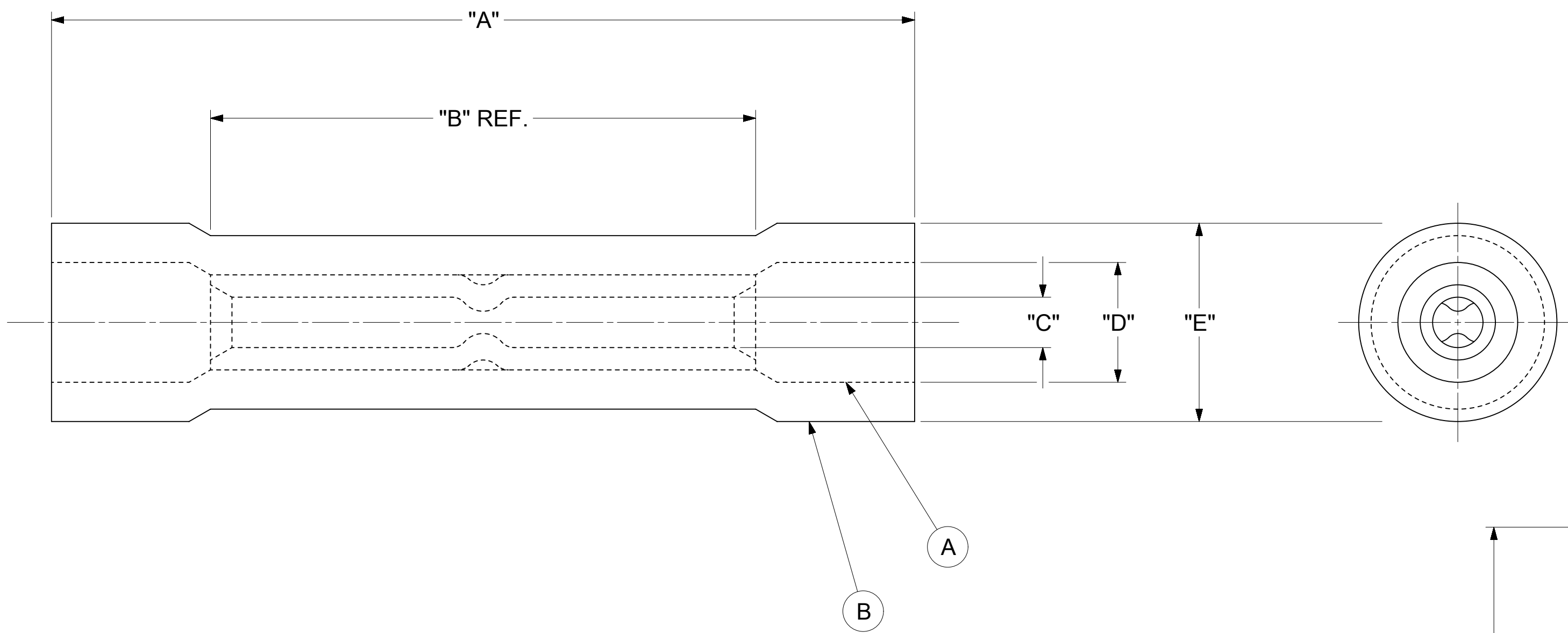


LOOSE PIECE		TAPE MOUNTED		DIMENSIONS						INSULATION COLOR	WIRE RANGE AWG
MATERIAL NUMBER	ENGINEERING NUMBER	MATERIAL NUMBER	ENGINEERING NUMBER	"A" MAX.	"B" REF.	"C" MIN.	"D" MWID	"E" MAX.	"H"		
191540011	AS-V-345X	191540012	AS-V-345XT	1.045 [26.54]	.660 [16.76]	.061 [1.55]	.145 [3.68]	.240 [6.10]	1.430 [36.32]	RED	22-18
191540023	BS-V-331X	191540024	BS-V-331XT	1.090 [27.69]	.660 [16.76]	.084 [2.13]	.170 [4.32]	.270 [6.86]	1.479 [37.57]	BLUE	16-14
191540037	CS-V-346X	191540038	CS-V-346XT	1.270 [32.26]	.815 [20.70]	.129 [3.28]	.260 [6.60]	.360 [9.14]	1.610 [40.89]	YELLOW	12-10



TAPE MOUNTED PARTS

NOTES:

- MATERIAL:
 - (A). BUTT SPLICE CONNECTOR: COPPER TIN PLATED.
 - (B). INSULATION: COLOR CODED VINYL (SEE TABLE).
- MWID: MAXIMUM WIRE INSULATION DIAMETER.
- ALL DIMENSIONS IN INCHES/[MM].
- PARTS ARE ROHS COMPLIANT.
- DIMS. SHOWN ARE FOR REFERENCE ONLY.

SYMBOLS	THIS DRAWING CONTAINS INFORMATION THAT IS PROPRIETARY TO MOLEX ELECTRONIC TECHNOLOGIES, LLC AND SHOULD NOT BE USED WITHOUT WRITTEN PERMISSION									
	DIMENSION UNITS		SCALE		CURRENT REV DESC: MIGRATION TO ECTR/NX					
∇ = 0	INCH/MM		NTS		EC NO: 621658 DRWN: ABENJAMINLW 2019/07/29 CHK'D: GROJAS01 2019/07/31 APPR: JMACNEIL 2019/08/05					
∇ = 0	GENERAL TOLERANCES (UNLESS SPECIFIED)									
∇ = 0			MM	INCH	INITIAL REVISION: DRWN: EIIIF 1987/04/29 APPR: JMACNEIL 2019/08/05					
∇ = 0	4 PLACES	±	---	±						
∇ = 0	3 PLACES	±	---	±	.005					
∇ = 0	2 PLACES	±	0.13	±	.01					
∇ = 0	1 PLACE	±	0.25	±	---					
∇ = 0	0 PLACES	±	---	±	---					
∇ = 0	ANGULAR TOL		± 0.5 °			THIRD ANGLE PROJECTION				
∇ = 0	DRAFT WHERE APPLICABLE MUST REMAIN WITHIN DIMENSIONS				DRAWING		SERIES		MATERIAL NUMBER	
∇ = 0					C-SIZE		19154		SEE TABLE	

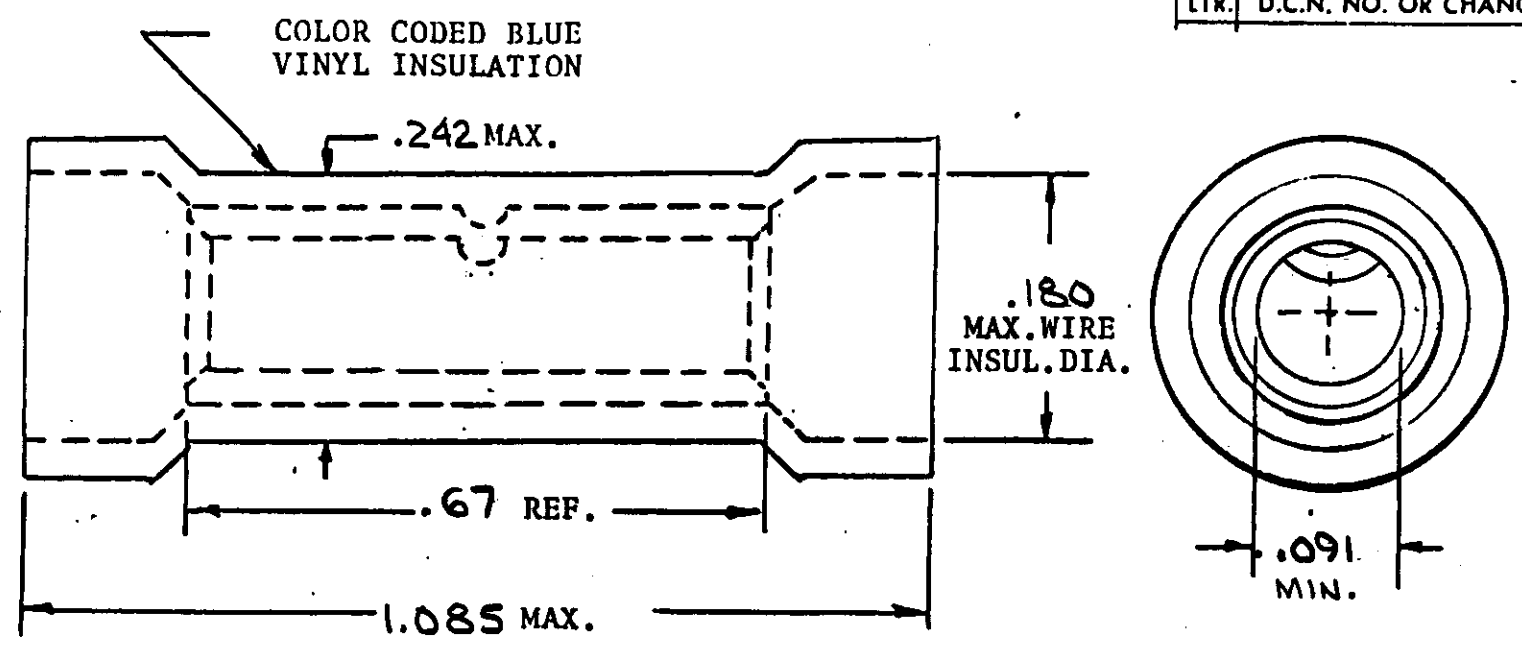
molex

INSULKRIMP BUTT CONNECTOR

PRODUCT CUSTOMER DRAWING

DOCUMENT NUMBER	DOC TYPE	DOC PART	REVISION
191540011	PSD	000	A
MATERIAL NUMBER	CUSTOMER	SHEET NUMBER	
SEE TABLE	GENERAL MARKET	1 OF 1	

FILE NO.	CUSTOMER DWG.		
REVISIONS			
LTR.	D.C.N. NO. OR CHANGE	BY	DATE



MATERIAL: COPPER
 PLATING: ELECTRO TIN .0003

DIMENSIONAL TOLERANCES UNLESS OTHERWISE SPECIFIED			REFERENCE	SCALE: NONE	DATE	TITLE: INSULKRIMP BUTT CONNECTOR WIRE SIZE 16-14 AWG.	
FRAC.	DEC.	ANG.		DRWN. BY: EIMF	2-10-87		
±	±	±		CHKD. BY:			
				APPRD. BY:			
						DWG. NO. A	BS-V-331-X