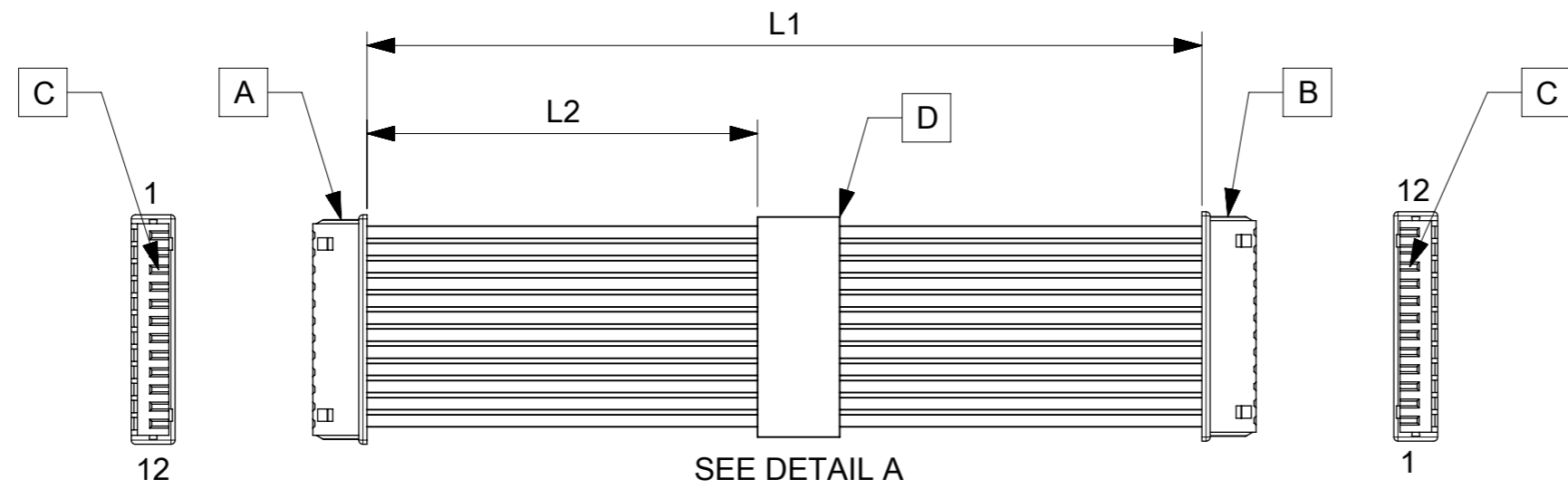


| ITEM | PART# | DESCRIPTION | QTY | UOM |
|------|-----------|---|-----|-----|
| A,B | 510211200 | PicoBlade1.25 Rec Hsg 12P | 2 | PC |
| C | 500588000 | PicoBlade1.25 Crimp Rec Term Chain | 24 | PC |
| D | 887804719 | Blank label 12.7x35.5mm (WHT:12.7mm) HF | 1 | PC |

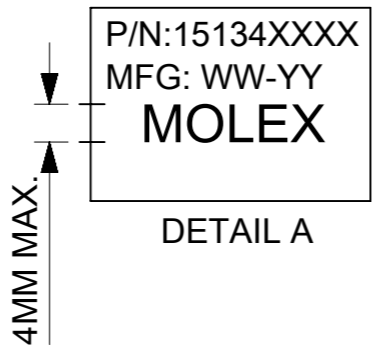
| FROM | TO | DESCRIPTION | COLOR |
|------|-----|----------------------------|-------|
| A1 | B12 | CABLE 28 AWG UL 1061 BLACK | BLACK |
| A2 | B11 | CABLE 28 AWG UL 1061 BLACK | BLACK |
| A3 | B10 | CABLE 28 AWG UL 1061 BLACK | BLACK |
| A4 | B9 | CABLE 28 AWG UL 1061 BLACK | BLACK |
| A5 | B8 | CABLE 28 AWG UL 1061 BLACK | BLACK |
| A6 | B7 | CABLE 28 AWG UL 1061 BLACK | BLACK |
| A7 | B6 | CABLE 28 AWG UL 1061 BLACK | BLACK |
| A8 | B5 | CABLE 28 AWG UL 1061 BLACK | BLACK |
| A9 | B4 | CABLE 28 AWG UL 1061 BLACK | BLACK |
| A10 | B3 | CABLE 28 AWG UL 1061 BLACK | BLACK |
| A11 | B2 | CABLE 28 AWG UL 1061 BLACK | BLACK |
| A12 | B1 | CABLE 28 AWG UL 1061 BLACK | BLACK |



| PART NUMBER | L1 | L2 | TITLE |
|-------------|--------|--------|----------------------------|
| 151341200 | 50±6 | 20±5 | Picoblade 12 Circuit 50MM |
| 151341201 | 100±6 | 45±5 | Picoblade 12 Circuit 100MM |
| 151341202 | 150±8 | 70±5 | Picoblade 12 Circuit 150MM |
| 151341203 | 300±10 | 145±10 | Picoblade 12 Circuit 300MM |
| 151341205 | 450±10 | 220±10 | Picoblade 12 Circuit 450MM |
| 151341206 | 600±10 | 295±10 | Picoblade 12 Circuit 600MM |

| DATE | REV | DESCRIPTION | CHANGER |
|------------|-----|-----------------------------------|---------|
| 26/07/2016 | A | INITIAL RELEASE | DICK |
| 26/04/2019 | B | PROJECT TRANSFER FROM DG TO INDIA | ARAJU |
| 24/06/2019 | B1 | LABEL CHANGE | ARAJU |

- NOTES:
1. Cable assembly to be tested 100% for continuity and polarity.
 2. Label text must be 2mm max. in height with Arial font.
 3. Connector view shown is from mating side.
 4. Label must be wrapped on the cables.
 5. Stick UL label on the outside carton.



| | | | | | | | | |
|---|---|---|--|--|-----------------|--|-------|--|
| QUALITY SYMBOLS ▽ = 0 ▽ = 0 ▽ = 0 ▽ = 0 ▽ = 0 ▽ = 0 ▽ = 0 ▽ = 0 ▽ = 0 ▽ = 0 | EC NO: 619691 DRWN: ARAJU CHK'D: RDESAI01 APPR: RDESAI01 | THIS DRAWING CONTAINS INFORMATION THAT IS PROPRIETARY TO MOLEX ELECTRONIC TECHNOLOGIES, LLC AND SHOULD NOT BE USED WITHOUT WRITTEN PERMISSION | | GENERAL TOLERANCES (UNLESS SPECIFIED) ANGULAR TOL ± ° | | DIMENSION UNITS | SCALE | |
| | | 4 PLACES ± | | mm | NTS | DRWN BY: WLXIE DATE: 2017/08/18 | | |
| | | 3 PLACES ± | | APPR BY: YXZOU DATE: 2017/08/30 | | | | |
| | | 2 PLACES ± | | DRAFT WHERE APPLICABLE MUST REMAIN WITHIN DIMENSIONS | | DRAWING SIZE: A3 THIRD ANGLE PROJECTION | | |
| 1 PLACE ± | | PRODUCT CUSTOMER DRAWING | | SERIES | MATERIAL NUMBER | CUSTOMER | | |
| 0 PLACES ± | | SEE TABLE | | 201234 | SEE TABLE | GENERAL MARKET | | |
| B1 | | DOCUMENT NUMBER: 2012343241 | | DOC TYPE: PSD | DOC PART: 000 | SHEET NUMBER: 1 OF 1 | | |