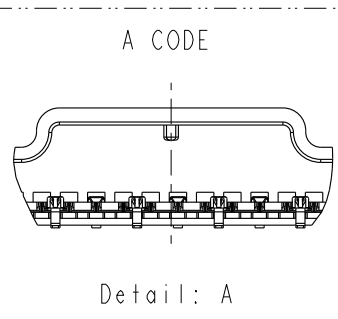
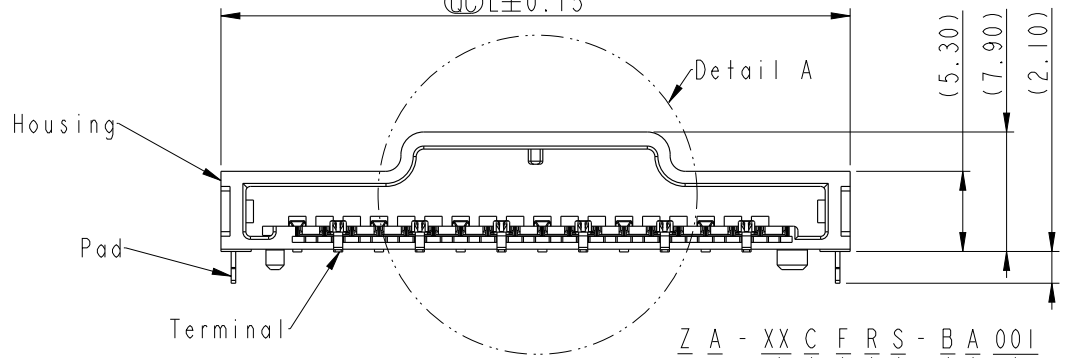
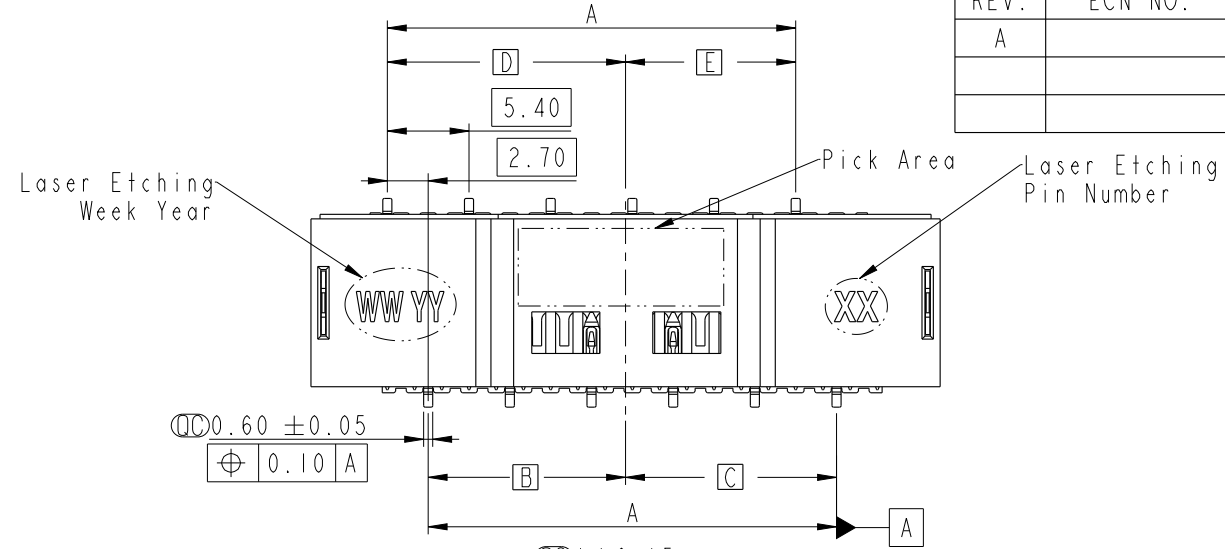


THIS DOCUMENT IS SUBJECT TO CHANGE WITHOUT NOTICE. IT IS CONFIDENTIAL AND A PROPERTY OF AMPHENOL LTW. DISCLOSURE TO THIRD PARTY HAS TO BE AUTHORIZED BY AMPHENOL LTW.

REV.	ECN NO.	DATE	SIGN	DESCRIPTION
A		2021/01/07	Xiaofeng	New Initial

FPC CONNECTOR SIZE						
PIN	L(mm)	A(mm)	B(mm)	C(mm)	D(mm)	E(mm)
8	30.8	16.2	7.65	8.55	10.35	5.85
10	36.2	21.6	13.05	8.55	10.35	11.25
12	41.6	27.0	13.05	10.35	15.75	11.25



Z - ZCONNECT Non Shielded  
 A - A Coded  
 XX - Number of Contacts  
 C - 2.7 Pitch  
 F - Female Connector

001 - Series Number  
 A - AU  
 B - Black  
 S - SMD  
 R - Right Angle

Note:  
 \*  $\varnothing$  Important Dimensions To Check.  
 \* Housing: Thermoplastic Black.  
 \* Terminal: Copper Alloy Gold Plated.  
 \* Pad: Metal.

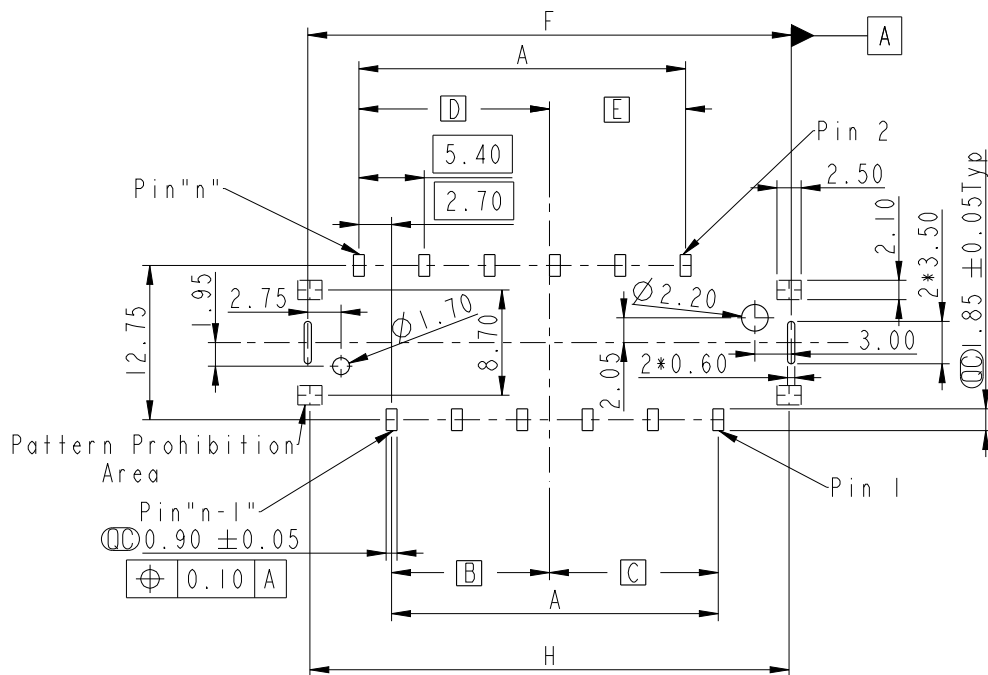
UNIT: mm	$\varnothing$	$\nabla$
TOLERANCE	.X ± 0.25	
	.XX ± 0.1	
	.XXX ± 0.05	
ANGLES	± 1°	

TITLE Z CONN., N SHLD, P 2.7, F SMD			
SCALE 1:1	SIZE A4	SHEET 1 OF 2	
REV. A	WC-REV. .0	$\varnothing$ : Inspection item	

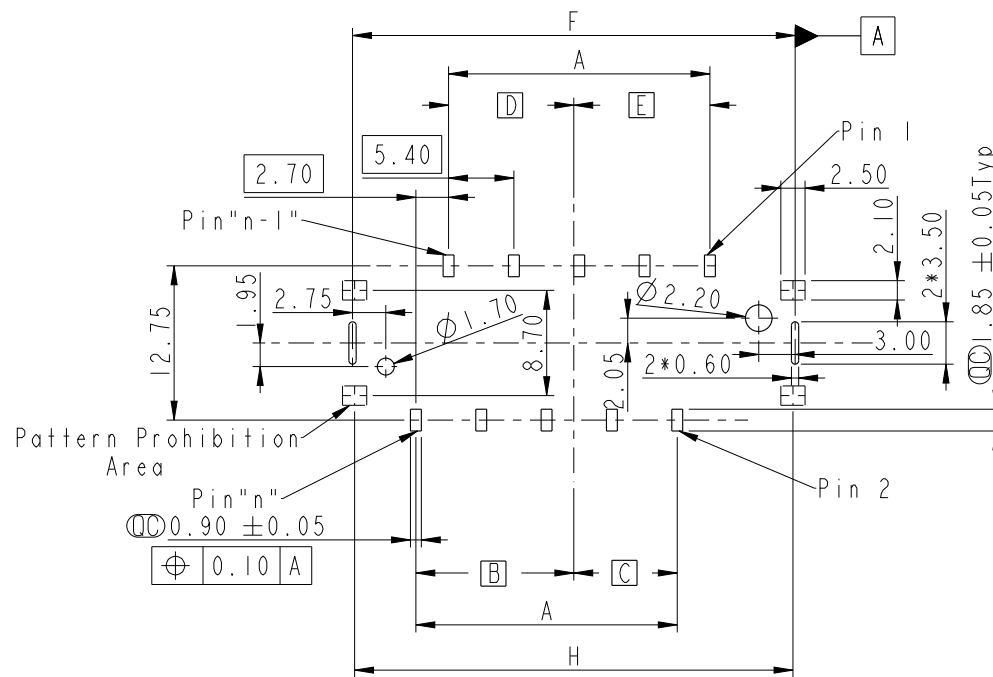
**Amphenol LTW**  
 安費諾亮泰企業股份有限公司

ITEM NO. ZA-XXCFRS-BA0001	DRAWN BY Xiaofeng	DATE 2021/01/07
DWG NO. ZA-XXCFRS-BA0001	CHECKED BY Feng-Li	DATE 2021/01/07
CUSTOMER ALTW	APPROVED BY Jerry	DATE 2021/01/07

THIS DOCUMENT IS SUBJECT TO CHANGE WITHOUT NOTICE. IT IS CONFIDENTIAL AND A PROPERTY OF Amphenol LTW. DISCLOSURE TO THIRD PARTY HAS TO BE AUTHORIZED BY Amphenol LTW.



RECOMMENDED PCB LAYOUT



RECOMMENDED PCB LAYOUT

PCB LAYOUT SIZE

PIN	A(mm)	B(mm)	C(mm)	D(mm)	E(mm)	F(mm)	H(mm)
24	16.2	7.65	8.55	10.35	5.85	29.15	28.8
28	23.4	11.25	12.15	32.75	11.25	39.95	39.6

PCB LAYOUT SIZE

PIN	A(mm)	B(mm)	C(mm)	D(mm)	E(mm)	F(mm)	H(mm)
22	21.6	13.05	8.55	10.35	11.25	32.75	32.4

UNIT: mm			TITLE Z CONN., N SHLD, P 2.7, F SMD				
TOLERANCE	.X ±0.25	.XX ±0.1	.XXX ±0.05	ANGLES ±1°	SCALE 1:1	SIZE A4	SHEET 2 OF 2
REV. A	WC-REV. .0	QC: Inspection item					

**Amphenol LTW**  
安費諾亮泰企業股份有限公司

ITEM NO. ZA-XXCFRS-BA0001	DRAWN BY Xiaofeng	DATE 2021/01/07
DWG NO. ZA-XXCFRS-BA0001	CHECKED BY Feng-Li	DATE 2021/01/07
CUSTOMER ALTW	APPROVED BY Jerry	DATE 2021/01/07