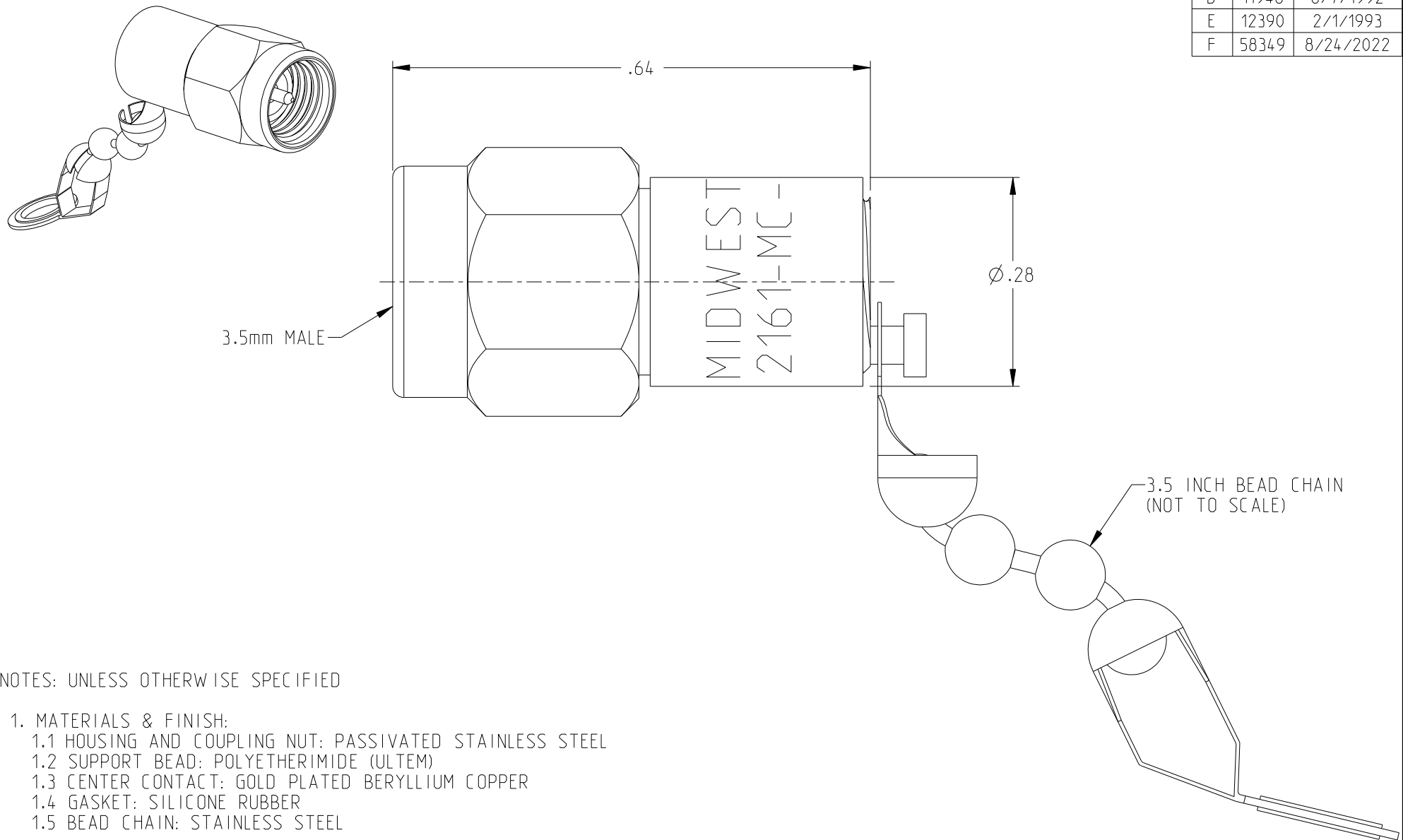


REV	ECO	DATE
D	11948	8/7/1992
E	12390	2/1/1993
F	58349	8/24/2022



NOTES: UNLESS OTHERWISE SPECIFIED

1. MATERIALS & FINISH:

- 1.1 HOUSING AND COUPLING NUT: PASSIVATED STAINLESS STEEL
- 1.2 SUPPORT BEAD: POLYETHERIMIDE (ULTEM)
- 1.3 CENTER CONTACT: GOLD PLATED BERYLLIUM COPPER
- 1.4 GASKET: SILICONE RUBBER
- 1.5 BEAD CHAIN: STAINLESS STEEL

2. SPECIFICATIONS:

- 2.1 FREQUENCY RANGE: DC TO 18 GHz
- 2.2 VSWR (MAX): 1.12:1
- 2.3 INPUT POWER (MAX): 2 WATTS AT +25°C, DERATED LINEARLY TO 1 WATT AT +125°C
- 2.4 IMPEDANCE: 50 OHMS NOMINAL
- 2.5 TEMPERATURE RANGE: -65°C TO +125°C

<p>NOTICE: The information in this drawing is PROPRIETARY and must not be used without the permission of Cinch Connectivity Solutions. It may contain data whose export is restricted. Verify status prior to exporting.</p> <p>INTERPRET DRAWING IN ACCORDANCE WITH ASME Y14.5-2018</p>	<p>Model No: TRM-2161-MC-35M-02</p> <p>RoHS2 <input checked="" type="checkbox"/> 2015/863/EU</p> <p>UNLESS OTHERWISE SPECIFIED UNITS: INCH</p> <p>.XX ±.02 .XXX ±.005 ANGLES ±1°</p>	<p>Cage Code 34078</p> <p>3RD ANGLE PROJECTION</p> <p>ENGINEER: J. KEREKES</p> <p>Date: 8/24/2022</p>	<p>MIDWEST MICROWAVE</p> <p>Title: TERMINATION 3.5MM MALE</p> <p>Drawing No. TRM-2161-MC-35M-02-01</p> <p>Size A DO NOT SCALE DRAWING</p>	<p>REV. F</p> <p>Sheet 1 OF 1</p>
	<p>Workmanship Std:</p>	<p>1 OF 1</p>		