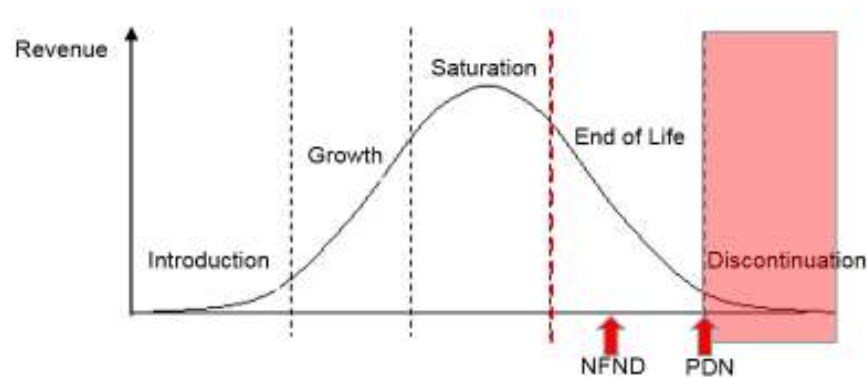


Light is OSRAM

Product Discontinuation (acc. JEDEC J-STD-048) OS-PD-2018-081

01-Nov-2018

Last order:	01-Feb-2019
Last delivery:	01-May-2019
Reason:	Streamline of product portfolio



Please direct your feedback to your local Sales office.

DISCONTINUED				NEW (REPLACEMENT)			
Device	Ordering Code	Function	Brand	Device	Datasheet Ordering Code	Function	Brand
SPL BK81-20							
SPL BK81-20 (803 +/-3NM)	Q65111A7630	Laser	Laser Bar	---	---	---	---
SPL BK81-20 (803.5 +/-2NM)	Q65112A2005	Laser	Laser Bar	---	---	---	---
SPL BK91-40							
SPL BK91-40 (912 +/-5NM)	Q65111A7638	Laser	Laser Bar	---	---	---	---
SPL BM81-20							
SPL BM81-20 (803 +/-3NM)	Q65111A7634	Laser	Laser Bar	---	---	---	---
SPL BM81-20 (805 +/-2NM)	Q65112A1354	Laser	Laser Bar	---	---	---	---
SPL BM81-20 (806 +/-2NM)	Q65112A3978	Laser	Laser Bar	---	---	---	---
SPL BM81-20 (807,5 +/-2,5)	Q65112A1314	Laser	Laser Bar	---	---	---	---
SPL BN94-40-8							
SPL BN94-40-8 (935 +/-3NM)	Q65112A2858	Laser	Laser Bar	---	---	---	---
SPL BN94-40-8							
SPL BN98-40-8 (969 +/-3NM)	Q65112A2859	Laser	Laser Bar	---	---	---	---

Products Affected by Product Discontinuation Notification

Number: OS-PD-2018-081

Name: Discontinuation due to product portfolio streamline

Release Date: 11/1/2018

Last Order: 2/1/2019

Last Delivery: 5/1/2019

DISCONTINUED

NEW (REPLACEMENT)

<i>Product</i>	<i>QNumber</i>	<i>QNumber Description</i>	<i>Part Number</i>	<i>Product</i>	<i>QNumber</i>	<i>QNumber Description</i>	<i>Part Number</i>
SPL BK81		SPL BK81-20					
SPL BK81	Q65111A7630	SPL BK81-20 (803 +/-3NM)	SPL BK81-20 (803 +/-3NM)		---	---	
SPL BK81	Q65112A2005	SPL BK81-20 (803.5 +/-2NM)	SPL BK81-20 (803.5 +/-2NM)		---	---	
SPL BK91		SPL BK91-40					
SPL BK91	Q65111A7638	SPL BK91-40 (912 +/-5NM)	SPL BK91-40 (912 +/-5NM)		---	---	
SPL BM81		SPL BM81-20					
SPL BM81	Q65111A7634	SPL BM81-20 (803 +/-3NM)	SPL BM81-20 (803 +/-3NM)		---	---	
SPL BM81	Q65112A1314	SPL BM81-20 (807,5+/-2,5)	SPL BM81-20 (807,5+/-2,5)		---	---	
SPL BM81	Q65112A1354	SPL BM81-20 (805 +/-2NM)	SPL BM81-20 (805 +/-2NM)		---	---	
SPL BM81	Q65112A3978	SPL BM81-20 (806 +/-2NM)			---	---	
SPL BN94		SPL BN94-40-8					
SPL BN94		SPL BN94-40-8					
SPL BN94	Q65112A2858	SPL BN94-40-8 (935 +/-3NM)			---	---	
SPL BN98	Q65112A2859	SPL BN98-40-8 (969 +/-3NM)			---	---	