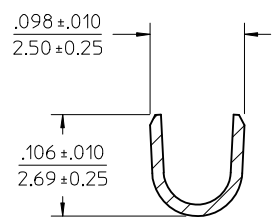


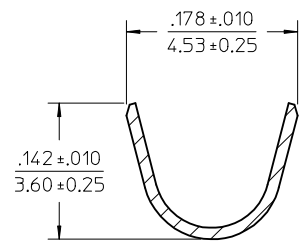
CARRIER STRIP PROGRESSION

NOTES:

1. MATERIAL: C26000 BRASS.
2. FINISH: 20 MICRINCH (0.5 MICROMETER) MINIMUM HOT TIN DIP OVERALL.
3. PRODUCT SPECIFICATION: PS-43374-001
4. PACKAGING: TERMINALS WOUND ON 24" REELS WITH PAPER INTERLEAF.
5. THIS TERMINAL FOR USE WITH 18-20 AWG STRANDED WIRE, UL 1007 OR UL 1015 STYLES, .071-.112 INSULATION DIAMETER. FOR FURTHER INFORMATION REFER TO MOLEX APPLICATION TOOLING SPECIFICATION.
6. TERMINAL MATES TO .125/(3.18 WIDE X .020/(0.51) THICK FLAT BLADE TERMINALS OR MOLEX 43178 SERIES CRIMP TERMINALS.



SECTION Y-Y  
CONDUCTOR CRIMP



SECTION X-X  
INSULATION CRIMP

CORRECT TOLERANCE EC NO: UCP2014-5466 2014/07/09 DRAWN:JDOX CHKD:ANDERSON APPR:FSMITH 2014/07/09 2014/07/17	QUALITY SYMBOLS ▽=0 ▽=0 ▽=0	GENERAL TOLERANCES (UNLESS SPECIFIED)		DIMENSION STYLE	SCALE	DESIGN UNITS	THIRD ANGLE PROJECTION
				IN/MM	10:1	INCH	
		mm	INCH	DRAWN BY	DATE	TITLE	
				BWIRKUS	09-09-2009	SABRE 18-20AWG CRIMP FEM W/O TPA; .125 WIDE TAB; UL1007 OR 1015 WIRE	
		4 PLACES ± --- ± ---		CHECKED BY	DATE		
		3 PLACES ± --- ± .005		BWIRKUS	09-09-2009		
		2 PLACES ± 0.13 ± .010		APPROVED BY	DATE		
		1 PLACE ± 0.25 ± ---		APATEL	09-09-2009		
		0 PLACE ± --- ± ---		MATERIAL NO.	DOCUMENT NO.		SHEET NO.
				433742001	SD-43374-301		1 OF 1
				THIS DRAWING CONTAINS INFORMATION THAT IS PROPRIETARY TO MOLEX INCORPORATED AND SHOULD NOT BE USED WITHOUT WRITTEN PERMISSION			