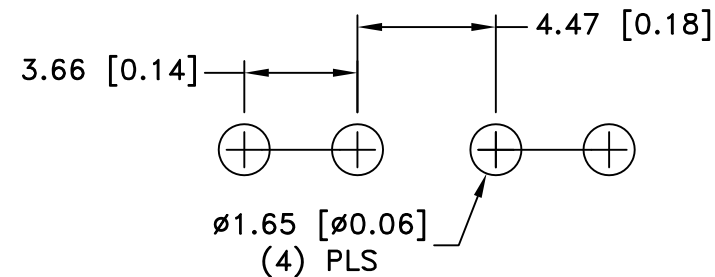
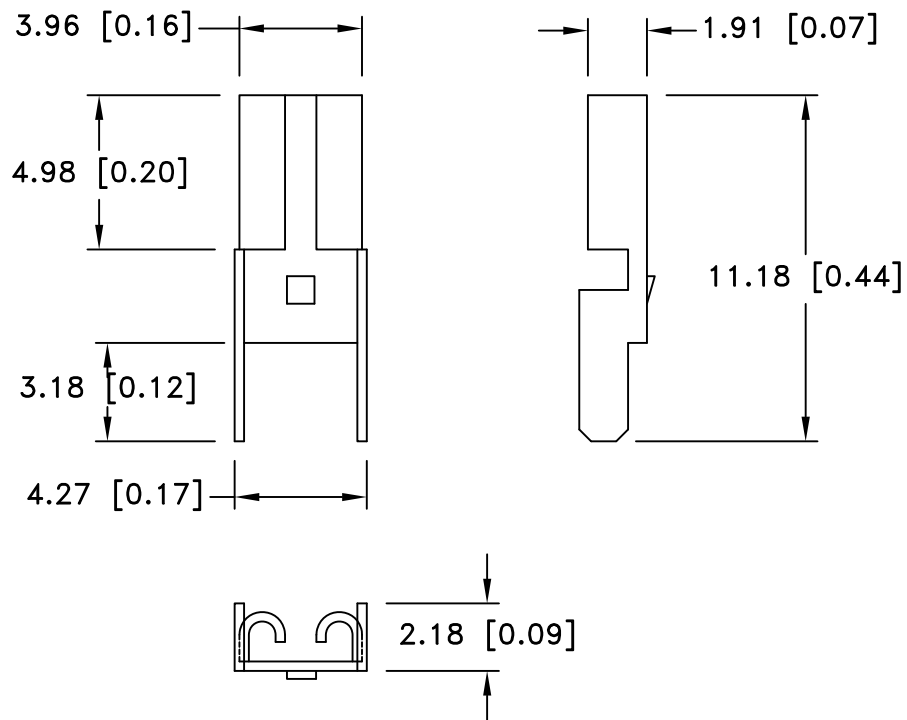



Date	SYM	REVISION RECORD	AUTH	DR.	CK.
7/08/06	A	Added "ROHS COMPLIANT"	T B	B S	
2/07/14	B	Updated Specification	T B	B S	



MOUNTING DETAIL FOR TWO CLIPS

SPECIFICATION:

Current Rating: 15 Amps
 Fuse Entry: Vertical
 Fuse Type: Automotive
 Material: .012 [.30] Brass, Nickel Plate
 Mounting: THM
 Style: CLIP
 Fuse Reference: Littelfuse 297 or 997 series / Bussmann ATM series / APM / or equivalent
 Fuse Size: Mini
 ROHS 2 COMPLIANT

Tolerance (Except as noted)	 Memory Protection Devices, Inc 200 Broad Hollow Road, Farmingdale, New York 11735	Scale	Drawn By B.S.
			Approved By T.B.
decimal $\pm .5$ (.020)	Title AUTO FUSE CLIP FOR .110 x .032 MINI VERTICAL BLADE		
Fractional $\pm .8$ (.030)		Date 02/07/14	Drawing Number BK-6011
Angular $\pm 3^\circ$			