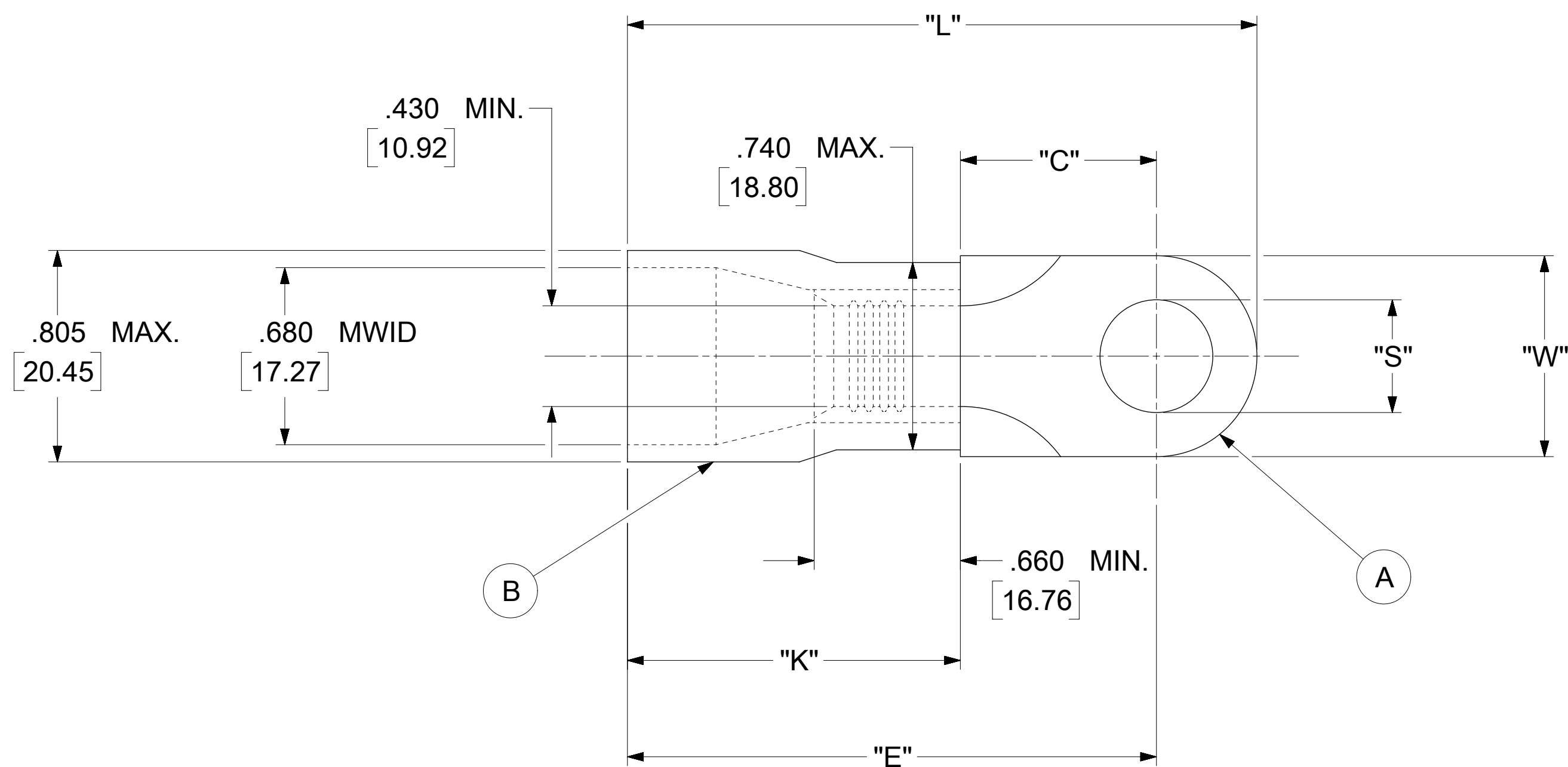


LOOSE PIECE		SPECIFICATIONS						
MATERIAL NUMBER	ENGINEERING NUMBER	STUD SIZE	"S" ±.005 [0.13]	"W"	"C" MIN.	"E" MAX.	"K" MAX.	"L" MAX.
190710302	H-680-76X	76	.453 [11.51]	.882±.012 [22.40±0.30]	.740 [18.80]	2.235 [56.77]	1.355 [34.42]	2.620 [66.55]
190710303	H-681-14X	14	.265 [6.73]	.820±.013 [20.83±0.33]	.740 [18.80]	2.235 [56.77]	1.455 [36.96]	2.620 [66.55]
190710305	H-681-38X	38	.390 [9.91]					
190710306	H-681-56X	56	.328 [8.33]					



NOTES:

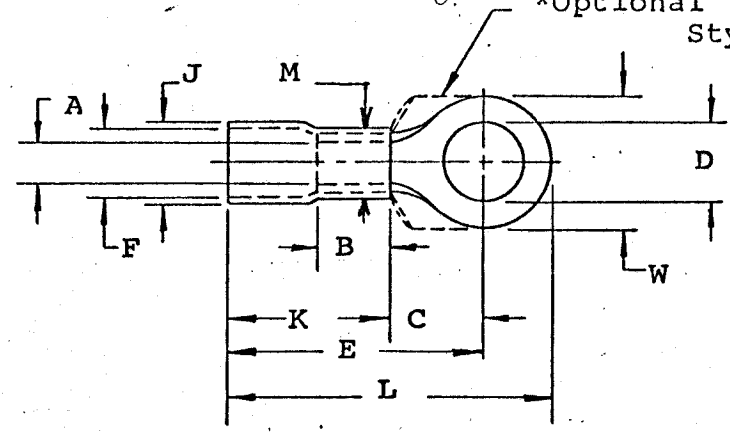
- MATERIAL:
  - (A). TERMINAL: COPPER (STOCK TKN .075[1.90])  
PLATING: ELECTRO-TIN (.0003 MIN.)
  - (B). INSULATION: MOLDED PVC (BLUE)
- MWID: MAXIMUM WIRE INSULATION DIAMETER
- WIRE SIZE: 1/0 AWG  
52.95 MM<sup>2</sup>
- "UL" LISTING #E32244  
"CSA" LISTING #18689
- ALL DIMENSIONS IN INCHES/[MM].
- PARTS ARE ROHS COMPLIANT.
- DIMS. SHOWN ARE FOR REFERENCE ONLY.

SYMBOLS	THIS DRAWING CONTAINS INFORMATION THAT IS PROPRIETARY TO MOLEX ELECTRONIC TECHNOLOGIES, LLC AND SHOULD NOT BE USED WITHOUT WRITTEN PERMISSION									
	DIMENSION UNITS		SCALE		CURRENT REV DESC: MIGRATION TO ECTR/NX					
	INCH/MM		NTS		EC NO: 620820 DRWN: ABENJAMINLW 2019/07/10 CHK'D: GROJAS01 2019/07/17 APPR: JMACNEIL 2019/08/06 INITIAL REVISION: DRWN: JTK 1970/01/21 APPR: JMACNEIL 2019/08/06					
GENERAL TOLERANCES (UNLESS SPECIFIED)		MM		INCH		DOCUMENT NUMBER: 190710302 DOC TYPE: PSD DOC PART: 000 REVISION: A				
4 PLACES ± --- ± ---		3 PLACES ± --- ± .005		2 PLACES ± 0.13 ± .01						1 PLACE ± 0.25 ± ---
ANGULAR TOL ± 0.5°		DRAFT WHERE APPLICABLE MUST REMAIN WITHIN DIMENSIONS		THIRD ANGLE PROJECTION		DRAWING		SERIES		
				D-SIZE		19071		MATERIAL NUMBER		
								CUSTOMER		
								SEE TABLE		
								GENERAL MARKET		
								SHEET NUMBER		
								1 OF 1		

MATERIAL: Copper  
 PLATING: Electro-Tin (.0003 Min.)  
 INSULATION: PVC, Color Coded Blue  
 STUD SIZES: ("D" ±.005)

INSULKRIMP X

\*Optional Style



"M" - .740" Maximum

- 14 - .265"
- 56 - .328"
- 38 - .390"
- 76 - .453"
- 12 - .515"
- 58 - .656"
- 34 - .781"
- 78 - .906"

Part Number	"W"	"C" Min.	"E" Max.	"K" Max.	"L"	"A" Min.Avg.	"F" (MWID)	Stock Thickness	"J" Max.	"B" Min.	Available Stud Size
H-680-X*	.894 .870	.740		1.355		.430	.680	.075	.805	.660	14, 56, 38, 76 12
H-681-X	.833 .807	.740	2.235	1.455	2.620	.430	.680	.075	.805	.660	14, 56, 38
H-682-X	1.270 1.244	1.276		1.355		.430	.680	.075	.805	.660	38, 12, 58, 34 78

NOTE: (MWID) denotes maximum wire insulation diameter.



TITLE: CUSTOMER DRAWING  
 1/0 WIRE RANGE (H)  
 RING TONGUE TERMINAL

DIMENSIONAL TOLERANCE UNLESS OTHERWISE SPECIFIED		
FRAC.	DEC.	ANG.
±	±	±

REVISION	SCALE: _____	DATE
	DRWN. BY: JTK	1-21-70
	CHKD. BY:	
	APPRD. BY:	
	DRAWING NO.:	