

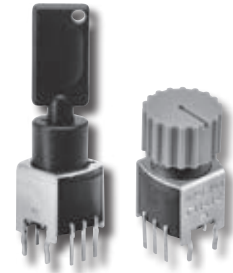
Change Notice

SK & NR01 Series

Changes to Location & Production for SK Antistatic Process Sealed Keylocks & NR01 Rotaries

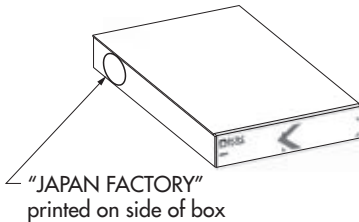
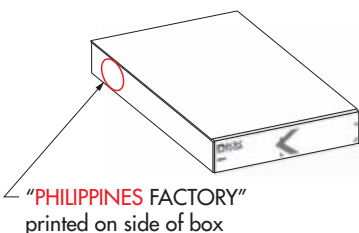
Type of Change:

- Engineering Part Number
- Product Appearance



Changes for SK Keylocks & NR01 Rotaries

I. There will be changes for the SK Antistatic Process Sealed Keylocks and NR01 Rotary Switches. The lot number on the switch cases will have a dot mark above the second digit, and the box in which the switches are packaged for shipping will read “PHILIPPINES FACTORY” instead of “JAPAN FACTORY.” These revisions will apply to standard and custom products. Effected standard part numbers for SK and NR01 Series are on the table displayed on page 2.

	Lot Number	Shipping Box
Before Changes	Example of Lot Number 84	 <p>“JAPAN FACTORY” printed on side of box</p>
After Changes	Example of Lot Number with Dot Mark Above Second Digit 8[•]4	 <p>“PHILIPPINES FACTORY” printed on side of box</p>

Notes

There are no changes to the switches’ dimensions or specifications.
 The location of the lot number on switch case may vary depending on the part number.
 Contact the factory if more details are needed.

Effective Date

Location and production changes for SK Keylocks and NR01 Rotaries will be effective March 2019.



<http://www.nkkswitches.com> • 1.877.2BUYNKK (228.9655)
 7850 East Gelding Drive • Scottsdale, AZ 85260 • Telephone 480.991.0942 • Fax 480.998.1435

Change Notice



SK Series

Changes to Production for SK Antistatic Process Sealed Keylocks

Type of Change:

- Engineering Part Number
 Product Appearance

2. Changes to production of the SK Antistatic Process Sealed Keylock Switches will include the removal of "JAPAN" on the switch case and the replacement of the older logo with the updated NKK logo. These revisions will apply to standard and custom SK switches. Effected standard part numbers are displayed below.

	Switch Case	Identification
Before Changes	"JAPAN" on Switch Case	Older NKK Logo 
After Changes	"JAPAN" on Switch Case Removed	NKK Logo Updated 

Notes

There are no changes to the switches' dimensions or specifications.
 The location of the logo on switch case may vary depending on the part number.
 Contact the factory if more details are needed.

NR01 Series Part Numbers for Change 1			
NR01103ANG13	NR01103ANG13-2H	NR01104ANG13-2C	NR01105ANG13-1H
NR01103ANG13-1A	NR01104ANG13	NR01104ANG13-2H	NR01105ANG13-2A
NR01103ANG13-1C	NR01104ANG13-1A	NR01105ANG13	NR01105ANG13-2C
NR01103ANG13-1H	NR01104ANG13-1C	NR01105ANG13-1A	NR01105ANG13-2H
NR01103ANG13-2A	NR01104ANG13-1H	NR01105ANG13-1A	—
NR01103ANG13-2C	NR01104ANG13-2A	NR01105ANG13-1C	—
SK Series Part Numbers for Changes 1 & 2			
SK13AEG13	SK13AEG30	SK15AEG13	SK15AEG30

Effective Date

Production changes for SK Series will be effective March 2019.

NKK
SWITCHES

<http://www.nkkswitches.com> • 1.877.2BUYNKK (228.9655)
 7850 East Gelding Drive • Scottsdale, AZ 85260 • Telephone 480.991.0942 • Fax 480.998.1435