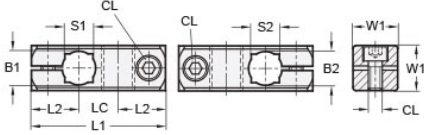




MT8/8-CC2W-A


Ruland Two-Way Connector Clamp, Thru Holes 8mmx8mm, L 37mm, Aluminum



Description

Ruland MT8/8-CC2W-A a two-way connector clamp with perpendicular thru holes for 8mm round tubes, M4 clamp screws, 14mm width and height, and 37mm overall length. It is designed to fit on Ruland tubes and flange bolt bases that begin with MT8. MT8/8-CC2W-A is aluminum and screws are 304 stainless steel for use in most industrial applications. This two-way connector is commonly used to support tubes for mounting sensors, screens, reflectors, plexiglass machine guards, and other industrial components. Thru holes are perpendicular to one another for fixed mounting of components at a 90° angle. MT8/8-CC2W-A is ideal for applications where the tube angles remain fixed such as on conveyors. MT8-ALK-M4-16 adjustable clamping handles can be used in place of standard hardware if rapid fine repositioning of the tube(s) is required. MT8/8-CC2W-A is manufactured by Otto Ganter, inventoried by Ruland, and RoHS3 compliant.

Product Specifications

Thru Hole 1 Diameter B1	8 mm	Thru Hole 2 Diameter B2	8 mm
Thru Hole Tolerance	+0.09/-0 mm	Thru Hole 2 Tolerance	+0.09/-0 mm
Overall Length L1	37 mm	Edge To Center L2	13.5 mm
Center To Center LC	10 mm	Width & Height W1	14 mm
Clamp Screw CL	M4	Weight (lbs)	0.035300
Material Specification	Aluminum	Manufacturer	JW Winco/ Otto Ganter
UPC	634529231579	Country of Origin	Germany
Tariff Code	7609.00.0000		
Note 1	Performance ratings are for guidance only. The user must determine suitability for a particular application.		
Prop 65	 WARNING This product can expose you to the chemical Nickel (metallic), known to the State of California to cause cancer. For more information go to www.P65Warnings.ca.gov .		