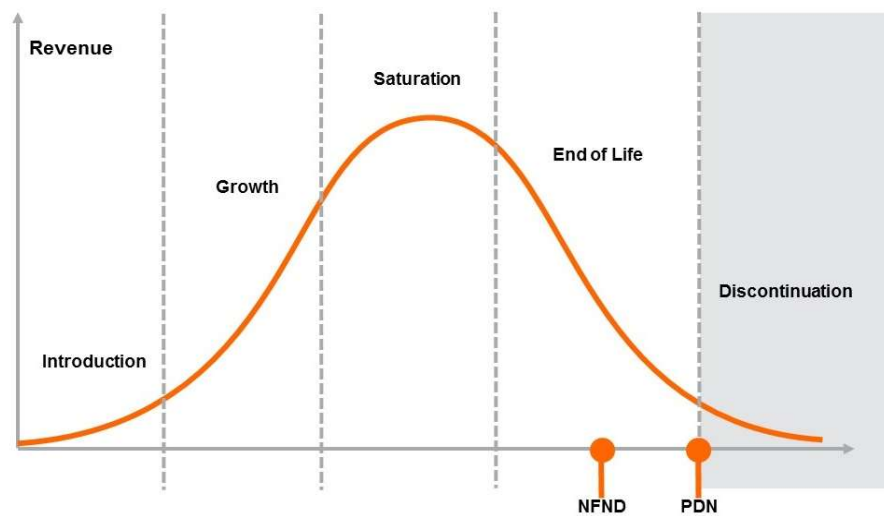


Product Or Individual Q-Code Discontinuation (acc. JEDEC J-STD-048)
OS-PDN-2021-087

15 July 2021

Last order: 01 August 2021
Last delivery: 01 August 2021



Please direct your feedback to your local Sales office.

DISCONTINUED				NEW (REPLACEMENT)		
Device	Ordering Code	Brand	Reason for discontinuation	Device	Datasheet Ordering Code	Brand
GW JTLRSX.EM-L1L2-65S5-1-100-R33	Q65112A9884	DURIS E 2835	No sufficient future volume forecast	No Replacement		
GW JTLRSX.EM-L1L2-40S5-1-100-R33	Q65112A9885	DURIS E 2835	No sufficient future volume forecast	No Replacement		
GW JTLRSX.EM-L0L1-30S5-1-100-R33	Q65112A9886	DURIS E 2835	No sufficient future volume forecast	No Replacement		