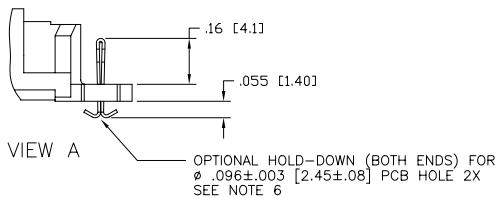
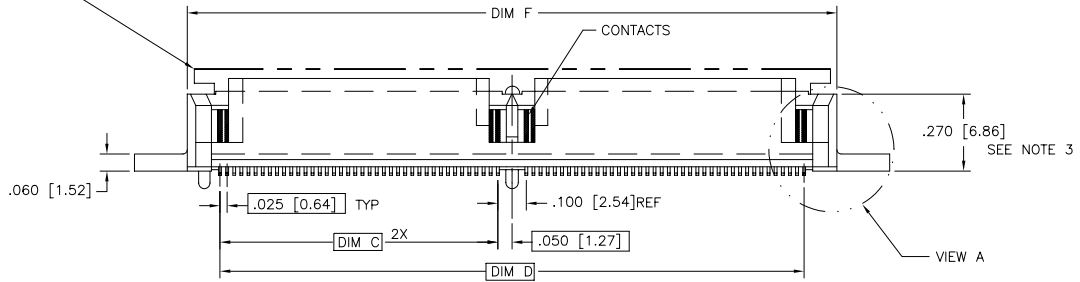
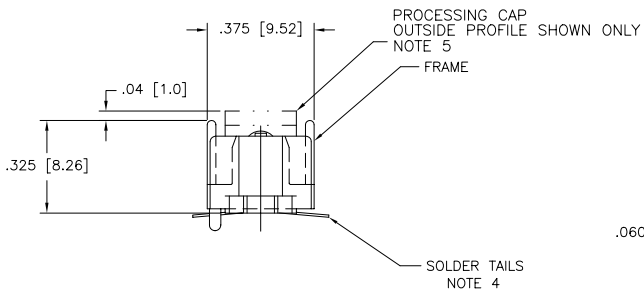
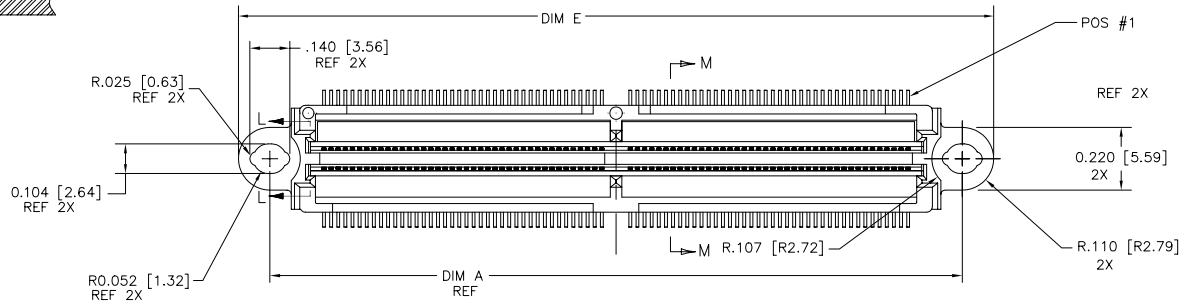
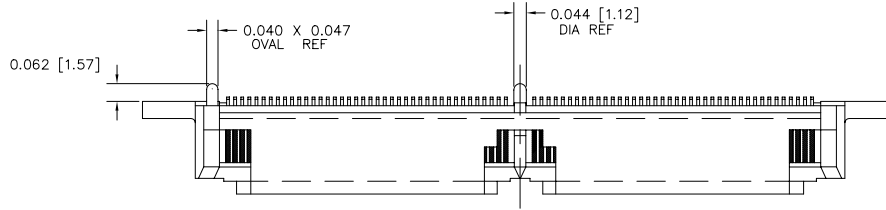
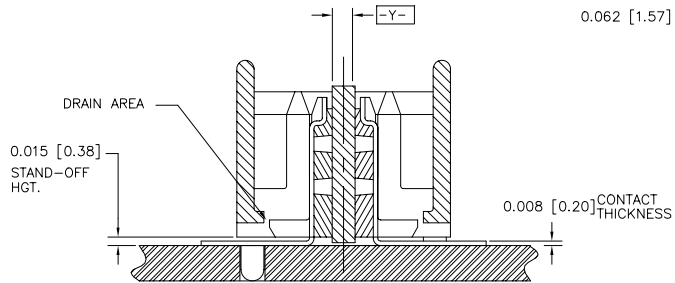
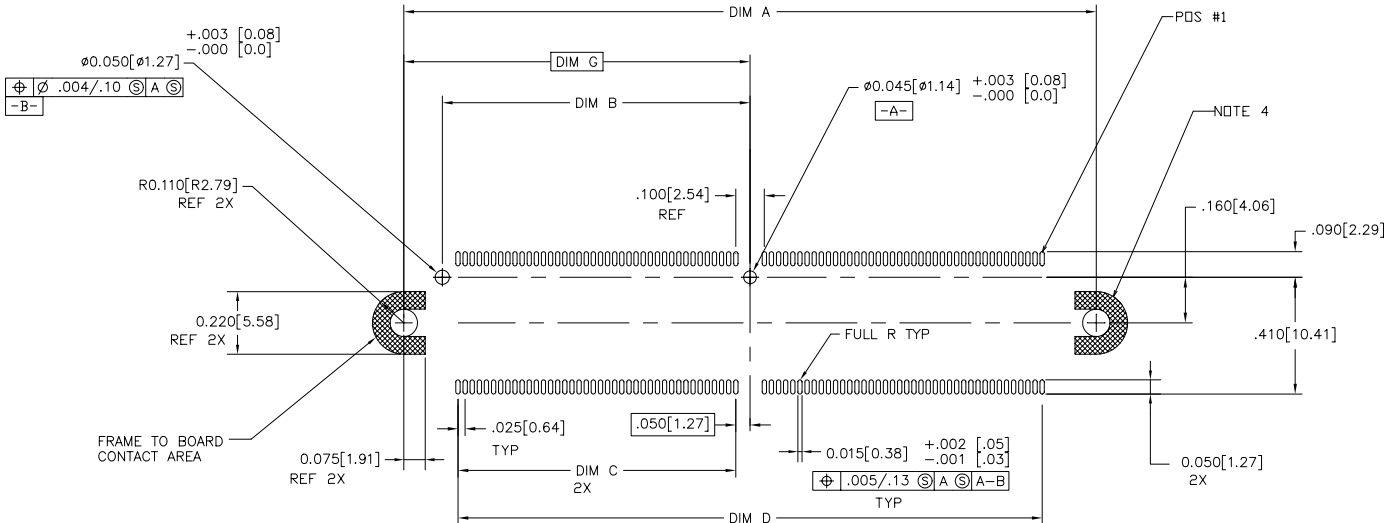


PRODUCT NUMBER
SEE TABLE

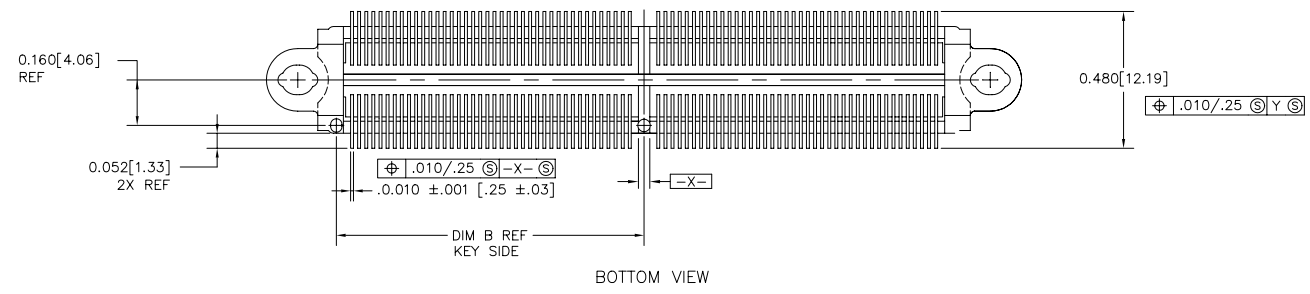


mat'l. code		surface		tolerance		projection		product family	
-		ISO 1302 ✓		ISO 406		INCH/MM		MICROPAX	
ISO 1101		tolerances unless otherwise specified		.XX±.01/.3		scale 1:1		title	
ltr	ecn	no	dr	date	angles	linear		MICROPAX .025M SMT	
G	v50646	MRC		6/23/95				PLUG DOUBLE MODULE	
H	v51287	MRC		10/20/95				dwg no	
J	E70095	SAR		7/22/97	0°±2'			91294	
K	v01503	CGD	dr	6/12/00	T. HOUTZ	3/04/93	sheet 1 of 3		
L	v12115	CRG		8/17/01	M. HAHN	3/04/93	size		
M	M05-0082	MHT	chr	5/06/05	M. HAHN	3/04/93	A3		
N	M06-0279	AEA	appd	7/22/06	M. HAHN	3/04/93	type		
sheet	revision	N	N	N			Product Customer Drawing		
index	sheet	1	2	3					

PRODUCT NUMBER
SEE TABLE



PROPOSED TERMINATION REQUIREMENTS



BOTTOM VIEW

FCI connect.com
FCI
Copyright FCI

mat'l. code		surface		tolerance		projection		product family	
-		ISO 1302 ✓		ISO 406		ISO 1101		MICROPAX	
ltr		ecn no dr		date		tolerances unless otherwise specified		title	
N						.XX±.01/.3		MICROPAX .025M SMT	
						linear .XXX±.005/.13		PLUG DOUBLE MODULE	
						.XXXX±.0020/.051		scale 1:1	
						0'±2'		dwg no	
				dr T. HOUTZ		3/04/93		sheet 2 of 3 size	
				enr M. HAHN		3/04/93		91294 A3	
				chr M. HAHN		3/04/93		type Product Customer Drawing	
				appd M. HAHN		3/04/93			
sheet index		revision sheet							

form: A3

PRODUCT	NO. OF CONTACTS	DIM A	DIM B	DIM C	DIM D	DIM E	DIM F	DIM G	CONTACT PLATING NOTE 2	HOLD-DOWN	PROCESSING CAP
91294-001	120	1.930/50.95	.830/21.08	.725/18.42	1.550/39.37	2.150/54.61	1.790/45.47	.965/24.51	30 GXT	OPTIONAL SEE NOTE 6	CAPS INSTALLED ON CONNECTOR
-002	160	2.430/61.72	1.080/27.43	.975/24.76	2.050/52.07	2.650/67.31	2.290/58.16	1.215/30.86	30 GXT		NOT SHIPPED ON CONNECTOR
-003	200	2.930/74.42	1.330/33.78	1.225/31.12	2.550/64.77	3.150/80.01	2.790/70.87	1.465/37.21	30 GXT		CAPS SUPPLIED LOOSE PIECE
-033	200	2.930/74.42	1.330/33.78	1.225/31.12	2.550/64.77	3.150/80.01	2.790/70.87	1.465/37.21	30 GXT		
91294-413	200	2.930/74.42	1.330/33.78	1.225/31.12	2.550/64.77	3.150/80.01	2.790/70.87	1.465/37.21	60 GXT		

LEAD FREE OPTION;

91294-001LF	120	1.930/50.95	.830/21.08	.725/18.42	1.550/39.37	2.150/54.61	1.790/45.47	.965/24.51	30 GXT	OPTIONAL SEE NOTE 6	CAPS INSTALLED ON CONNECTOR
-002LF	160	2.430/61.72	1.080/27.43	.975/24.76	2.050/52.07	2.650/67.31	2.290/58.16	1.215/30.86	30 GXT		NOT SHIPPED ON CONNECTOR
-003LF	200	2.930/74.42	1.330/33.78	1.225/31.12	2.550/64.77	3.150/80.01	2.790/70.87	1.465/37.21	30 GXT		CAPS SUPPLIED LOOSE PIECE
-033LF	200	2.930/74.42	1.330/33.78	1.225/31.12	2.550/64.77	3.150/80.01	2.790/70.87	1.465/37.21	30 GXT		
91294-413LF	200	2.930/74.42	1.330/33.78	1.225/31.12	2.550/64.77	3.150/80.01	2.790/70.87	1.465/37.21	60 GXT		

NOTES:

- ① MATERIALS:
DIELECTRIC: LCP
CONTACTS: PHOS BRONZE
FRAME: ZINC ALLOY #3
- ② PLATING:
SOLDER TAILS: 150 u"/3.81um Sn Pb
FRAME: 100u "/2.54um NICKEL
CONTACTS: 30u"/.76um GXT OVER 50u"/1.27um Ni
OR 60u"/1.52um GXT OVER 75u"/1.90um Ni.
LEAD FREE OPTION:
SOLDER TAILS: 150 u"/3.81um Sn
FRAME: 100u "/2.54um NICKEL
CONTACTS: 30u"/.76um GXT OVER 50u"/1.27um Ni
OR 60u"/1.52um GXT OVER 75u"/1.90um Ni.
- ③ WHEN CONNECTOR IS MATED WITH OPPOSITE HALF, THE PARALLEL BD. TO BD. HGT. IS .47 ±.01. (APPLYS TO VERT. THRU & SURFACE MT. STYLES)
- ④ THE SOLDER TAILS ON THIS PRODUCT ARE DESIGNED TO BE COMPLIANT IN ORDER TO ACCOMMODATE PRINTED CIRCUIT BOARD DIMENSIONAL VARIATIONS. THEREFORE, HOLDDOWN HARDWARE IS REQUIRED TO SECURE THE CONNECTOR TO THE PRINTED CIRCUIT BOARD FOR MOST TYPES OF SOLDER REFLOW OPERATIONS. FOR FURTHER APPLICATION DATA, INCLUDING HOLE SIZES FOR VARIOUS TYPES OF HARDWARE, SEE TA-932.
- ⑤ DO NOT REMOVE PROCESSING CAP UNTIL SOLDERING IS COMPLETED.
- ⑥ BY ADDING LETTER "H" TO TABULATED P/N, THE OPTIONAL HOLD-DOWNS WILL BE SUPPLIED INTEGRAL W/CONNECTOR. EXAMPLE: XXXX-XXXH (HOLD-DOWN)
- ⑦ PART NUMBERS WITH LF SUFFIX AT THE END ARE LEAD FREE.
- ⑧ THE HOUSING WILL WITHSTAND EXPOSURE TO 260°C PEAK TEMPERATURE FOR 20 SECONDS IN A CONVECTION, INFRA-RED OR VAPOR PHASE REFLOW OVEN.
- ⑨ IF "LF" P/N THE PRODUCT MEETS EUROPEAN UNION DIRECTIVES AND OTHER COUNTRY REGULATION AS DESCRIBED IN GS-22-008.

mat'l. code		surface		tolerance		projection		product family	
-		ISO 1302 ✓		ISO 406		⊕		MICROPAX	
ltr		ecn		no		date		title	
N								MICROPAX .025M SMT PLUG DOUBLE MODULE	
		angles		linear		.XX±.01/.3		INCH/MM	
		0'±2'				.xxx±.005/.13		scale 1:1	
		dr		T. HOUTZ		3/04/93		dwg no	
		enr		M. HAHN		3/04/93		sheet 3 of 3 size	
		chr		M. HAHN		3/04/93		91294 A3	
		appd		M. HAHN		3/04/93		type Product Customer Drawing	
sheet index		revision sheet							