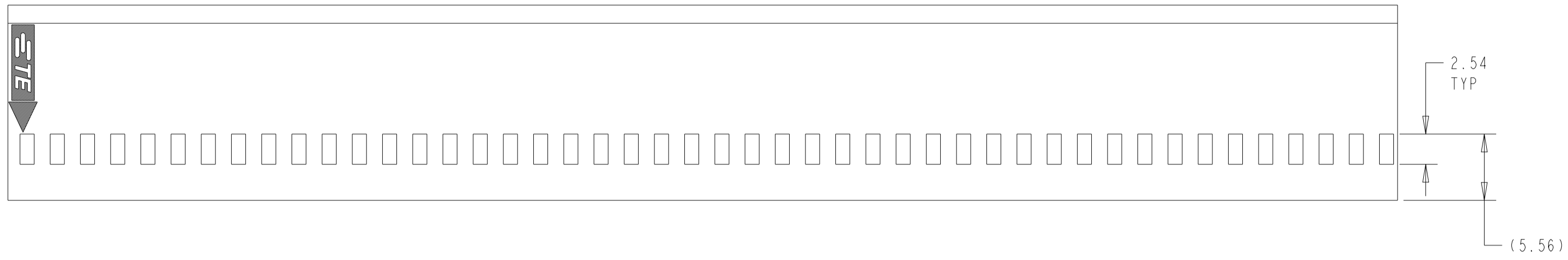
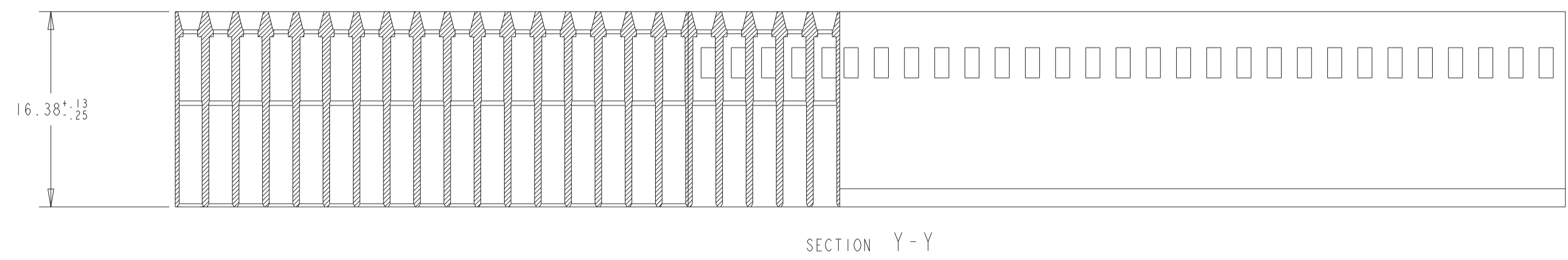
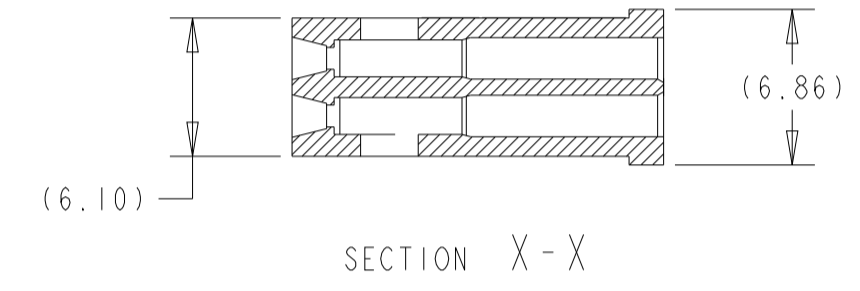
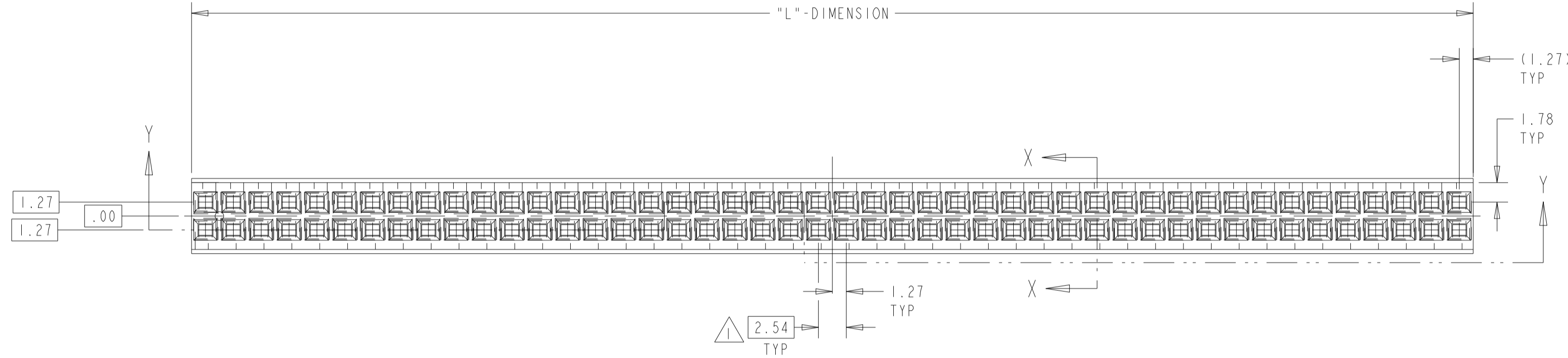


REVISIONS				
P	LTN	DESCRIPTION	DATE	APVD
P1		REVISED PER ECO-09-020932	21AUG09	KK AEG
R		REVISED PER ECR-22-132152	15JUN2022	RK SD

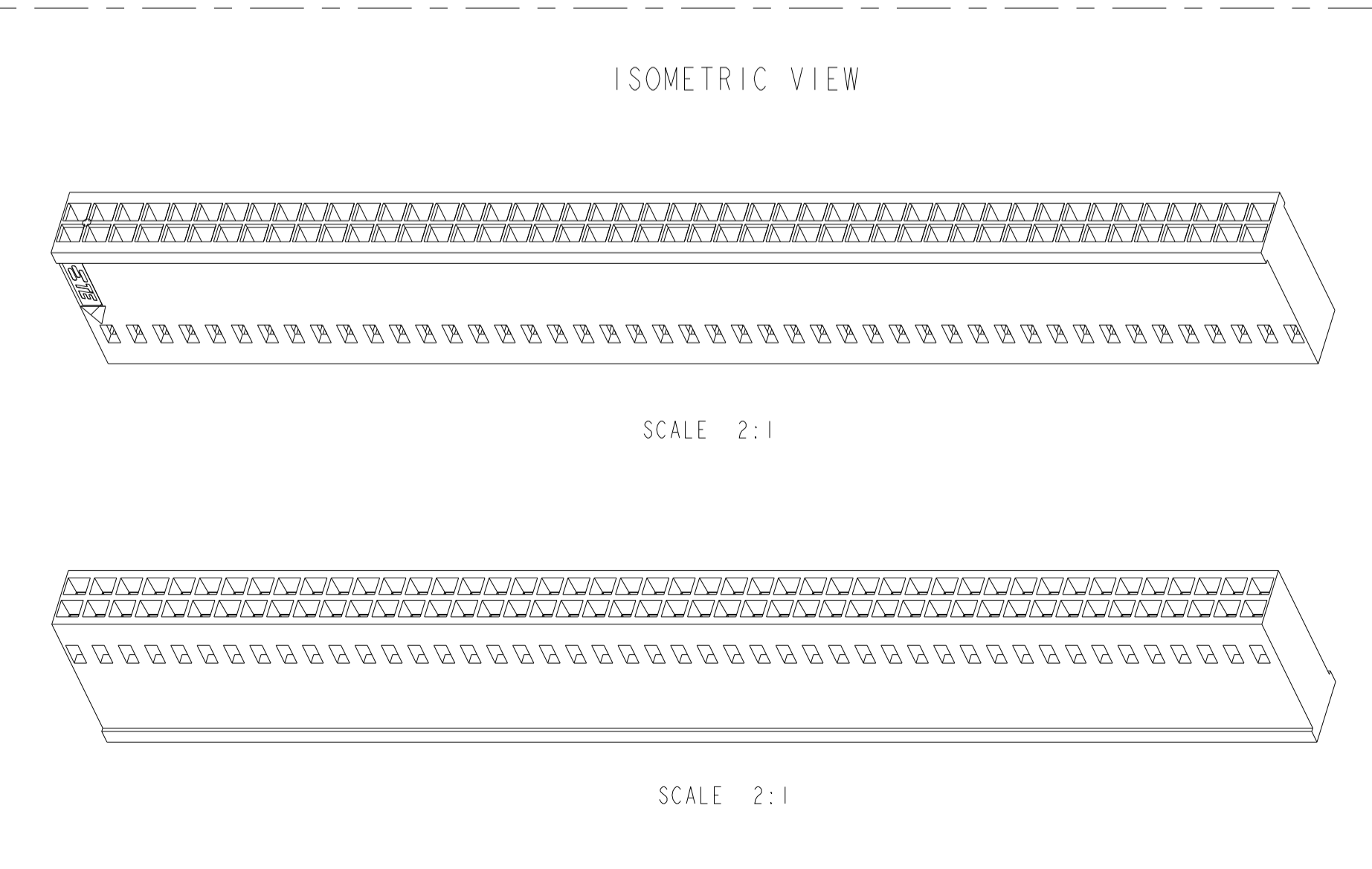


- 1. CAVITY LOCATION DIMENSIONS INCREASE IN INCREMENTS OF 2.54 TOLERANCE NON-CUMULATIVE
- 2. USE EXTRACTION TOOL 91052 TO REMOVE RECEPTAL CONTACTS.
- 3. OBSOLETE PARTS: OBSOLETE CIS STREAMLINING PER D. RENAUD/D. SINISI
- 4. MATERIAL: GLASS FILLED THERMOPLASTIC, UL 94-V0 RATED, COLOR: BLACK
- 5. THE PRODUCT IS IN PROCESS FOR UL RECOGNITION.
- 6. THE PRODUCT IS IN PROCESS FOR QUALIFICATION, AND IS NOT YET QUALIFIED.

LONGEST POSITION SHOWN



"L" DIMENSION	NUMBER OF SPACES	NUMBER OF POSITIONS	PART NUMBER
5.21	1	4	2-86177-5
89.03	34	70	2-86177-4
61.09	23	48	2-86177-3
116.97	45	92	2-86177-2
63.63	24	50	2-86177-1
10.29	3	8	2-86177-0
66.17	25	52	1-86177-9
7.75	2	6	1-86177-8
56.01	21	44	1-86177-7
22.99	8	18	1-86177-6
20.45	7	16	1-86177-5
17.91	6	14	1-86177-4
15.37	5	12	1-86177-3
12.83	4	10	1-86177-2
50.93	19	40	1-86177-1
48.46	18	38	1-86177-0
45.85	17	36	86177-9
43.31	16	34	86177-8
40.77	15	32	86177-7
38.23	14	30	86177-6
35.69	13	28	86177-5
33.15	12	26	86177-4
30.61	11	24	86177-3
28.07	10	22	86177-2
25.53	9	20	86177-1



THIS DRAWING IS A CONTROLLED DOCUMENT.

DIMENSIONS:	TOLERANCES UNLESS OTHERWISE SPECIFIED:	OWN: BOB BOLES B6 07SEP89	CH: J. GESEFORD 23OCT89
mm	0 PLC ±	APVD: J. GESEFORD 23OCT89	NAME: MOD IV CRIMP SNAP-IN CONNECTOR, DOUBLE ROW, 2.54 CENTERS
	1 PLC ±.5	PRODUCT SPEC: -	SIZE: A
	2 PLC ±0.5	APPLICATION SPEC: -	CAGE CODE: 00779
	3 PLC ±0.13	FINISH: -	DRAWING NO: C=86177
	4 PLC ±	ANGLES: ±30°	RESTRICTED TO: -
MATERIAL: 4		WEIGHT: -	CUSTOMER DRAWING

TE Connectivity

SCALE 3:1 SHEET 1 OF 1 REV R