

4

3

2

1

THIS DRAWING IS UNPUBLISHED.

RELEASED FOR PUBLICATION

© COPYRIGHT

ALL RIGHTS RESERVED.

LOC DIST


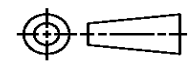
REVISIONS

P	LTR	DESCRIPTION	DATE	DWN	APVD

REPLACED BY OCEAN STYLE APPLICATOR PART NUMBER

FOR REPLACEMENT PARTS FOR APPLICATOR REFER TO ADDITIONAL PAGE(S). SPARE PARTS KIT (IF LISTED) WILL REMAIN AVAILABLE.

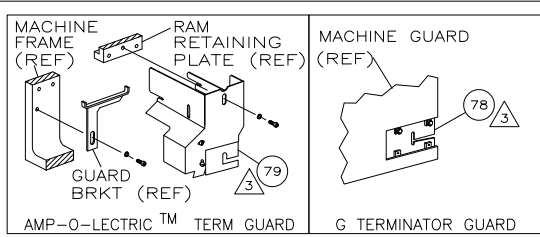
THE REPLACEMENT OCEAN STYLE APPLICATOR HAS THE SAME TERMINATOR/PRESS INTERFACE AS APPLICATOR

THIS DRAWING IS A CONTROLLED DOCUMENT.		DWN	 TE Connectivity		
DIMENSIONS:		CHK			
TOLERANCES UNLESS OTHERWISE SPECIFIED:		APVD	NAME		
 <ul style="list-style-type: none"> 0 PLC ± 1 PLC ± 2 PLC ± 3 PLC ± 4 PLC ± ANGLES ± 		PRODUCT SPEC	RESTRICTED TO		
		APPLICATION SPEC	SIZE	CAGE CODE	DRAWING NO
MATERIAL	FINISH	WEIGHT	A3	C-	
		SCALE	SHEET	OF	REV

THIS DRAWING IS A CONTROLLED DOCUMENT. 687763

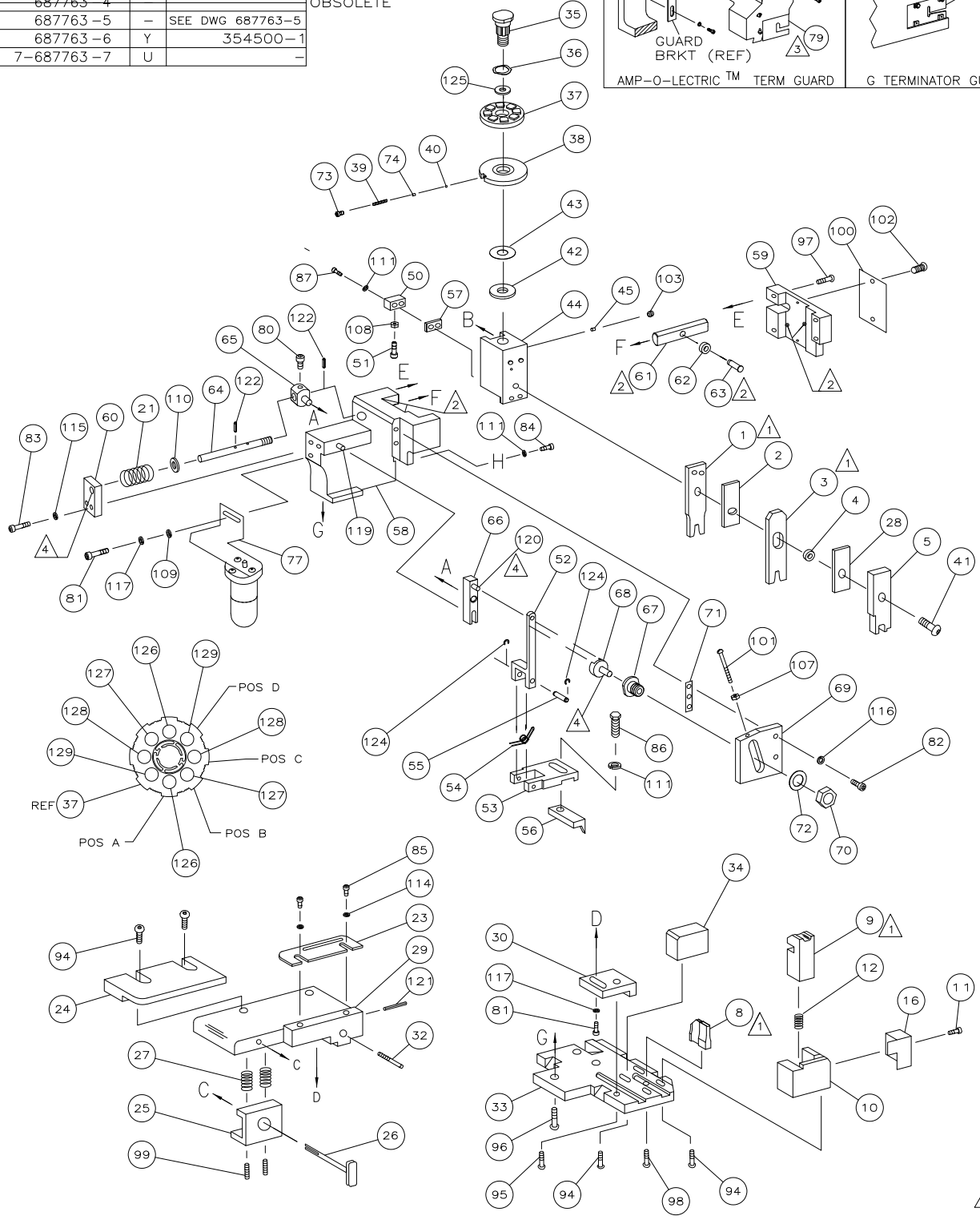
PART NUMBER	REV	FIRST USED
687763-1	Y	122500-1
687763-2	Y	565435-5
687763-3		
687763-4		
687763-5	-	SEE DWG 687763-5
687763-6	Y	354500-1
7-687763-7	U	

SEE DWG 687763-3
OBSOLETE



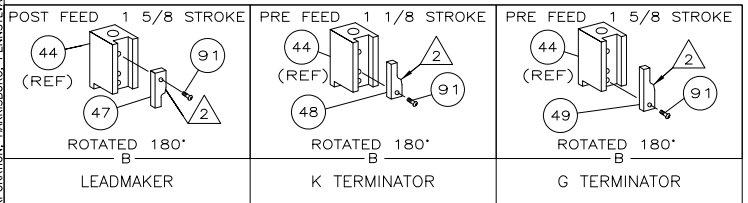
TERMINAL NAME: MATE-N-LOK™ PIN & SOCKET		CRIMPING DATA	
PIN	SOCKET	PAD LTR	CRIMP HEIGHT
61118(B)	61117(B)	A	.069 ±.002 [1.75 ±.05mm]
350218(C)	350217(A)	B	.059 ±.002 [1.5 ±.05mm]
350654(C)	350536(C)	C	.052 ±.002 [1.32 ±.05mm]
350687(C)		D	.047 ±.002 [1.19 ±.05mm]
		CRIMP	SIZE
WIRE		.090	[2.27mm]
INSUL		.130	[3.3mm]
WIRE STRIP LENGTH		TERM APPL SPEC	FEED
.156-.187		△	.430
		APPL INSTRUCTION	SET UP GAGE
		408-8040	458637-1
		LAYOUT	RANGE
			20-14
		TYPE	INSUL
		F	.130 MAX

QTY	REF	DESCRIPTION	ITEM NO
-1	LEADMAKER	MECH POST FEED	-77 SPARE TOOLING KIT
-2	BENCH MODEL K	MECH PRE FEED	
-6	BENCH MODEL G	MECH PRE FEED	



QTY	REF	DESCRIPTION	ITEM NO	
-2	2	2	3-354779-8 PIN, WIRE DISC (.3180)D	129
-2	2	2	2-354779-8 PIN, WIRE DISC (.3130)C	128
-2	2	2	1-354779-2 PIN, WIRE DISC (.3050)B	127
-2	2	2	8-354778-9 PIN, WIRE DISC (.2940)A	126
-1	1	1	986950-1 WASHER, FLAT PRECISION	125
-REF	REF	REF	21045-3 RING, RET "C"(Ø.187)FD FING PIN	124
-REF	REF	REF	5-21028-1 PIN, SLT SPR(Ø.125x.50)ADJ ROD	122
-1	1	1	4-21028-0 PIN, SLT SPR(Ø.093x.75)ST GDE PL	121
-REF	REF	REF	1-21030-1 PIN, DOWEL(Ø.187x.50)LEVER	120
-REF	REF	REF	1-21030-6 PIN, DOWEL(Ø.187x1.25)HOUSING	119
-1	2	1	21024-5 WASHER, LOCK(#10)ADJ BLOCK	118
-REF	REF	REF	21024-5 WASHER, LOCK(#10)ADJ PLATE	117
-REF	REF	REF	21024-5 WASHER, LOCK(#10)FEED GDE ROD	116
-2	2	2	21024-2 WASHER, LOCK(#4)FRONT STP GUIDE	114
-4	4	4	21024-4 WASHER, LOCK(#8)STRIPPER	111
-REF	REF	REF	21899-4 WASHER, FLAT(Ø5/16)SCREW ADJ	110
-1	1	1	21899-2 WASHER, FLAT(NO.10)LUB ASSY	109
-1	1	1	21018-5 NUT, HEX(6-32)	108
-REF	REF	REF	21018-5 NUT, HEX(6-32)FEED ADJ	107
-1	1	1	21009-2 SCR, SKT SET(1/4-20x.25 LW)RAM	103
-2	2	2	21017-2 SCR, DRIVE(#2x.19)ID PLATE	102
-REF	REF	REF	6-23715-5 SCR, PAN HD(6-32x1.50)FEED ADJ	101
-1	1	1	461264-1 PLATE, IDENTIFICATION	100
-2	2	2	5-21006-6 SCR, SET(10-32x.75)DRAG	99
-1	1	1	22733-8 SCR, BHC(8-32x.38 LW)ANVIL	98
-REF	REF	REF	2-21002-9 SCR, BHC(10-32x.75)CAP	97
-REF	REF	REF	2-22733-8 SCR, BHC(1/4-20x.62)HOUSING	96
-REF	REF	REF	2-21002-7 SCR, BHC(10-32x.50)SG ADJ BLOCK	95
-6	6	6	2-21002-2 SCR, BHC(8-32x.50)SHEAR	94
-1	1	1	1-21002-7 SCR, BHC(6-32x.38)CAM	91
-2	2	2	2-21000-7 SCR, SHC(8-32x.50)	87
-1	1	1	2-22603-0 SCR, HEX HD(8-32x.31)FEED FINGER	86
-2	2	2	1-21000-3 SCR, SHC(4-40x.25)F ST GUIDE	85
-1	1	1	2-21000-7 SCR, SHC(8-32x.50)STRIPPER	84
-REF	REF	REF	3-21000-7 SCR, SHC(10-32x.75)FEED ROD GD	83
-REF	REF	REF	3-21000-6 SCR, SHC(10-32x.62)FD ADJ BLK	82
-1	2	1	3-21000-4 SCR, SHC(10-32x.38)SG ADJ BL	81
-REF	REF	REF	3-21000-4 SCR, SHC(10-32x.38)PIVOT BLK	80
-REF	REF	REF	455749-1 GUARD, WINDOW	79
-REF	REF	REF	679532-1 INSERT, GUARD	78
-1	1	1	1-465184-0 LUBRICATOR ASSY	77
-1	1	1	690603-1 SPRING, ASSIST	74
-1	1	1	23030-1 SCR, SHC(6-32x.25 SL)INS DISC	73
-REF	REF	REF	458109-1 WASHER, SPECIAL	72
-REF	REF	REF	690517-1 SPACER	71
-77	-6	-2	-1 U/M PART NO	

QTY	REF	DESCRIPTION	ITEM NO	
-	REF	REF	22594-8 NUT, HEX(1/2-20)	70
-	REF	REF	240628-1 PLATE, ADJUSTMENT	69
-	REF	REF	240626-1 SHAFT, PIVOT	68
-	REF	REF	240633-1 BUSHING	67
-	REF	REF	455680-1 LEVER, INTERMEDIATE	66
-	REF	REF	240629-1 BLOCK, PIVOT	65
-	REF	REF	240632-2 SCREW, ADJ FEED ROD	64
-	REF	REF	240659-3 PIN, CAM ROLLER	63
-	REF	REF	240658-1 ROLLER, CAM	62
-	REF	REF	454398-2 ROD, FEED	61
-	REF	REF	454178-1 GUIDE, FEED ROD	60
-	REF	REF	454220-1 CAP, RAM	59
-	REF	REF	454485-1 HOUSING	58
-	1	1	6-240641-4 SPACER	57
-	1	1	458537-2 PAWL, FEED	56
-	REF	REF	240624-1 PIN, FEED FINGER	55
-	REF	REF	691499-1 SPRING, FEED FINGER	54
-	REF	REF	690541-1 HOLDER, FEED FINGER	53
-	REF	REF	455679-1 LEVER, TERMINAL FEED ARM	52
-	1	1	811242-2 BUMPER, HOLD DOWN	51
-	1	1	690753-1 SPACER, TONKER	50
-	1	-	690602-6 CAM, PRE-FEED 1 5/8 ST	49
-	-	-	690602-5 CAM, PRE-FEED 1 1/8 ST	48
-	-	-	690501-4 CAM, POST-FEED 1 5/8 ST	47
-	1	1	459456-1 APPLICATOR, BASIC (SUBASSY)	46
-	1	1	690191-1 PLUG, NYLON	45
-	1	1	455673-1 RAM	44
-	1	1	690125-1 WASHER, LAMINATED	43
-	1	1	690124-1 WASHER, RAM	42
-	1	1	7-21002-9 BOLT, CRIMPER(5/16x1.00)	41
-	1	1	23241-6 BALL, STEEL	40
-	1	1	690170-1 SPRING, COMPRESSION	39
-	1	1	690142-1 DISC, INSULATION	38
-	1	1	354777-1 WIRE DISC	37
-	1	1	22480-5 WASHER, SPRING	36
-	1	1	690212-1 POST, RAM	35
-	1	1	690786-6 SUPPORT, TERMINAL	34
-	REF	REF	455675-1 PLATE, BASE	33
-	1	1	690432-3 SCREW, ADJUSTMENT	32
-	REF	REF	455689-1 BLOCK, STRIP GUIDE ADJ	30
-	1	1	455671-4 PLATE, STRIP GUIDE	29
-	1	1	1-455888-0 SPACER, FRONT SHEAR DEP	28
-	2	2	1-22284-0 SPRING, DRAG	27
-	1	1	690546-1 LEVER, DRAG RELEASE	26
-	1	1	240792-5 DRAG, TERMINAL	25
-	1	1	6-690504-2 GUIDE, STRIP (REAR)	24
-	1	1	690438-1 GUIDE, STRIP (FRONT)	23
-	-	-	690472-2 STRIPPER	22
-	REF	REF	4-22284-9 SPRING, FEED RETURN	21
-	1	1	691353-1 STRIPPER	19
-	1	1	691667-1 GUARD, CHIP (FRONT)	16
-	1	1	3-22280-3 SPRING, SHEAR	12
-	1	1	690461-1 STOP, SHEAR	11
-	1	1	690459-1 HOLDER, SHEAR (FRONT)	10
-	1	1	454276-1 SHEAR, FLOAT (FRONT)	9
1	1	1	2-690471-9 ANVIL	8
-	1	1	1-455889-4 DEPRESSOR, SHEAR (FRONT)	5
-	1	1	238011-7 SPACER, BLOCK CRIMPER	4
1	1	1	456134-5 CRIMPER, INSULATION	3
-	1	1	455888-5 SPACER, CRIMPER	2
1	1	1	3-456406-3 CRIMPER, WIRE	1



- 1 RECOMMENDED SPARE PARTS.
- 2 GREASE LIGHTLY.
- 3 GUARD MUST BE IN PLACE WHEN OPERATING APPLICATOR IN A BENCH MACHINE.
- 4 LUBRICATE DAILY USING NO. 20 MACHINE OIL.
- 5. ITEMS WITH QTY OF REF SPECIFIED (EXCEPT ITEMS 78 AND 79) ARE USED ON ITEM 46.

△ APPLICATOR SPECIFICATION:
A - 114-1011
B - 114-1012
C - 114-1010

LOC	A
DIST	66

Y	ECR-09-027431	12-2009	MY	TE
P	LTR	REVISION RECORD	DATE	DWN

DIMENSIONS:		TOLERANCES UNLESS OTHERWISE SPECIFIED:	
INCHES	±	0 PLC	±
		1 PLC	±
		2 PLC	±
		3 PLC	±
		4 PLC	±

DWN	D.SALTZER	4/17/95	MATERIAL	-	HEAT TREAT	-
CHK	C.ERISMAN	4-27-95				
APVD	T.BEDDICK	4-27-95				
Tyco Electronics Corporation Harrisburg, PA 17105-3608						
SIDE FEED HDM APPLICATOR						
SCALE	A1	DRAWING NO	687763	SHEET	1 of 1	REV
CUSTOMER ACCESSIBLE PRODUCTION DRAWING						