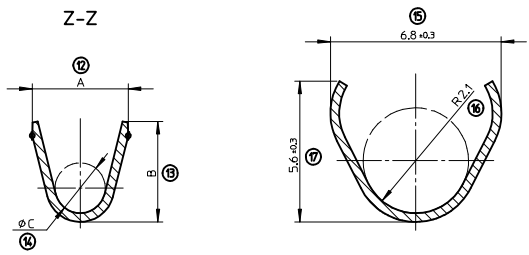


SECTIONS  
Y-Y

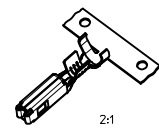


PART SHOWN : 0988981019

PART NUMBER	0988980139	0988981019
CRIMPING RANGE (mm <sup>2</sup> )	0.5 TO 1.0	1.5 TO 2.5
CRIMPING RANGE ID.	1	2
PLATING	PRE-TIN PLATED	
MATERIAL	HIGH CONDUCTIVITY COPPER ALLOY	
PART WEIGHT (g)	0.3582	0.3778
THICKNESS (mm)	0.35	
A ±0.30	2.80	4.10
B ±0.30	2.70	4.40
φC ±0.15	1.30	1.50

- MARKINGS :
- ① - ENGINEERING CONTROL ID.
  - ② - CRIMPING RANGE ID. (SEE CHART BELOW)

- NOTES :
- 1 - SPECIFICATION : AS-98898-002
  - 2 - PACKAGING : PK-98898-001



INSPECTION BALLOON NUMBER LOG				SCALE 10:1		DESIGN UNITS METRIC		FIRST ANGLE PROJECTION	
PER DRAWING REVISION : A									
LAST BALLOON NUMBER USED : 18									
ADDED BALLOON NUMBERS : NONE									
REMOVED BALLOON NUMBERS : NONE									
A FIRST RELEASE									
FIRST RELEASE		QUALITY SYMBOLS		GENERAL TOLERANCES (UNLESS SPECIFIED)		DIMENSION STYLE		TITLE	
EC NO: G2015-0184		▽=0		mm INCH		MM ONLY		UCC 2.8 TERMINAL SWS WIRE VERSION	
DRAWN BY: PBOSSQUAIN		▽=0		4 PLACES ± --- ± ---		DRAWN BY: PBOSSQUAIN		DATE: 2015/04/21	
CHECKED BY: OPLESSIS		▽=0		3 PLACES ± --- ± ---		CHECKED BY: OPLESSIS		DATE: 2015/04/22	
APPROVED BY: JDUCLIOS		▽=0		2 PLACES ± 0.10 ± ---		APPROVED BY: JDUCLIOS		DATE: 2015/04/28	
DESCRIPTION		ANGULAR ± 1 °		1 PLACE ± 0.1 ± ---		MATERIAL NO.		DOCUMENT NO.	
SEE CHART		DRAFT WHERE APPLICABLE MUST REMAIN WITHIN DIMENSIONS		0 PLACE ± 01 ± ---		SEE CHART		SD-98898-200	
A		THIS DRAWING CONTAINS INFORMATION THAT IS PROPRIETARY TO MOLEX INCORPORATED AND SHOULD NOT BE USED WITHOUT WRITTEN PERMISSION		SIZE 1		SHEET NO. 1 OF 1			