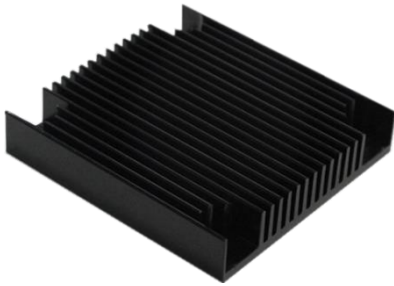


## Heatsinks for Half Brick DC-DC Converters



### Features

- Reduce pressure drop and improve thermal performance of modules
- Compatible with DOSA Pin Converters
- Various sizes and fin orientation
- High performance thermal mounting pads available
- Optional packaging and accessories

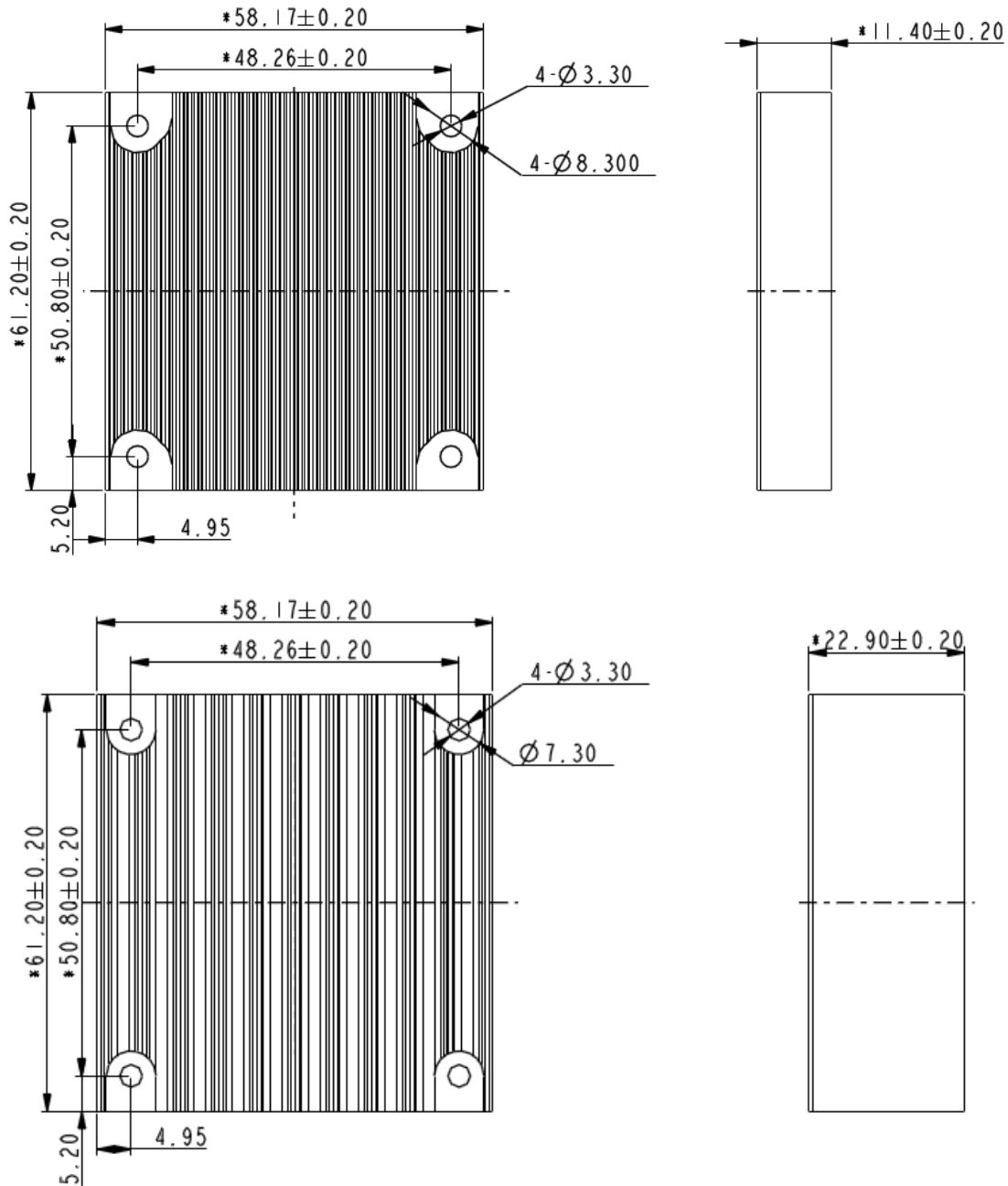
### Part Numbering System

HS	□□□	C	H	A	-	□
Series Name	Height	Orientations	Brick Size	A	-	Optional
Heatsink	114: 11.4mm(0.45") 229: 22.9mm(0.90")	C: Crosswise	H: For half brick converters	A: Version No.	-	Optional packaging and accessories

### Selection Guide

Part No.	Height (mm)	Orientations	Brick Size	Version
HS114CHA	11.4	Crosswise	1/2	A
HS229CHA	22.9	Crosswise	1/2	A

**Mechanical Drawing**



**Notes:**

- 1) All dimensions in mm (inches):  
Tolerances: .xx +/- 0.25 (.xxx +/- 0.010)
- 2) If M3 screws are used to attach a heatsink to the baseplate, the screw length from the surface with fins of the heatsink going down should not exceed 5.5 mm (0.216") max