

Feed-through terminal, Screw connection, Mounting type: Mounting rail TS 35/7.5 and TS 32, Rated cross-section: 2.5 mm², Width: 5 mm, Colour: Red

Business data

| | |
|--|-----------------------|
| Packaging unit | 100 |
| Quantity unit | PC |
| Weight per piece (not including packaging) | 6.6 g |
| Weight per piece (including packaging) | 7.1 g |
| Unit of weight | G |
| Customs number | 85369010 |
| Country of origin | CZ |
| Prio-Article | 1296.2 |
| Product description | Feed-through terminal |

1296.9

RK 2,5 RD

Technical data

Dimensions

| | |
|------------------|---------|
| Length | 48 mm |
| Width | 5 mm |
| Height TS 35/7.5 | 47 mm |
| Height TS 32 | 51.5 mm |

Ratings

| | |
|---|---------------------|
| Rated voltage | 800 V |
| Rated current | 24 A |
| Rated cross-section | 2.5 mm ² |
| Rated impulse voltage | 8 kV |
| Overvoltage category | III |
| Contamination degree | 3 |
| Maximum power dissipation for nominal condition | 0.77 W |

1296.9

RK 2,5 RD

Technical data

Connection data

| | |
|--|---------------------|
| Connection principle | Screw connection |
| Connection position | Lateral |
| Connections | 2 |
| Number of terminals per level | 2 |
| Number of levels | 1 |
| Wire cross-section single-core (rigid) / stranded, min. | 0.2 mm ² |
| Wire cross-section single core (rigid)/stranded, max. | 4 mm ² |
| Wire cross-section stranded, min. | 0.2 mm ² |
| Wire cross-section stranded, max. | 4 mm ² |
| Wire cross-section stranded with wire-end ferrules, min. | 0.2 mm ² |
| Wire cross-section stranded with wire-end ferrules, max. | 2.5 mm ² |
| Wire cross-section AWG, min. | 22 |
| Wire cross-section AWG, max. | 12 |
| Stripping length | 7 mm |
| Screw head | Slotted |
| Screw threading | M 2,5 |
| Tightening torque, min. | 0.4 Nm |
| Tightening torque, max. | 0.8 Nm |

Materials

| | |
|---------------------------|---------------|
| Insulation housing | Polyamide 6.6 |
| Flammability class UL 94 | V-2 |
| Working temperature, min. | -40 °C |
| Working temperature, max. | 105 °C |

Further technical data

| | |
|-------------------------------------|-----------------------------------|
| Mounting type | Mounting rail TS 35/7.5 and TS 32 |
| Gauge plug acc. to EN 60 947-1 | A3 |
| Number of cross-connection channels | 1 |
| End plate required | ✓ |
| Number of test pick-off options | 1 |

Data sheet

1296.9

RK 2,5 RD



Technical data

Print

| | |
|--------|-----|
| Colour | Red |
|--------|-----|

Environmental Product Compliance

| | |
|---------------|-----|
| REACH Conform | yes |
|---------------|-----|

| | |
|----------------------|------------|
| REACH Reference date | 2021-07-08 |
|----------------------|------------|

| | |
|--------------------------------|----|
| REACH Candidate Substance Note | No |
|--------------------------------|----|

| | |
|--------------|-----|
| RoHS Conform | yes |
|--------------|-----|

1296.9

RK 2,5 RD

Approvals

CSAus approval

| | |
|------------------------|--------------|
| CSAus File Number | 042110_0_000 |
| CSAus approval | UL 1059 |
| CSAus approval granted | yes |

UL Recognized

| | |
|---|-----------|
| UL File Number | E95701 |
| UL approval | UL 1059 |
| UL Usegroup B: rated voltage | 600 V |
| UL Usegroup B: rated current | 20 A |
| UL Usegroup C: rated voltage | 600 V |
| UL Usegroup C: rated current | 20 A |
| UL wire cross-section single-core (rigid) AWG, min. | 22 |
| UL wire cross-section single-core (rigid) AWG, max. | 12 |
| UL wire cross-section stranded AWG, min. | 22 |
| UL wire cross-section stranded AWG, max. | 12 |
| UL torque | 5.3 Lb In |
| UL wire material | Cu |
| UL factory wiring | yes |
| UL field wiring | yes |
| UL Recognized | yes |

1296.9

RK 2,5 RD

Approvals

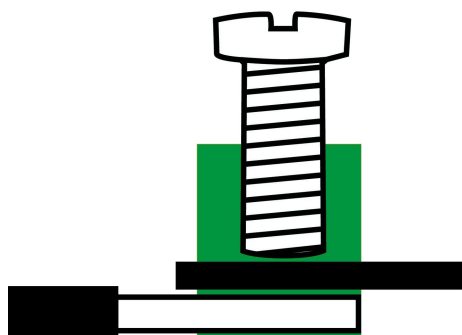
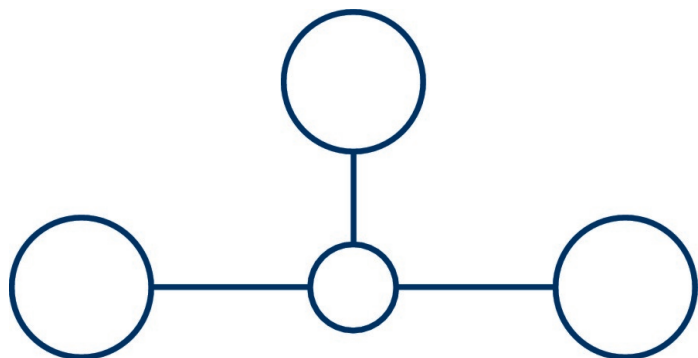
cUL Recognized

| | |
|--|--------------|
| cUL File Number | E95701 |
| cUL approval | C22.2 No 158 |
| cUL Usegroup B: rated voltage | 600 V |
| cUL Usegroup B: rated current | 20 A |
| cUL Usegroup C: rated voltage | 600 V |
| cUL Usegroup C: rated current | 20 A |
| cUL wire cross-section single-core (rigid) AWG, min. | 22 |
| cUL wire cross-section single-core (rigid) AWG, max. | 12 |
| cUL wire cross-section stranded AWG, min. | 22 |
| cUL wire cross-section stranded AWG, max. | 12 |
| cUL torque | 5.3 Nm |
| cUL wire material | Cu |
| cUL Recognized | yes |

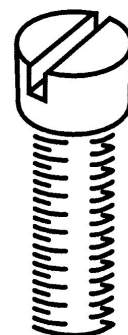
Standards and regulations

| | |
|----------------------|----------------|
| EAC approval | TR ZU 004/2011 |
| EAC approval granted | yes |

Media



M2.5



Accessories

1296.9

RK 2,5 RD

Cover



Cover, Length: 20 mm, Width: 24 mm,
Colour: Yellow

General order data

| Product number: | Article name | GTIN (EAN) | Packaging unit |
|-----------------|----------------|---------------|----------------|
| 2713.0 | AD 4/20/B/E YE | 4044211054540 | 500 ST |



Cover, Length: 26.5 mm, Width: 5 mm,
Colour: White

General order data

| Product number: | Article name | GTIN (EAN) | Packaging unit |
|-----------------|--------------|---------------|----------------|
| 2962.0 | AD 1/5 WH | 4044211056919 | 500 ST |



Cover, Length: 20 mm, Width: 24 mm,
Colour: Yellow

General order data

| Product number: | Article name | GTIN (EAN) | Packaging unit |
|-----------------|--------------|---------------|----------------|
| 2712.0 | AD 4/20/B YE | 4044211054533 | 500 ST |

Creation date 25.11.2021 07:50:21
Subject to technical changes

1296.9

RK 2,5 RD

Cover

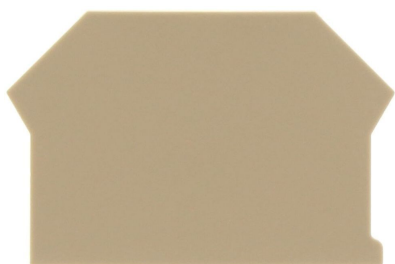


Cover, Length: 26.5 mm, Width: 5 mm,
Colour: Yellow

General order data

| Product number: | Article name | GTIN (EAN) | Packaging unit |
|-----------------|--------------|---------------|----------------|
| 2952.0 | AD 1/5/B YE | 4044211056803 | 500 ST |

End plate



End plate, Width: 1.5 mm, Colour: Beige

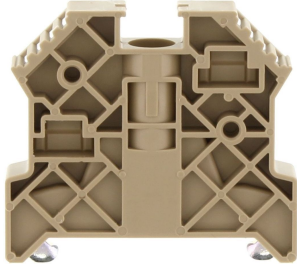
General order data

| Product number: | Article name | GTIN (EAN) | Packaging unit |
|-----------------|--------------|---------------|----------------|
| 2001.2 | AP 2,5-10 BG | 4044211047979 | 500 ST |

1296.9

RK 2,5 RD

End stop



End stop, Mounting type: Mounting rail TS 35/7.5, Width: 9.5 mm, Colour: Beige

General order data

| Product number: | Article name | GTIN (EAN) | Packaging unit |
|-----------------|---------------|---------------|----------------|
| 2828.0 | ES 35/K/ST BG | 4044211055547 | 500 ST |

1296.9

RK 2,5 RD

Cross-connector



Cross-connector, No. of poles: 4, Mounting type: Can be screwed on, Width: 19.3 mm, Rated cross-section: 2.5 mm², Colour: natural

General order data

| Product number: | Article name | GTIN (EAN) | Packaging unit |
|-----------------|--------------|---------------|----------------|
| 2569.0 | Q 4 | 4044211053598 | 500 ST |



Cross-connector, No. of poles: 10, Mounting type: Can be screwed on, Width: 49.9 mm, Rated cross-section: 2.5 mm², Colour: natural

General order data

| Product number: | Article name | GTIN (EAN) | Packaging unit |
|-----------------|--------------|---------------|----------------|
| 2570.0 | Q 10 | 4044211053604 | 500 ST |



Cross-connector, No. of poles: 3, Mounting type: Can be screwed on, Width: 14.2 mm, Rated cross-section: 2.5 mm², Colour: natural

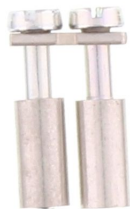
General order data

| Product number: | Article name | GTIN (EAN) | Packaging unit |
|-----------------|--------------|---------------|----------------|
| 2568.0 | Q 3 | 4044211053581 | 500 ST |

1296.9

RK 2,5 RD

Cross-connector

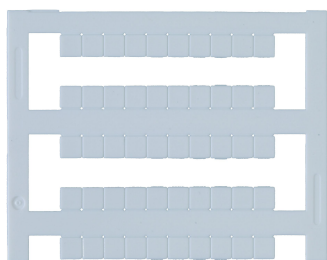


Cross-connector, No. of poles: 2, Mounting type: Can be screwed on, Width: 9.1 mm, Rated cross-section: 2.5 mm², Colour: natural

General order data

| Product number: | Article name | GTIN (EAN) | Packaging unit |
|-----------------|--------------|---------------|----------------|
| 2567.0 | Q 2 | 4044211053574 | 500 ST |

Quick marking



Terminal marker / Pocket Maxicard, Length: 5 mm, Width: 5 mm, Colour: White

General order data

| Product number: | Article name | GTIN (EAN) | Packaging unit |
|-----------------|----------------|---------------|----------------|
| 4600.7 | PMC SB 5/50 WH | 4044211088903 | 500 ST |

1296.9

RK 2,5 RD

Screwdriver



Screwdriver with bare blade, Colour: Black-grey

General order data

| Product number: | Article name | GTIN (EAN) | Packaging unit |
|-----------------|--------------|---------------|----------------|
| 1085.0 | SDB 0,5x3,0 | 4044211014643 | 500 ST |

Test adapters



Test adapter, Length: 37.3 mm, Pitch size: 5 mm, Colour: Beige

General order data

| Product number: | Article name | GTIN (EAN) | Packaging unit |
|-----------------|--------------|---------------|----------------|
| 2812.0 | TA 5/1/ST | 4044211055394 | 500 ST |

1296.9

RK 2,5 RD

Insulation plate

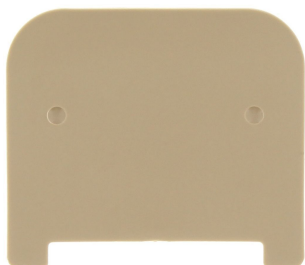


Insulation plate, Colour: Beige

General order data

| Product number: | Article name | GTIN (EAN) | Packaging unit |
|-----------------|--------------|---------------|----------------|
| 2566.2 | TRS 3 BG | 4044211053567 | 500 ST |

Partition plate



Partition plate, Width: 1.5 mm, Colour: Beige

General order data

| Product number: | Article name | GTIN (EAN) | Packaging unit |
|-----------------|--------------|---------------|----------------|
| 2002.2 | TW 2,5-10 BG | 4044211048044 | 500 ST |