

PART STATUS	PART NO. (PACKED IN CARTON)	CKT SIZE	CONTACTS LUBRICATION
TOOLED	87537-8816	68	YES
TOOLED	87537-8810	68	NIL

OBS TIN/LEAD P/N
 EC NO: S2006-0729
 DRWING: LONG 2006/02/27
 CHKD: SHONG 2006/02/27
 APPR: KCLING 2006/02/28

QUALITY SYMBOLS
 $\nabla = 0$
 $\nabla = 2$

GENERAL TOLERANCES (UNLESS SPECIFIED)

	mm	INCH
4 PLACES	\pm ---	\pm ---
3 PLACES	\pm ---	\pm ---
2 PLACES	± 0.25	\pm ---
1 PLACE	\pm ---	\pm ---

ANGULAR $\pm 3^\circ$

DRAFT WHERE APPLICABLE
 MUST REMAIN WITHIN DIMENSIONS

DIMENSION STYLE
 MM ONLY

DRAWN BY: PTLIM
 DATE: 1999/01/05

CHECKED BY: SQUEK
 DATE: 1999/01/25

APPROVED BY: KCLING
 DATE: 1999/01/25

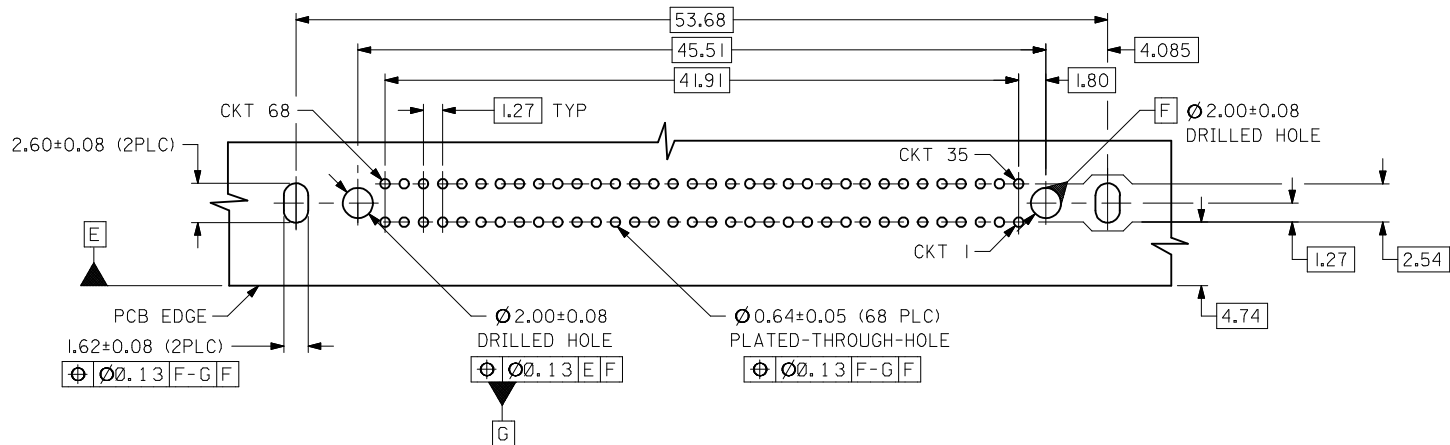
MATERIAL NO. SEE TABLE

SCALE: NTS
 DESIGN UNITS: METRIC
 THIRD ANGLE PROJECTION

TITLE: EBBI, RCPT., RVS-BLND-M
 1.27MM CTR., 68 CKTS, BTB
 7.5MM HT., R/A

MOLEX INCORPORATED
 DOCUMENT NO. SD-87537-005
 SHEET NO. 1 OF 2

THIS DRAWING CONTAINS INFORMATION THAT IS PROPRIETARY TO MOLEX INCORPORATED AND SHOULD NOT BE USED WITHOUT WRITTEN PERMISSION

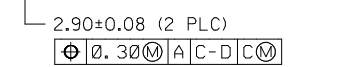
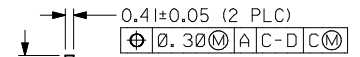
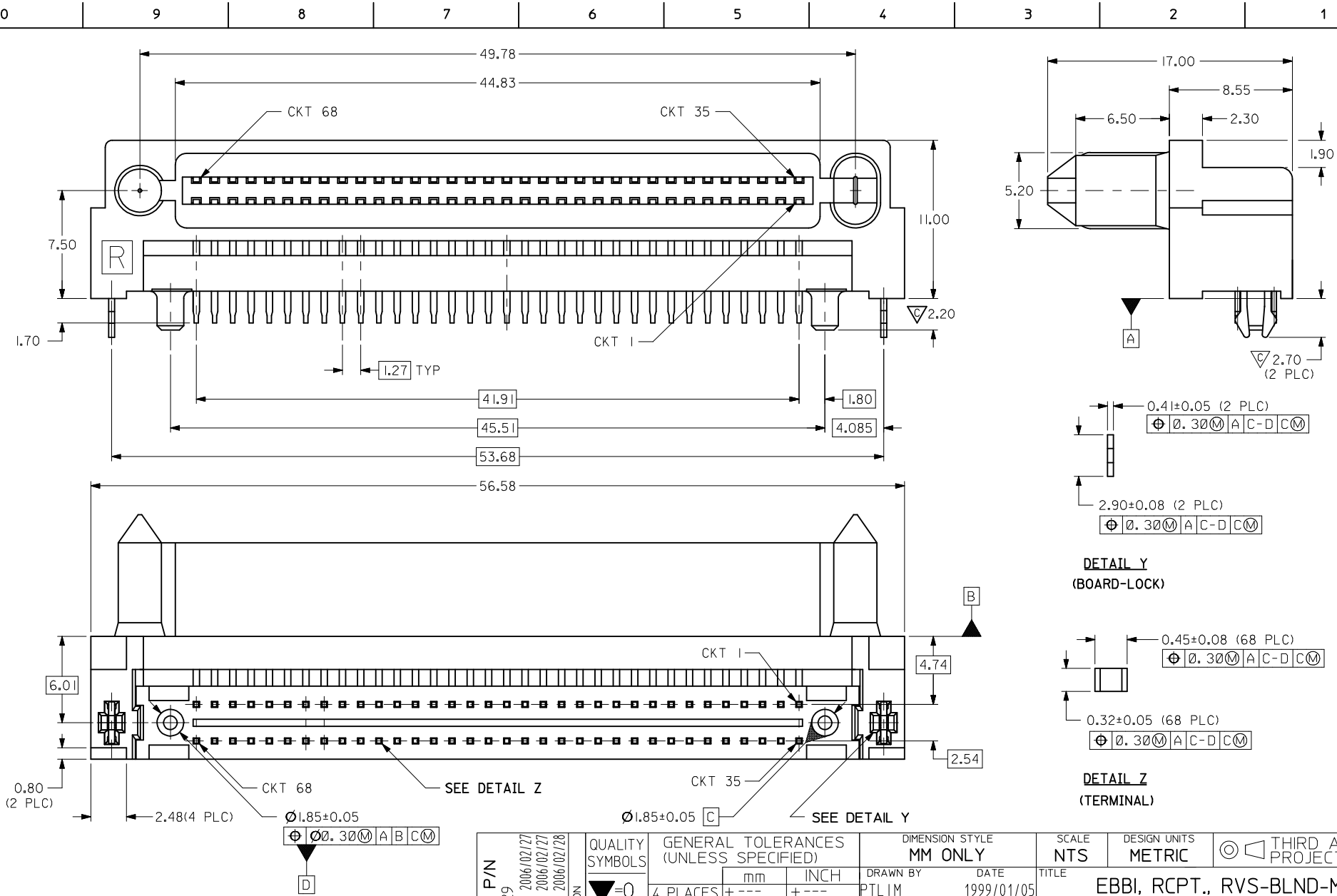


RECOMMENDED PC BOARD LAYOUT \triangle
COMPONENT SIDE

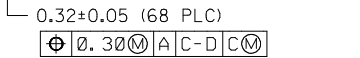
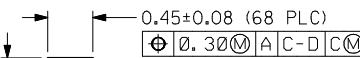
NOTES:

- 1 MATERIALS:
HOUSING - HIGH TEMPERATURE THERMOPLASTIC, GLASS FILLED, UL94V-0, COLOR : BLACK
TERMINAL - COPPER ALLOY
- 2 PLATING:
0.76 μ m MIN. GOLD IN SELECTIVE CONTACT AREA AND 2.54 μ m MIN. TIN IN SOLDER TAIL AREA, BOTH OVER 1.27 μ m MIN. NICKEL.
3. PRODUCT SPECIFICATION : PS-87537-0001
- \triangle RECOMMENDED P.C. BOARD THICKNESS IS 1.20+/-0.05MM.
- 5 CIRCUIT #58 TO BE RECESSED 0.50mm BEHIND ALL OTHER CONTACTS.
- \triangle PART IS LUBRICATED AT TERMINAL CONTACTS TO MINIMISE UNMATE FORCE.

OBS TIN/LEAD P/N EC NO: S2006-0729 DRWN:MLONG 2006/02/27 CHKD:SHONG 2006/02/27 APPR:KCLING 2006/02/28	DESCRIPTION	QUALITY SYMBOLS	GENERAL TOLERANCES (UNLESS SPECIFIED)		DIMENSION STYLE MM ONLY		SCALE NTS	DESIGN UNITS METRIC	THIRD ANGLE PROJECTION		
		$\nabla=0$		mm	INCH	DRAWN BY PTLIM	DATE 1999/01/05	TITLE EBBI, RCPT., RVS-BLND-M 1.27MM CTR, 68 CKTS, BTB 7.5MM HT., R/A			
		$\nabla=0$	4 PLACES	± ---	± ---	CHECKED BY SQUEK	DATE 1999/01/25	APPROVED BY KCLING			
			3 PLACES	± ---	± ---	DATE 1999/01/25	MATERIAL NO. SEE TABLE				
		2 PLACES	± 0.25	± ---	APPROVED BY KCLING		DATE 1999/01/25	DOCUMENT NO. SD-87537-005		SHEET NO. 2 OF 2	
		1 PLACE	± ---	± ---	ANGULAR ± 3 °		THIS DRAWING CONTAINS INFORMATION THAT IS PROPRIETARY TO MOLEX INCORPORATED AND SHOULD NOT BE USED WITHOUT WRITTEN PERMISSION				
		DRAFT WHERE APPLICABLE MUST REMAIN WITHIN DIMENSIONS		SIZE A3							



DETAIL Y
(BOARD-LOCK)



DETAIL Z
(TERMINAL)

PART STATUS	PART NO. (PACKED IN CARTON)	CKT SIZE	CONTACTS LUBRICATION
TOOLED	87537-8816	68	YES
TOOLED	87537-8810	68	NIL

OBS TIN/LEAD P/N
EC NO: S2006-0729
DRAWN: LONG 2006/02/27
CHKD: SHONG 2006/02/27
APPR: KCLING 2006/02/28

QUALITY SYMBOLS
▽=0
∇=2

GENERAL TOLERANCES (UNLESS SPECIFIED)

	mm	INCH
4 PLACES	± ---	± ---
3 PLACES	± ---	± ---
2 PLACES	± 0.25	± ---
1 PLACE	± ---	± ---

ANGULAR ± 3 °

DRAFT WHERE APPLICABLE
MUST REMAIN
WITHIN DIMENSIONS

DIMENSION STYLE
MM ONLY

DRAWN BY: PTLIM
DATE: 1999/01/05

CHECKED BY: SQUEK
DATE: 1999/01/25

APPROVED BY: KCLING
DATE: 1999/01/25

MATERIAL NO. SEE TABLE

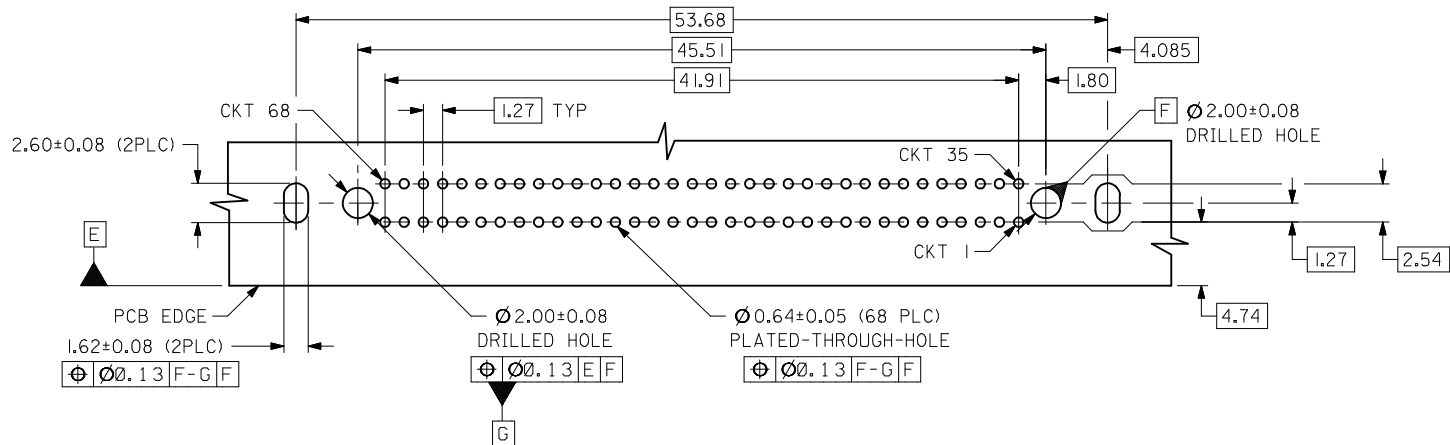
SCALE: NTS
DESIGN UNITS: METRIC
THIRD ANGLE PROJECTION

TITLE: EBBI, RCPT., RVS-BLND-M
1.27MM CTR., 68 CKTS, BTB
7.5MM HT., R/A

MOLEX MOLEX INCORPORATED

DOCUMENT NO. SD-87537-005
SHEET NO. 1 OF 2

THIS DRAWING CONTAINS INFORMATION THAT IS PROPRIETARY TO MOLEX INCORPORATED AND SHOULD NOT BE USED WITHOUT WRITTEN PERMISSION



RECOMMENDED PC BOARD LAYOUT \triangle
COMPONENT SIDE

NOTES:

- 1 MATERIALS:
HOUSING - HIGH TEMPERATURE THERMOPLASTIC, GLASS FILLED, UL94V-0, COLOR : BLACK
TERMINAL - COPPER ALLOY
- 2 PLATING:
0.76 μ m MIN. GOLD IN SELECTIVE CONTACT AREA AND 2.54 μ m MIN. TIN IN SOLDER TAIL AREA, BOTH OVER 1.27 μ m MIN. NICKEL.
3. PRODUCT SPECIFICATION : PS-87537-0001
- \triangle RECOMMENDED P.C. BOARD THICKNESS IS 1.20+/-0.05MM.
- 5 CIRCUIT #58 TO BE RECESSED 0.50mm BEHIND ALL OTHER CONTACTS.
- \triangle PART IS LUBRICATED AT TERMINAL CONTACTS TO MINIMISE UNMATE FORCE.

OBS TIN/LEAD P/N EC NO: S2006-0729 DRWN:MLONG 2006/02/27 CHKD:SHONG 2006/02/27 APPR:KCLING 2006/02/28	DESCRIPTION	QUALITY SYMBOLS	GENERAL TOLERANCES (UNLESS SPECIFIED)		DIMENSION STYLE MM ONLY		SCALE NTS	DESIGN UNITS METRIC	THIRD ANGLE PROJECTION		
		$\nabla=0$		mm	INCH	DRAWN BY PTLIM	DATE 1999/01/05	TITLE EBBI, RCPT., RVS-BLND-M 1.27MM CTR, 68 CKTS, BTB 7.5MM HT., R/A			
		$\nabla=0$	4 PLACES	± ---	± ---	CHECKED BY SQUEK	DATE 1999/01/25	APPROVED BY KCLING 1999/01/25			
			3 PLACES	± ---	± ---	MATERIAL NO. SEE TABLE		DOCUMENT NO. SD-87537-005		SHEET NO. 2 OF 2	
		2 PLACES	± 0.25	± ---	SIZE A3		THIS DRAWING CONTAINS INFORMATION THAT IS PROPRIETARY TO MOLEX INCORPORATED AND SHOULD NOT BE USED WITHOUT WRITTEN PERMISSION				
		1 PLACE	± ---	± ---	ANGULAR ± 3 °						
		DRAFT WHERE APPLICABLE MUST REMAIN WITHIN DIMENSIONS									