

10 9 8 7 6 5 4 3 2 1

F

E

D

C

B

A

F

E

D

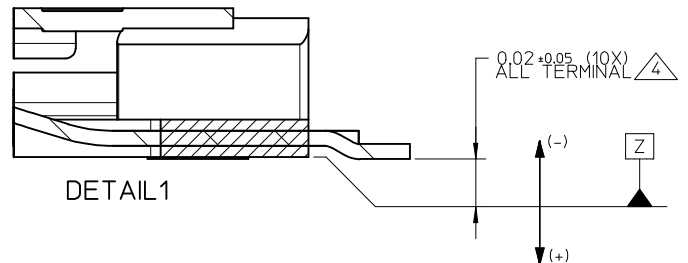
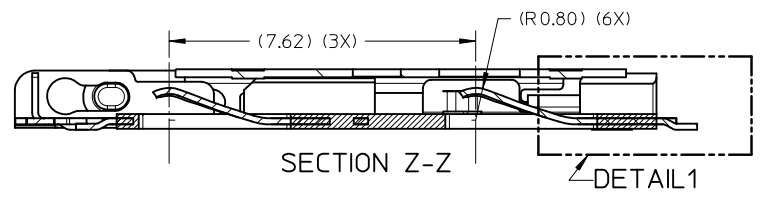
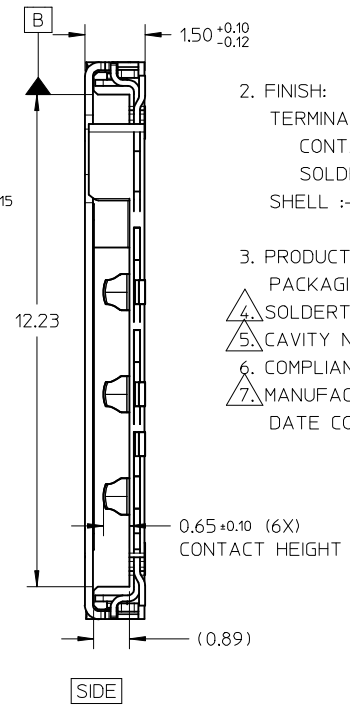
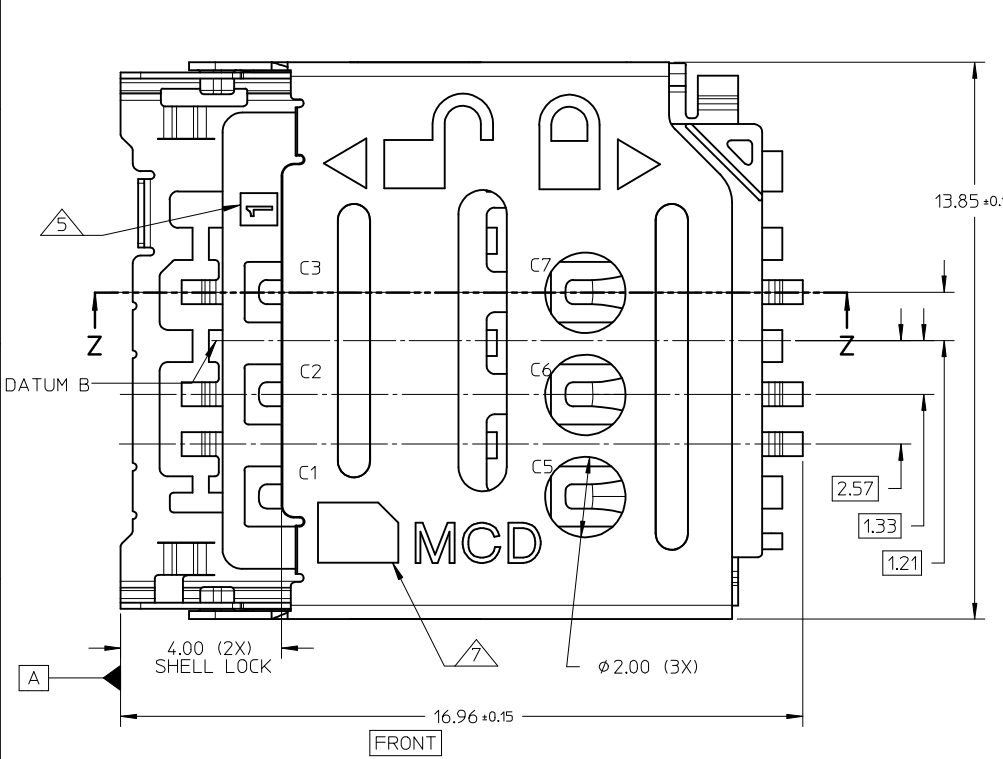
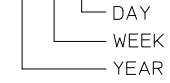
C

B

A

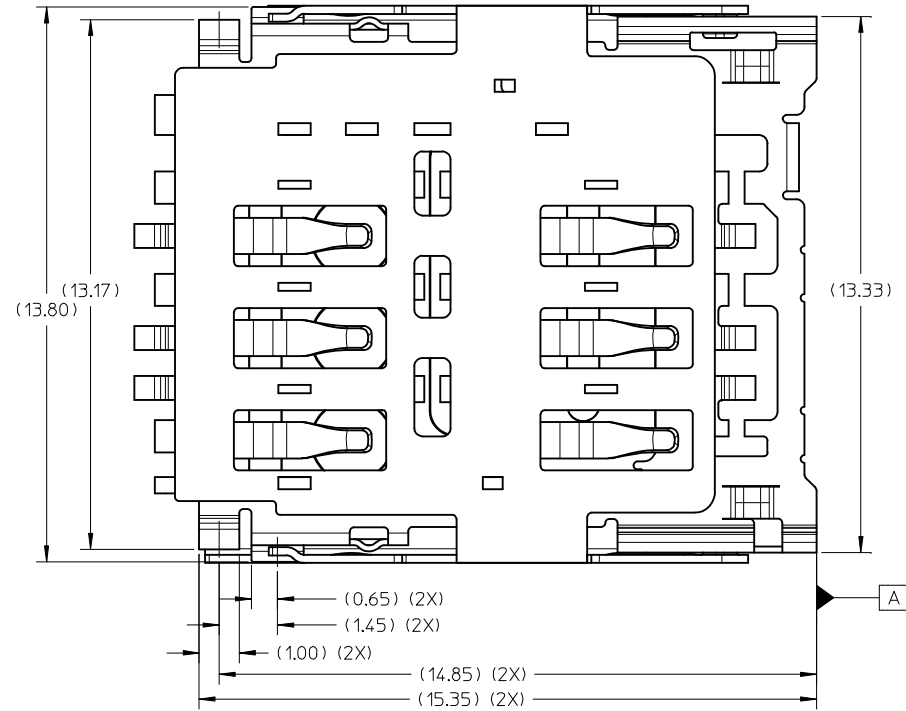
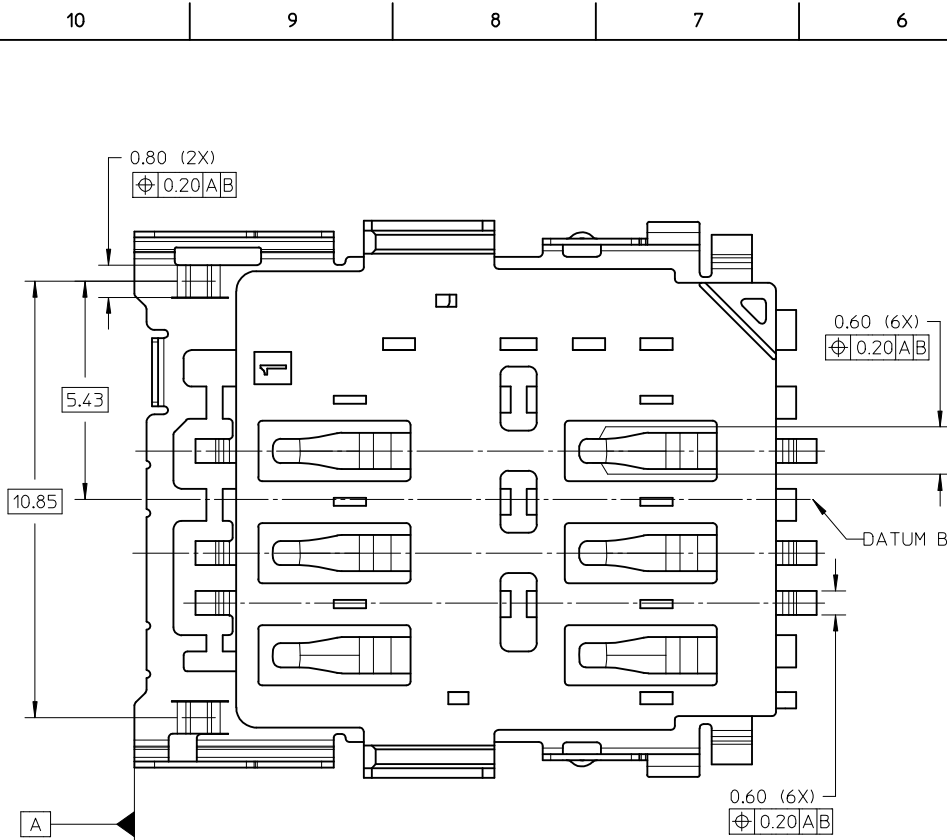
NOTE:

1. MATERIAL: HOUSING : LIQUID CRYSTAL POLYMER,
GLASS FILLED, UL94-V0, COLOR: BLACK
TERMINAL : PHOSPHOR BRONZE
METAL SHELL : STAINLESS STEEL
2. FINISH:
TERMINAL:-
CONTACT : 0.38µM MIN. GOLD OVER 1.27µM MIN NICKEL UNDERPLATE.
SOLDERTAIL: 1.27µM MIN. MATTE TIN OVER 1.27µM MIN NICKEL UNDERPLATE.
SHELL :-
: NO PLATING
3. PRODUCT SPECIFICATION: PS-78800-001
PACKAGING SPECIFICATION: PK-78800-001
4. SOLDERTAIL (10X) COPLANARITY 0.08MM MAX (BEFORE REFLOW).
5. CAVITY NUMBER LOCATION.
6. COMPLIANT TO RoHS DIRECTIVE 2011/65/EU AND ELV DIRECTIVE 2000/53/EC
7. MANUFACTURER ID AND DATE CODE LOCATION.
DATE CODE ON SHELL : * * * * *



UPDATE VIEWS EC NO: S2015-0120 DRW: EANG 2015/06/26 CHKD: JTAN02 2015/08/26 APPR: KHL IM 2015/08/27	QUALITY SYMBOLS $F_A=0$ $F_C=0$ $F_P=0$	GENERAL TOLERANCES (UNLESS SPECIFIED)		DIMENSION STYLE MM ONLY		SCALE NTS	DESIGN UNITS METRIC	THIRD ANGLE PROJECTION		
				DRAWN BY EANG	DATE 2012/11/29	TITLE SALES DRAWING MICRO SIM CONNECTOR 1.50MM HEIGHT, HINGED				
				CHECKED BY JTAN02	DATE 2013/03/11	APPROVED BY KHL IM				
				MATERIAL NO. 788000001	DATE 2013/03/14	DOCUMENT NO. SD-78800-001	SHEET NO. 1 OF 3			
DRAFT WHERE APPLICABLE MUST REMAIN WITHIN DIMENSIONS		ANGULAR ± 3 °		THIS DRAWING CONTAINS INFORMATION THAT IS PROPRIETARY TO MOLEX INCORPORATED AND SHOULD NOT BE USED WITHOUT WRITTEN PERMISSION						

9 8 7 6 5 4 3 2 1



BOTTOM VIEW

UPDATE VIEWS IEC NO: S2015-0120 DRW: EANG CH: KD: JTAN02 APPR: KHL IM	2015/06/26 2015/08/26 2015/08/27	QUALITY SYMBOLS $\nabla_F = 0$ $\nabla_E = 0$ $\nabla_D = 0$	GENERAL TOLERANCES (UNLESS SPECIFIED)		DIMENSION STYLE	SCALE	DESIGN UNITS	THIRD ANGLE PROJECTION	
					MM ONLY	NTS	METRIC		
					DRAWN BY	DATE	TITLE		
					CHECKED BY	DATE	SALES DRAWING MICRO SIM CONNECTOR 1.50MM HEIGHT, HINGED		
A	REV DESCRIPTION	4 PLACES \pm --- \pm --- 3 PLACES \pm --- \pm --- 2 PLACES ± 0.20 \pm --- 1 PLACE \pm --- \pm --- 0 PLACE \pm --- \pm ---		EANG 2012/11/29 JTAN02 2013/03/11 KHL IM 2013/03/14		molex		SHEET NO. 2 OF 3	
		ANGULAR $\pm 3^\circ$ DRAFT WHERE APPLICABLE MUST REMAIN WITHIN DIMENSIONS		MATERIAL NO. 788000001		DOCUMENT NO. SD-78800-001			
		THIS DRAWING CONTAINS INFORMATION THAT IS PROPRIETARY TO MOLEX INCORPORATED AND SHOULD NOT BE USED WITHOUT WRITTEN PERMISSION							

10 9 8 7 6 5 4 3 2 1

F

E

D

C

B

A

F

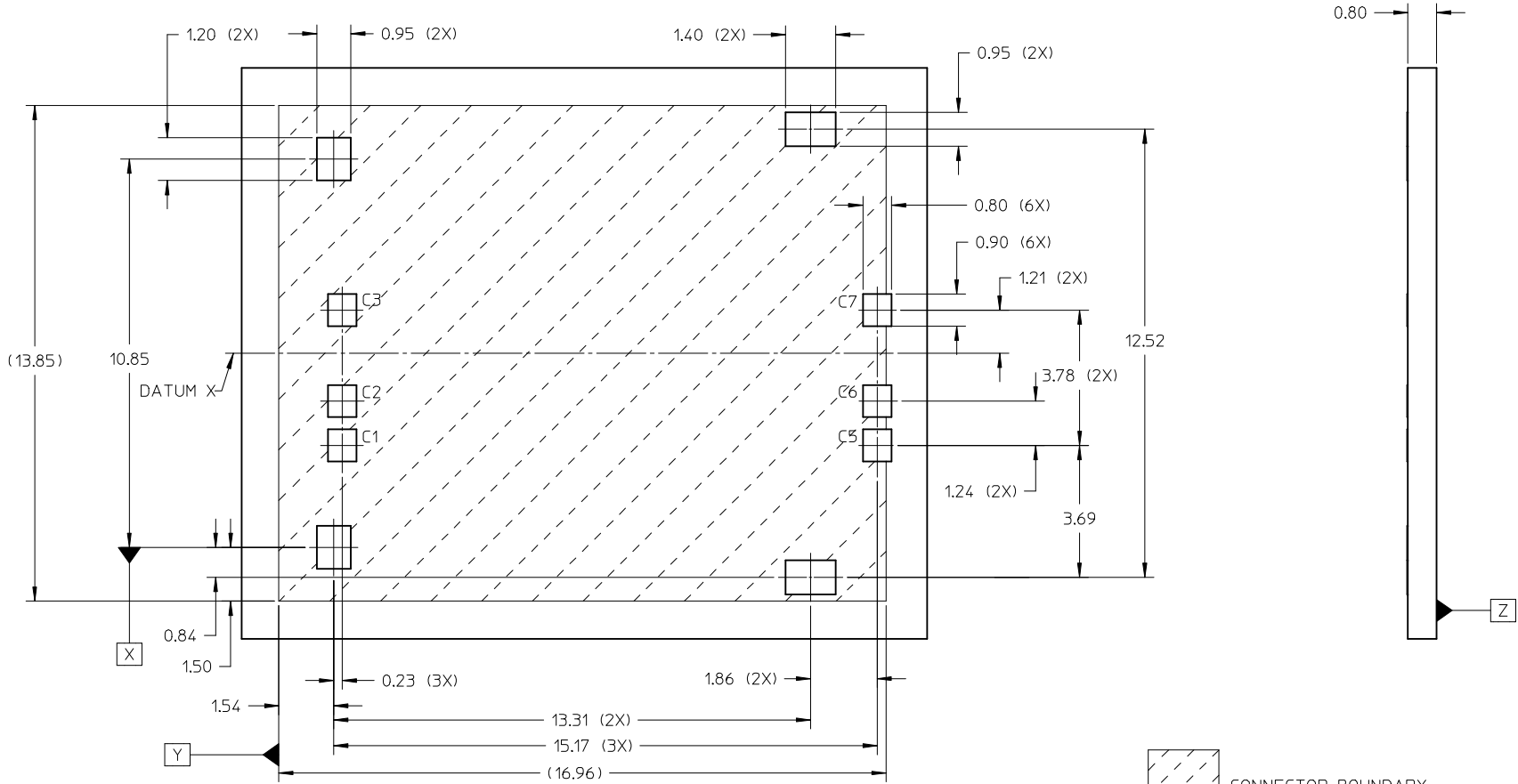
E

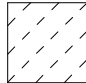
D

C

B

A



 CONNECTOR BOUNDARY
 - - - - - KEEP OUT ZONE

RECOMMENDED PCB LAYOUT
 PWB TOLERANCE: ±0.05MM

9 8 7 6 5 4 3 2 1

UPDATE VIEWS EC NO: S2015-0120 DRW: EANG CHKD: JTAN02 APPR: KHL IM	2015/06/26 2015/08/26 2015/08/27	DESCRIPTION A	QUALITY SYMBOLS	GENERAL TOLERANCES (UNLESS SPECIFIED)	DIMENSION STYLE	SCALE	DESIGN UNITS	THIRD ANGLE PROJECTION
			$\nabla_A = 0$ $\nabla_C = 0$ $\nabla_P = 0$	mm INCH 4 PLACES ± --- ± --- 3 PLACES ± --- ± --- 2 PLACES ± 0.20 ± --- 1 PLACE ± --- ± --- 0 PLACE ± --- ± ---	MM ONLY	NTS	METRIC	
			ANGULAR ± 3 ° DRAFT WHERE APPLICABLE MUST REMAIN WITHIN DIMENSIONS	DRAWN BY: EANG CHECKED BY: JTAN02 APPROVED BY: KHL IM MATERIAL NO.: 788000001	DATE: 2012/11/29 DATE: 2013/03/11 DATE: 2013/03/14	TITLE	SALES DRAWING MICRO SIM CONNECTOR 1.50MM HEIGHT, HINGED	DOCUMENT NO.: SD-78800-001 SHEET NO.: 3 OF 3
			THIS DRAWING CONTAINS INFORMATION THAT IS PROPRIETARY TO MOLEX INCORPORATED AND SHOULD NOT BE USED WITHOUT WRITTEN PERMISSION					