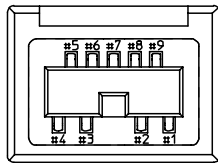
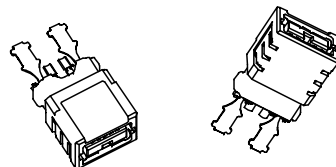
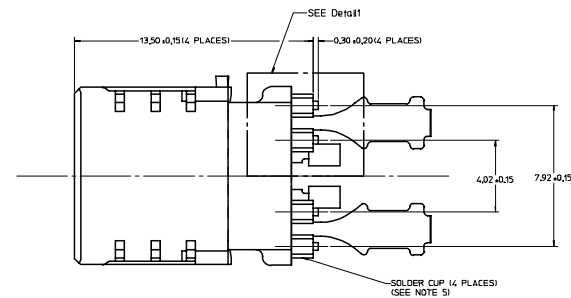
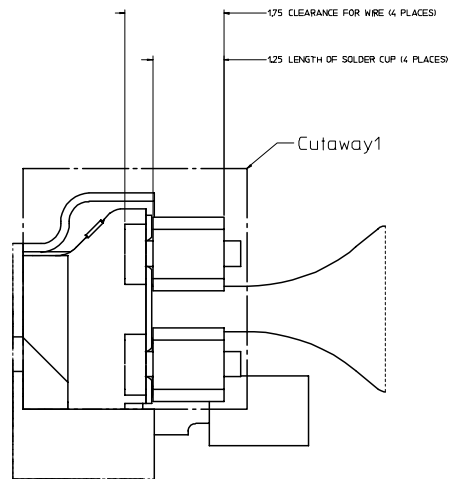
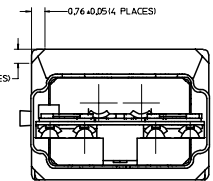
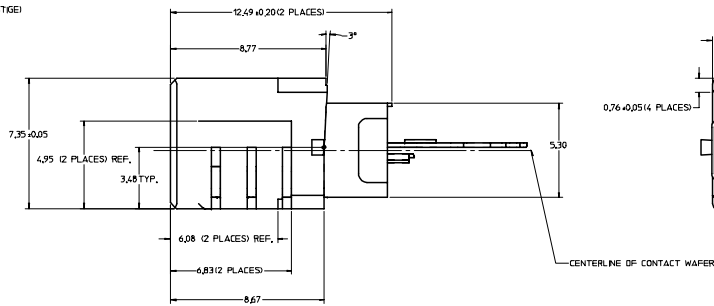
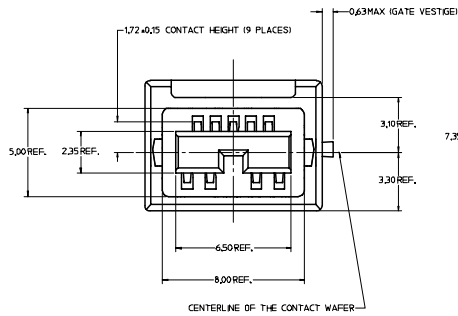
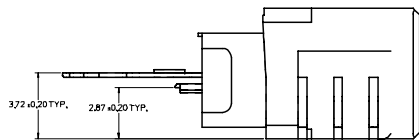
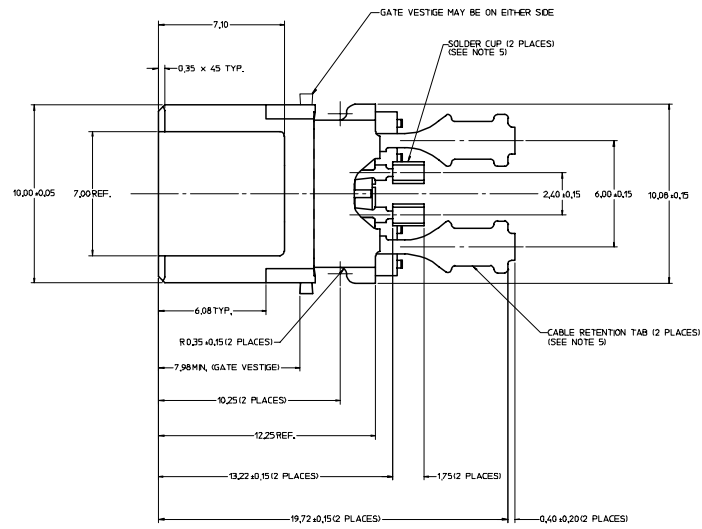


NOTES:

1. MATERIAL:
 - * PLASTIC HOLDINGS: GLASS FILLED LCP, COLOR BLACK.
 - * PLUG SHELL: STAINLESS STEEL.
 - * CONTACTS: COPPER ALLOY.
2. FINISH:
 - * PLUG SHELL: 3.05 MICRONS MINIMUM TIN OVER 127 MICRONS MINIMUM NICKEL.
 - * CONTACTS: 0.75 MICRONS MINIMUM SELECT GOLD, AND 3.05 MICRONS MINIMUM SELECT TIN OVER 127 MICRONS MINIMUM NICKEL OVERALL.
3. THE PRIMARY SHIPPING CARTON WILL BE LABELED "COMPLIANT TO RoHS DIRECTIVE 2002/95/EC, AND ELY ANNEX II OF DIRECTIVE 2000/53/EC. CARTONS WITHOUT THIS LABEL MAY CONTAIN PRODUCT WITH TIN-LEAD IN THE PC TAIL AREA.
4. PRODUCT SPECIFICATION: PS-45240-001.
5. DIMENSIONS AND FEATURES PLACED ACROSS CENTERLINES TO BE SYMMETRIC ABOUT THOSE CENTERLINES WITHIN 0.05MM TOTAL.
6. THE SOLDER CUPS AND CABLE RETENTION TABS ARE TIN PLATED TO FACILITATE SOLDERING.



NUMBERING



ISOMETRIC PROJECTIONS OF 449711001 FROM TWO PERSPECTIVES (SCALE: 4:1)

Detail1
SCALE: 32:1

REVISED EC NO: UCP2005-2000 2005/03/18 DRAWN: JCOMERC CHK: JCOMERC APPR: JCOMERC DATE: 02/01/30 REV: B1	QUALITY SYMBOLS	GENERAL TOLERANCES (UNLESS SPECIFIED)	SCALE 10:1	DESIGN UNITS METRIC	THIRD ANGLE PROJECTION	REVISE ON CAD ONLY	
	4 PLACES ± --- ± --- 3 PLACES ± --- ± --- 2 PLACES ± 0.10 ± --- 1 PLACE ± --- ± ---	mm INCH ANGULAR ± 1 °	DIMENSION STYLE MM ONLY	DRAWN BY PELOZA	DATE 02/01/30	TITLE FINAL PLUG ASSEMBLY BETA PLUG 1394B	
	DRAFT WHERE APPLICABLE MUST REMAIN WITHIN DIMENSIONS	APPROVED BY COMERC	DATE 02/01/30	MATERIAL NO. 449711001	DOCUMENT NO. SD-44971-001	SHEET NO. 1 OF 1	
	THIS DRAWING CONTAINS INFORMATION THAT IS PROPRIETARY TO MOLEX INCORPORATED AND SHOULD NOT BE USED WITHOUT WRITTEN PERMISSION						