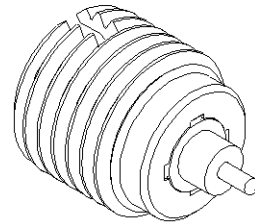
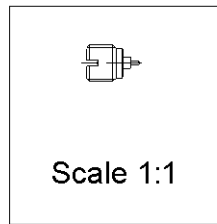
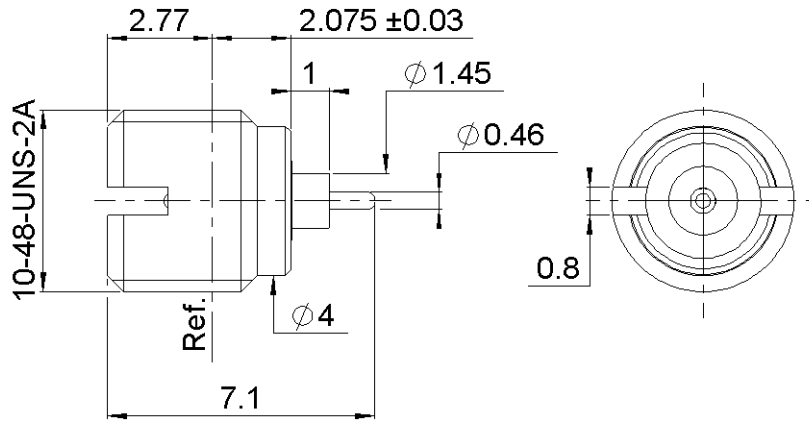
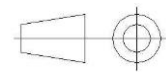


PAGE 1/3	ISSUE <b>04-05-16B</b>	SERIES <b>SMP</b>	<b>PART NUMBER R222561301</b>
----------	------------------------	-------------------	-------------------------------



All dimensions are in mm.



COMPONENTS	MATERIALS	PLATING (µm)
Body	<b>STAINLESS STEEL</b>	<b>PASSIVATED</b>
Center contact	<b>BERYLLIUM COPPER</b>	<b>GOLD OVER NICKEL</b>
Outer contact	-	-
Insulator	<b>PTFE</b>	-
Gasket	-	-
Others parts	-	-
-	-	-
-	-	-

PAGE 2/3	ISSUE <b>04-05-16B</b>	SERIES <b>SMP</b>	<b>PART NUMBER R222561301</b>
----------	------------------------	-------------------	-------------------------------

**PACKAGING**

Standard	Unit	Other
<b>100</b>	<b>Contact us</b>	<b>Contact us</b>

**ELECTRICAL CHARACTERISTICS**

Impedance		<b>50</b>		Ω
Frequency		<b>0-12</b>		GHz
VSWR	<b>1.3</b>	<b>+</b>	<b>0,0000</b>	x F(GHz) Maxi
Insertion loss			<b>0.12</b>	√F(GHz) dB Maxi
RF leakage	-	(	<b>NA</b>	- F(GHz) dB Maxi
Voltage rating			<b>335</b>	Veff Maxi
Dielectric withstanding voltage			<b>500</b>	Veff mini
Insulation resistance			<b>5000</b>	MΩ mini

**MECHANICAL CHARACTERISTICS**

Center contact retention				
Axial force – Mating End			<b>NA</b>	N mini
Axial force – Opposite end			<b>NA</b>	N mini
Torque			<b>NA</b>	N.cm mini
Recommended torque				
Mating			<b>NA</b>	N.cm
Panel nut			<b>90</b>	N.cm
Mating life			<b>500</b>	Cycles mini
Weight			<b>0,3000</b>	g

**ENVIRONMENTAL**

Operating temperature	<b>-65/+165</b>	°C
Hermetic seal	<b>NA</b>	Atm.cm3/s
Panel leakage	<b>NA</b>	

**SPECIFICATION**

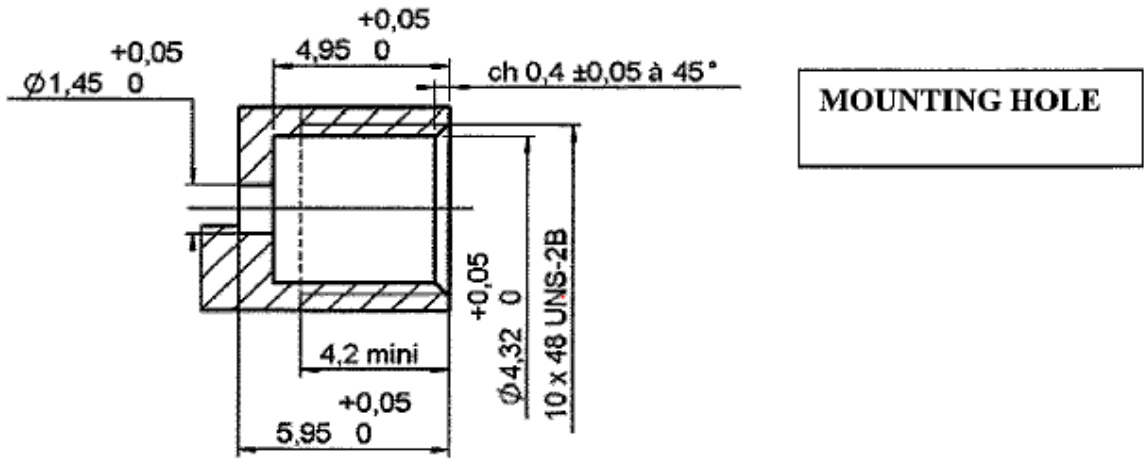
**OTHER CHARACTERISTICS**

Assembly instruction:

Others:  
**See page 3**

PAGE 3/3	ISSUE 04-05-16B	SERIES SMP	PART NUMBER R222561301
----------	-----------------	------------	------------------------

**ADDITIONAL INFORMATIONS  
 MOUNTING AND REPLACEMENT INSTRUCTIONS**



- 1) Connector must be screwed or unscrewed with adapted torque driver R282.339.002 (recommended coupling torque: 90 N.cm)
- 2) Slide on the connector in F direction until it stops against the tool.

- 3) Screw the whole into the housing until activation of the torque driver.
- 4) Withdraw the tool and solder the center contact.

