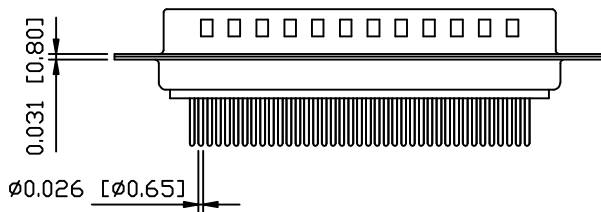
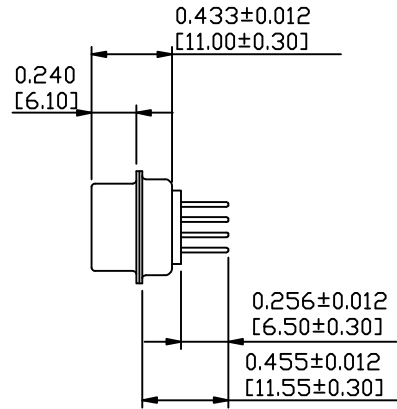
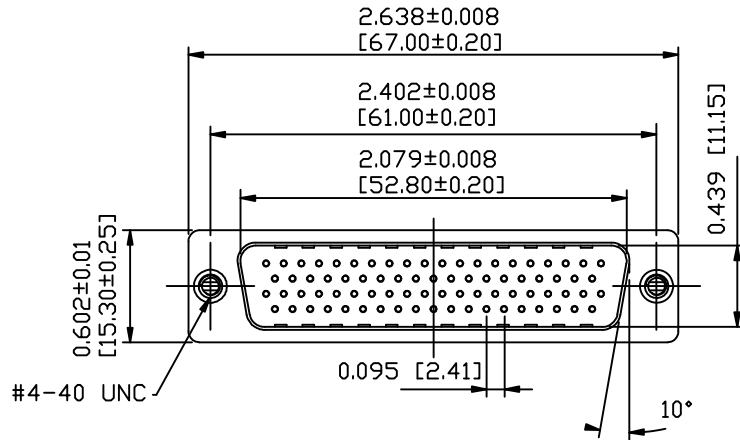


DESCRIPTION: HIGH DENSITY - MACHINED CONTACTS - VERTICAL

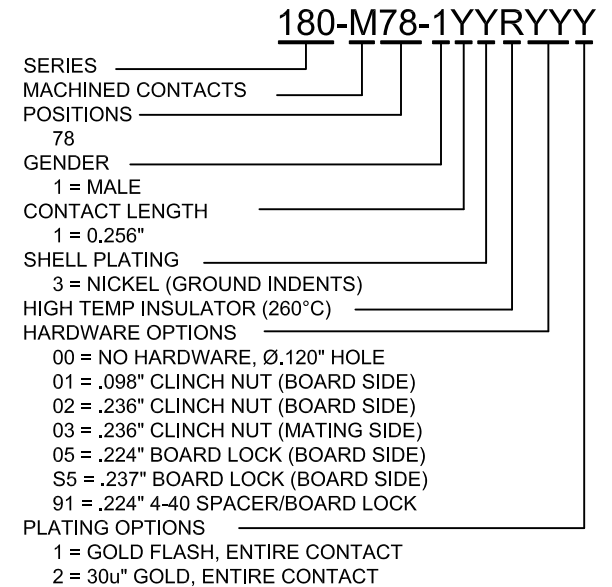


MATERIALS AND FINISH:

SHELL: STEEL MATERIAL, NICKEL FINISH
 INSULATOR: PA6T, 260°C PROCESS TEMP, UL 94V-0 RATED, BLACK
 CONTACT MATERIAL: BRASS
 CONTACT FINISH: SEE PLATING PART NUMBER KEY BELOW

ELECTRICAL:


CONTACT CURRENT RATING: 3 AMPS
 CONTACT RESISTANCE: 10 mOHMS Max.
 DIELECTRIC WITHSTANDING VOLTAGE: 1,000VAC Min.
 INSULATION RESISTANCE: 5 GOHMS Min.
 TEMPERATURE RATING: -55° ~ +125° C



UNITS = INCHES [MM]

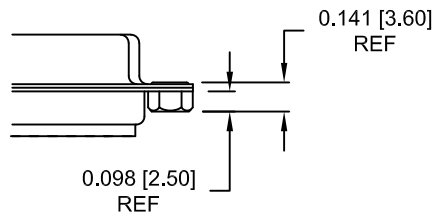
DO NOT SCALE FROM DRAWING

RoHS COMPLIANT

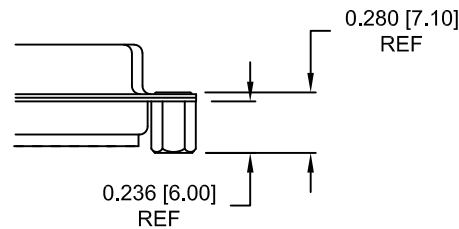
	THESE DRAWINGS AND SPECIFICATIONS ARE THE PROPERTY OF NorComp AND SHALL NOT BE REPRODUCED, COPIED OR USED AS THE BASIS FOR THE MANUFACTURE OF SALE OF APPARATUS WITHOUT WRITTEN PERMISSION.		DRAWN: B. BRIDGES	DATE: 10-27-17
	NorComp		SCALE: NTS	SHEET 1 OF 3
DWG NO. 180-M78-113RYYY				

ALL CLINCH-NUTS ARE 4-40 INTERNAL THREADS

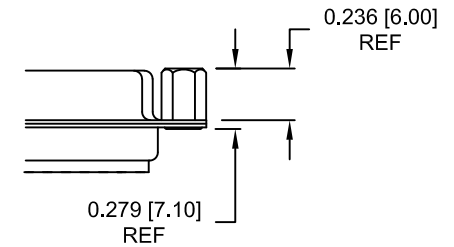
01X 0.098" BOARD SIDE



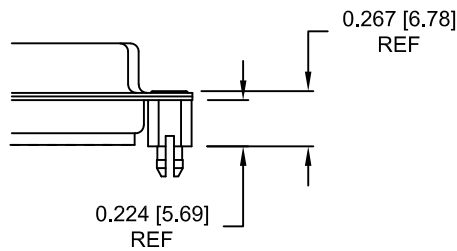
02X 0.236" BOARD SIDE



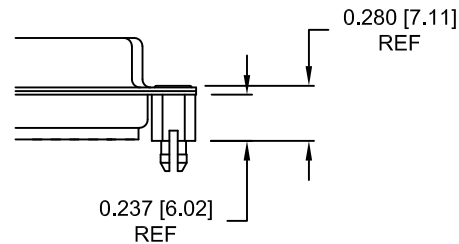
03X..... 0.236" MATING SIDE



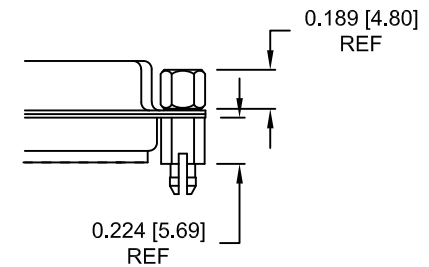
05X 0.224" BOARD SIDE



S5X 0.237" BOARD SIDE



91X 0.224" BOARD SIDE
0.189" MATING SIDE



NOTE: 4-40 FEMALE SCREW LOCK IS REMOVABLE

UNITS = INCHES [mm]

DO NOT SCALE FROM DRAWING



THESE DRAWINGS AND SPECIFICATIONS ARE THE PROPERTY OF NorComp AND SHALL NOT BE REPRODUCED, COPIED OR USED AS THE BASIS FOR THE MANUFACTURE OF SALE OF APPARATUS WITHOUT WRITTEN PERMISSION.

DRAWN: B. BRIDGES		DATE: 10-27-17	
SCALE: NTS	SHEET 2	OF 3	REV 1
DWG NO. 180-M78-113RYYY			

RoHS COMPLIANT

NorComp

