

315Mhz remote relay switch kits - 2 channels

SKU 103990004

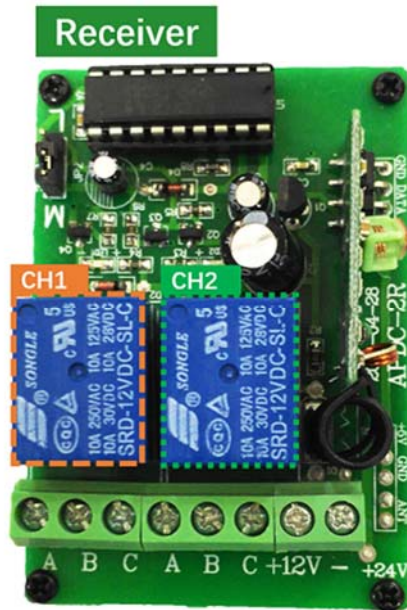
Description

This remote switch allows you to remotely control any 12 Volt DC device. Perfect for controlling any 12V devices such as Lights , Fans, Landscaping Lighting and more. This easy-to-wire kit is perfect for anybody with a basic knowledge of electrical wiring, and can easily be wired to many 12V applications. For PC Modders, the end of result of the Remote Control 12VDC kit are truly impressive and are sure to ooh and ah the crowds. For DIYers, the kit will give some magical effect to your projects.

Basic Specification:

- Frequency: 315Mhz.
- Modulation: ASK
- Working voltage for Receiver: 12VDC
- Working voltage for Transmitter: 5~12V
- Receiver sensibility: -105dbm
- Emission distance: 100m in open ground

Pin Out:



Receiver:

Each Relay owns one group of 3 pins:

A - Normally closed, open when relay activate

B - Common node

C - Normally open, close when relay activate

Transmitter:

10 - CH2, HIGH trigger

11 - NC

12 - CH1, HIGH trigger

13 - NC

Technical Details

Dimensions	80mm x 54mm x 28mm
Weight	G.W 72g
Battery	Exclude

Part List

315Mhz remote relay switch kits - 2 channels	1
--	---

ECCN/HTS

ECCN	Not Available
HSCODE	8538900000