

MHF4 Pigtail Cables

I-PEX MHF4 To SMA Female Bulkhead Jack 1.13 Coax Cable



Applications

- SMA Female to MHF-4 jumper cable
- RF connections for radios and antennas
- MHF4 LK ideal for continuous shock & vibration applications

Attenuation

Frequency (GHz)	1 GHz	2 GHz	3 GHz	4 GHz	5 GHz	6 GHz
dB 1/m	2.2	3.1	3.9	4.5	5.0	5.5

Key Features

- Low Loss coaxial cable
- OD 1.13mm
- Color Grey
- Various cable lengths available
- RoHS and REACH compliant
- Crimp strength 20N minimum
- MHF4 locking solution available

Electrical Specifications

Suggested working frequency:	0 to 6 GHz
Nominal Impedance:	50 +/- 3 Ω
Maximum operating voltage:	30 V
VSWR:	-15 dB (Max. between 0 and 6 GHz)

Environmental Specifications

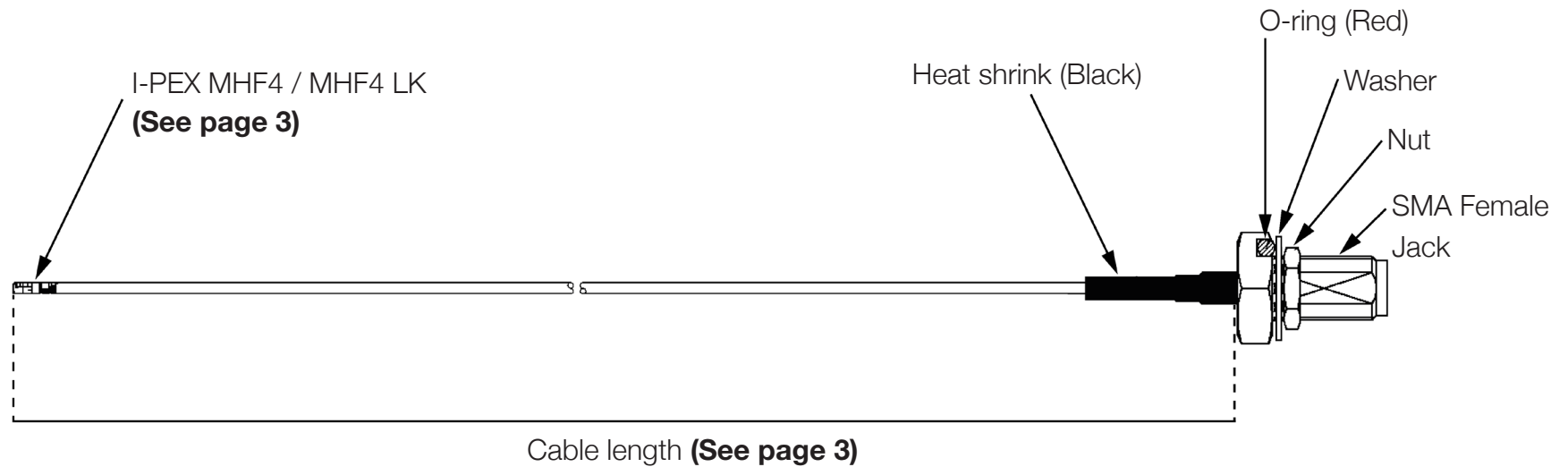
Operating Temperature:	-20 to +60 °C
Storage Temperature:	-20 to +60 °C
RoHS Compliant:	YES
REACH Compliant:	YES

MHF4 Pigtail Cables

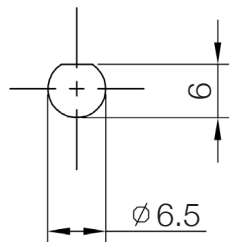
I-PEX MHF4 To SMA Female Bulkhead Jack 1.13 Coax Cable

Mechanical Drawing

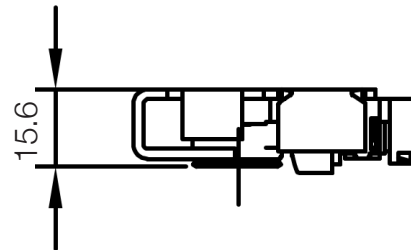
Note: The O-ring is applicable to the IP67 models.



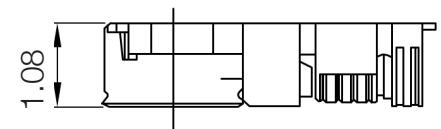
RECOMMENDED MOUNTING HOLE



MHF 4L LK PLUG 3:1



MHF 4L PLUG 8:1



MHF4 Pigtail Cables

I-PEX MHF4 To SMA Female Bulkhead Jack 1.13 Coax Cable

Mechanical Specifications

Product	Length (mm)	Description	Connector 1	Connector 2	Mounting Type
ASMGAA003XB113S11	30	I-PEX MHF4 TO SMA FEMALE BULKHEAD 1.13 CABLE	I-PEX/MHF4		REAR MOUNT
ASMGAA005XB113S11	50				
ASMGAA0075XB113S11	75				
ASMGAA010XB113S11	100				
ASMGAA0125XB113S11	125				
ASMGAA015XB113S11	150				FRONT MOUNT
ASMGAA003XA113S11	30				
ASMGAA005XA113S11	50				
ASMGAA0075XA113S11	75				
ASMGAA010XA113S11	100				
ASMGAA0125XA113S11	125	IP67 I-PEX MHF4 TO SMA FEMALE BULKHEAD 1.13 CABLE	IP67/I-PEX/MHF4	SMAF BLKHD	REAR MOUNT
ASMGAA015XA113S11	150				
ASMGAX003XD113S11	30				
ASMGAX005XD113S11	50				
ASMGAX0075XD113S11	75				
ASMGAX010XD113S11	100				FRONT MOUNT
ASMGAX0125XD113S11	125				
ASMGAX015XD113S11	150				
ASMGAX003XC113S11	30				
ASMGAX005XC113S11	50				
ASMGAX0075XC113S11	75	REAR MOUNT/LOCKING MECHANISM			
ASMGAX010XC113S11	100				
ASMGAX0125XC113S11	125	REAR MOUNT/LOCKING MECHANISM			
ASMGAX015XC113S11	150				
ASMGAL010XC113S11	100	IP67 I-PEX MHF4 LK TO SMA FEMALE BULKHEAD 1.13 CABLE	IP67/I-PEX/MHF4 LK		REAR MOUNT/LOCKING MECHANISM
ASMGGLK010XC137S11	100	IP67 I-PEX MHF LK TO SMA FEMALE BULKHEAD 1.13 CABLE	IP67/I-PEX/MHF LK		REAR MOUNT/LOCKING MECHANISM