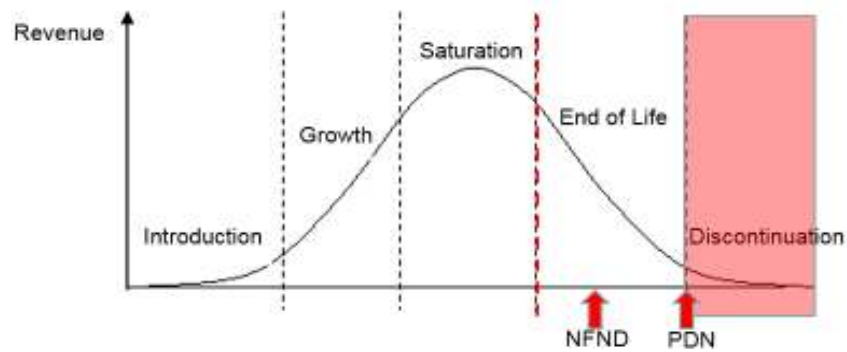


Light is OSRAM

Product Discontinuation (acc. JEDEC J-STD-048) OS-PD-2017-050

01.08.2017

Last order:	11/1/2017
Last delivery:	2/1/2018
Reason:	Brightness improvement



Please direct your feedback to your local Sales office.

DISCONTINUED				NEW (REPLACEMENT)			
Device	Ordering Code	Function	Brand	Device	Datasheet Ordering Code	Function	Brand
GW P9LT31.EM							
GW P9LT31.EM-PRPT-XX57-1-150-R18	Q65111A7649	LED	Duris S8	GW P9LT31.EM-PSPT-XX57-1-150-R18	Q65112A4425	LED	Duris S8
GW P9LT31.EM-PRPT-XX58-1-150-R18	Q65111A7650	LED	Duris S8	GW P9LT31.EM-PSPT-XX58-1-150-R18	Q65112A4424	LED	Duris S8
GW P9LR31.EM							
GW P9LR31.EM-PPPR-XX56-1-150-R18	Q65111A7656	LED	Duris S8	GW P9LR31.EM-PQPR-XX56-1-150-R18	Q65112A4428	LED	Duris S8
GW P9LR31.EM-PPPR-XX57-1-150-R18	Q65111A7657	LED	Duris S8	GW P9LR31.EM-PQPR-XX57-1-150-R18	Q65112A4427	LED	Duris S8

Products Affected by Product Discontinuation Notification

Number: OS-PD-2017-050

Name: Discontinuation due to Brightness Improvement

Release Date: 8/1/2017

Last Order: 11/1/2017

Last Delivery: 2/1/2018

DISCONTINUED

NEW (REPLACEMENT)

<i>Product</i>	<i>QNumber</i>	<i>QNumber Description</i>	<i>Part Number</i>	<i>Product</i>	<i>QNumber</i>	<i>QNumber Description</i>	<i>Part Number</i>
GW P9LR31.		GW P9LR31.EM					
GW P9LR31.	Q65111A7656	GW P9LR31.EM-PPPR-XX56-1-150-R18	GW P9LR31.EM-PPPR-XX56-1	GW P9LR31.	Q65112A4428	GW P9LR31.EM-PQPR-XX56-1-150-R18	
GW P9LR31.	Q65111A7657	GW P9LR31.EM-PPPR-XX57-1-150-R18	GW P9LR31.EM-PPPR-XX57-1	GW P9LR31.	Q65112A4427	GW P9LR31.EM-PQPR-XX57-1-150-R18	
GW P9LT31.		GW P9LT31.EM					
GW P9LT31.	Q65111A7649	GW P9LT31.EM-PRPT-XX57-1-150-R18	GW P9LT31.EM-PRPT-XX57-1	GW P9LT31.	Q65112A4425	GW P9LT31.EM-PSPT-XX57-1-150-R18	
GW P9LT31.	Q65111A7650	GW P9LT31.EM-PRPT-XX58-1-150-R18	GW P9LT31.EM-PRPT-XX58-1	GW P9LT31.	Q65112A4424	GW P9LT31.EM-PSPT-XX58-1-150-R18	