

ITEM	PART#	DESCRIPTION	QTY	UOM
A	510210600	PicoBlade1.25 Rec Hsg 6P	1	PC
B	500588000	PicoBlade1.25 Crimp Rec Term Chain Tin	6	PC
C	--	Blank label 12.7x35.5mm (WHT:12.7mm) HF	1	PC

FROM	TO	DESCRIPTION	COLOR
A1	--	CABLE 28 AWG UL 1061 BLACK	BLACK
A2	--	CABLE 28 AWG UL 1061 BLACK	BLACK
A3	--	CABLE 28 AWG UL 1061 BLACK	BLACK
A4	--	CABLE 28 AWG UL 1061 BLACK	BLACK
A5	--	CABLE 28 AWG UL 1061 BLACK	BLACK
A6	--	CABLE 28 AWG UL 1061 BLACK	BLACK

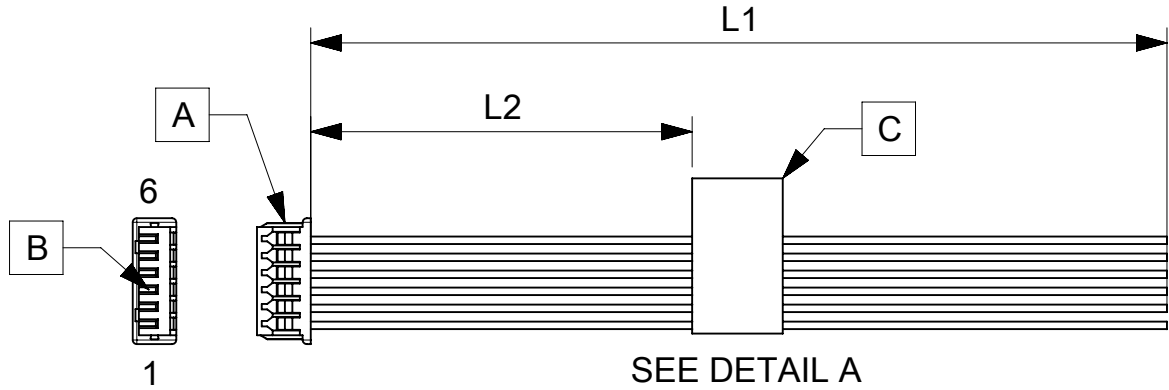
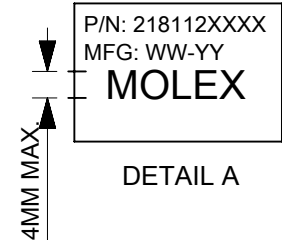


TABLE			
PART NUMBER	L1	L2 (REF)	TITLE
2181120600	75±5	30	6 CIRCUIT PICOBLADE R:BLUNT CABLE 75MM
2181120601	150±6	70	6 CIRCUIT PICOBLADE R:BLUNT CABLE 150MM
2181120602	225±6	105	6 CIRCUIT PICOBLADE R:BLUNT CABLE 225MM
2181120603	300±8	145	6 CIRCUIT PICOBLADE R:BLUNT CABLE 300MM
2181120604	425±8	205	6 CIRCUIT PICOBLADE R:BLUNT CABLE 425MM



- NOTES**
1. Connector view shown is from mating side.
 2. Free ends must be blunt cut.
 3. Label text must be 2mm max. in height with Arial font.
 4. Label must be wrapped in flag type on the cables.

REVISION			
DATE	REV	DESCRIPTION	CHANGER
04/03/2021	A	INITIAL RELEASE	ARAJU

DOCUMENT STATUS	P1	RELEASE DATE	2021/03/26	04:03:44
-----------------	----	--------------	------------	----------

FUNCTIONAL SYMBOLS	THIS DRAWING CONTAINS INFORMATION THAT IS PROPRIETARY TO MOLEX ELECTRONIC TECHNOLOGIES, LLC AND SHOULD NOT BE USED WITHOUT WRITTEN PERMISSION	
$\frac{F}{A} = 0$	DIMENSION UNITS: mm	SCALE: NTS
$\frac{F}{E} = 0$	GENERAL TOLERANCES (UNLESS SPECIFIED)	
$\frac{F}{P} = 0$	ANGULAR TOL: ± °	CURRENT REV DESC:
DIVISIONAL SYMBOLS	4 PLACES ±	EC NO: 659320
	3 PLACES ±	DRWN: ARAJU 2021/03/04
	2 PLACES ±	CHK'D: RDESAI01 2021/03/26
	1 PLACE ±	APPR: RDESAI01 2021/03/26
	0 PLACES ±	INITIAL REVISION:
		DRWN: ARAJU 2021/03/04
		APPR: RDESAI01 2021/03/26
DRAFT WHERE APPLICABLE MUST REMAIN WITHIN DIMENSIONS	THIRD ANGLE PROJECTION	DRAWING: A4-SIZE
		SERIES: 218112
		MATERIAL NUMBER: SEE TABLE
		CUSTOMER: GENERAL MARKET
		SHEET NUMBER: 1 OF 1

molex	
SEE TABLE	
PRODUCT CUSTOMER DRAWING	
DOCUMENT NUMBER: 2181120600	DOC TYPE: PSD
DOC PART: 000	REVISION: A