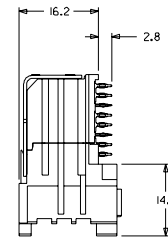
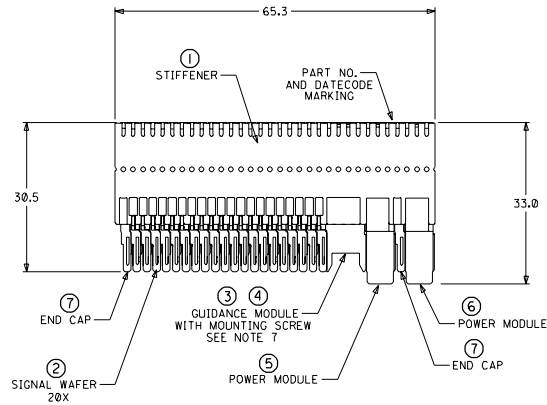
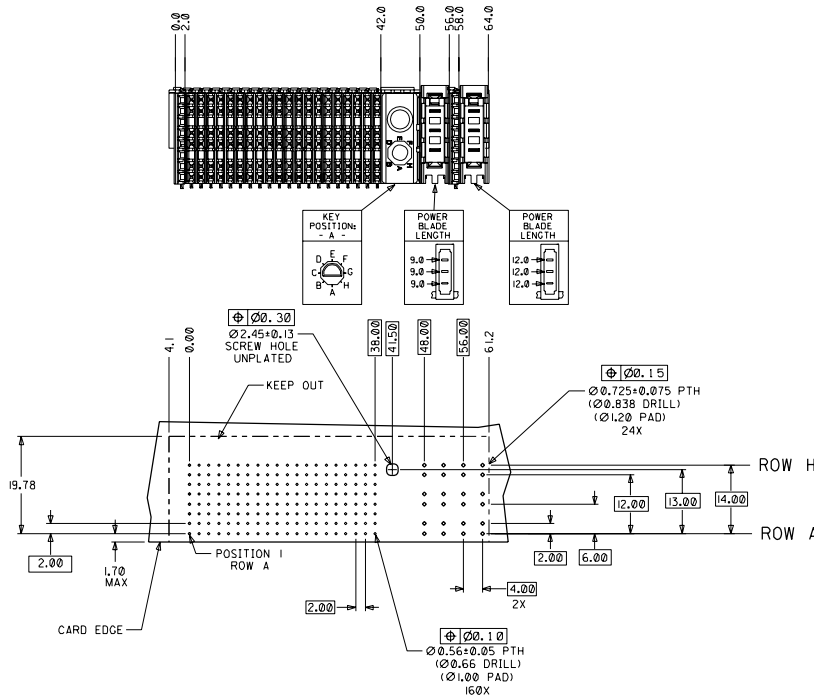


CUSTOMER: LINSANG MANUFACTURING



- NOTES: (UNLESS OTHERWISE SPECIFIED)
- MATERIALS: HOUSING - LIQUID CRYSTAL POLYMER (LCP), GLASS-FILLED, UL94V-0, BLACK. STIFFENER - STAINLESS STEEL. TERMINALS - HIGH PERFORMANCE COPPER ALLOY.
 - FINISH: SELECTIVE GOLD (Au) IN CONTACT AREA. 0.00076mm MINIMUM THICKNESS; SELECTIVE TIN/LEAD (Sn/Pb) ON PCB TAILS, NICKEL (Ni) OVERALL.
 - REFER TO MOLEX PRODUCT SPECIFICATION PS-74031-999 FOR PERFORMANCE SPECIFICATIONS.
 - REFER TO MOLEX DOCUMENT SD-74681-002 FOR ADDITIONAL DETAIL ON THE HSD SIGNAL WAFER.
 - REFER TO MOLEX DOCUMENT SD-74037-006 FOR ADDITIONAL DETAIL ON THE GUIDANCE MODULE.
 - REFER TO MOLEX DOCUMENT SD-74026-002 FOR ADDITIONAL DETAIL ON THE POWER MODULE.
 - MOUNTING SCREWS WILL BE BAGGED WITH EACH CONNECTOR.
 - PARTS ARE PACKAGED IN TUBES PER PK-70873-5041.



DAUGHTERCARD HOLE PATTERN (CONNECTOR SIDE)

| ITEM | PART NUMBER | DESCRIPTION | QTY |
|------|-------------|-------------------------|-----|
| 1 | 74046-0065 | STIFFENER | 1 |
| 2 | 74681-0001 | HSD8 WAFER | 20 |
| 3 | 74037-8001 | POLARIZING/GUIDE MODULE | 1 |
| 4 | 73726-0000 | GUIDE MODULE MNTG SCREW | 1 |
| 5 | 74026-8222 | POWER MODULE | 1 |
| 6 | 74026-8444 | POWER MODULE | 1 |
| 7 | 74038-1001 | END CAP | 2 |

| | | | | |
|---|---|---|---|---|
| INITIAL RELEASE EC NO. UDT2001-1404 DRAWN: ATP 01/06/05 CHECK: LAURX 01/06/05 APPR: BIXLER 01/06/05 | QUALITY SYMBOLS MAJOR: ∇ CRITICAL: ∇ | GENERAL TOLERANCES: (UNLESS SPECIFIED) DIMENSIONS: \square mm \square mm \square mm \square mm SHT: \square INCH \square mm \square mm \square mm REV: \square INCH \square mm \square mm \square mm | SCALE: 2:1 DESIGN UNITS: \square mm \square INCH THIRD ANGLE PROJECTION | DIMENSIONS: \square mm \square mm \square mm \square mm SHT: \square INCH \square mm \square mm \square mm REV: \square INCH \square mm \square mm \square mm |
| | DRAWN BY & DATE: ATP 01/06/05 CHECKED BY & DATE: LAURX 01/06/05 APPROVED BY & DATE: BIXLER 01/06/05 | TITLE: 8 ROW HSD DAUGHTERCARD ASSEMBLY SALES DRAWING | | |
| | ANGULAR: $\pm 2^\circ$ | CAD FILENAME: SD-74680-024 MATERIAL NO.: 746800024 DRAWING NO.: SD-74680-024 | MOLEX INCORPORATED | SHEET NO.: 1 OF 1 |
| | DRAFT WHERE APPLICABLE MUST REMAIN WITHIN DIMENSIONS | THIS DRAWING CONTAINS INFORMATION THAT IS PROPRIETARY TO MOLEX INCORPORATED AND SHOULD NOT BE USED WITHOUT WRITTEN PERMISSION. | | |