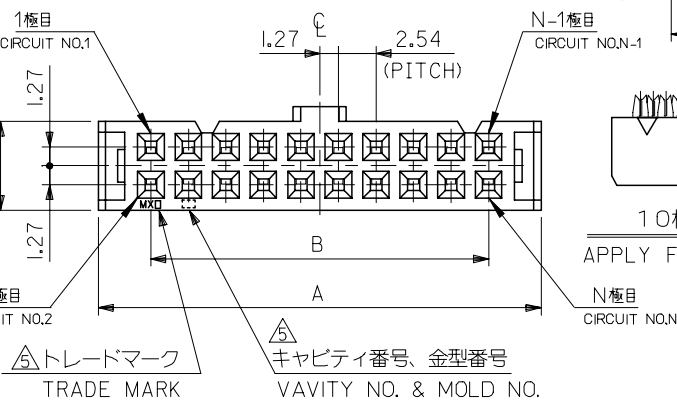
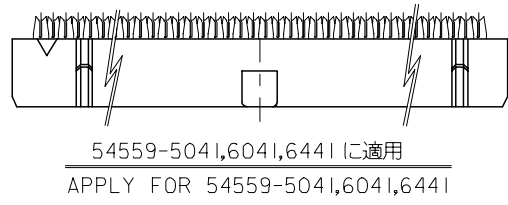
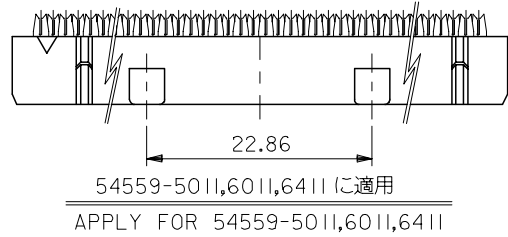
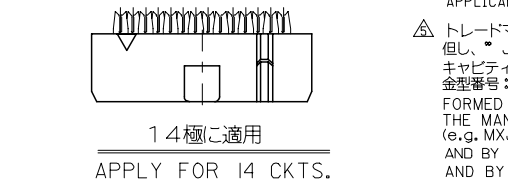
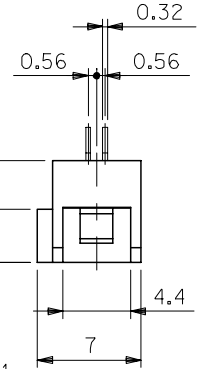
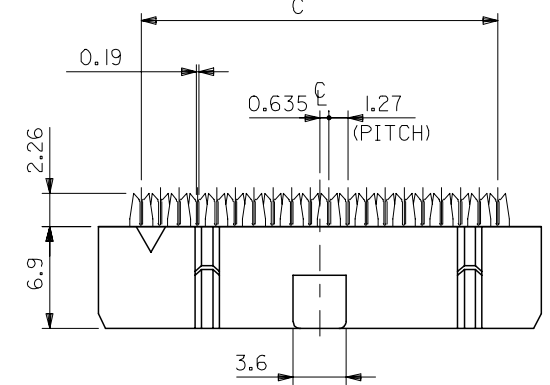
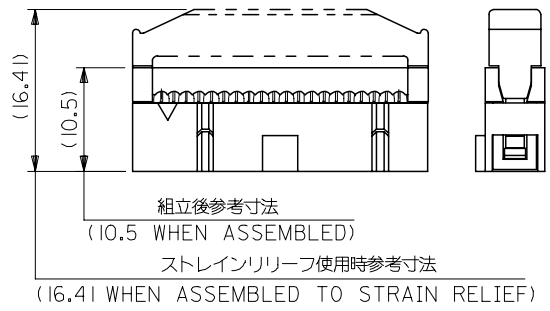
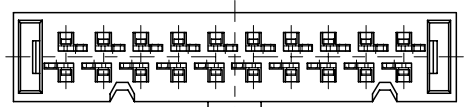


10 9 8 7 6 5 4 3 2 1



注記 NOTES

- 材料ハウジング : PBT (UL94V-0), 黒色
ターミナル : リン青銅 (ツツケ下地金メッキ)
MATERIAL HOUSING : PBT, UL 94V-0, BLACK
TERMINAL : PHOS. BR. (AU PLATING, NI UNDER-PLATING)
 - 適用電線 : 1.27ピッチリボンケーブル 被覆外径 : $\phi 1.14$ MAX.
より線 : AWG#28 (芯線7本構成)
FOR USE WITH AWG#28 STRANDED WIRE
(CONSISTS OF 7 CONDUCTORS)
1.14 DIA. MAX. INSULATION RIBBON CABLE WITH 1.27 CENTERS.
 - 嵌合相手 : 55401-***11は54559-***11に適用。
55401-***31は54559-***41に適用。
501577シリーズは54559-***11に適用。
55638-***11は54559-***11に適用。
55638-***31は54559-***41に適用。
MATE WITH : 55401-***11 SUITS 54559-***11
55401-***31 SUITS 54559-***41
501577 SERIES SUITS 54559-***11
55638-***11 SUITS 54559-***11
55638-***31 SUITS 54559-***41.
 - 適合アッパーハウジング : 54560-***01
APPLICABLE UPPER HSG : 54560-***01
適合ストレーンリリーフ : 54561-***
APPLICABLE STRAIN RELIEF : 54561-***01
- △トレードマーク : MXプラス製造工場を示すアルファベットにて構成
但し、"J"はJAPANを示す。(例 MX J)
キャビティ番号 : 数字で表示。
金型番号 : アルファベットにて構成。
FORMED BY MX AND ALPHABET WHICH MEAN
THE MANUFACTORY, BUT "J" MEANS JAPAN. (TO TRADE MARK)
(e.g. MXJ)
AND BY NUMBERS (TO CAVITY NO.)
AND BY ALPHABET (TO MOLD NO.)

C	B	A	MATERIAL NO.	CKT.
80.01	78.74	85.85	54559-6441	64
			54559-6411	
74.93	73.66	80.77	54559-6041	60
			54559-6011	
62.23	60.96	68.07	54559-5041	50
			54559-5011	
49.53	48.26	55.37	54559-4011	40
41.91	40.64	47.75	54559-3411	34
36.83	35.56	42.67	54559-3011	30
31.75	30.48	37.59	54559-2611	26
24.13	22.86	29.97	54559-2011	20
19.05	17.78	24.89	54559-1611	16
16.51	15.24	22.35	54559-1411	14
11.43	10.16	17.27	54559-1011	10
C	B	A	MATERIAL NO.	CKT.

MODEL NO. 54559-***11	
SCALE 3:1	DESIGN UNITS METRIC
THIRD ANGLE PROJECTION	
TITLE 2.54 FLAT CABLE CONN. REC HOUSING ASSY	
MOLEX MOLEX INCORPORATED	
DOCUMENT NO. SD-54559-003	SHEET NO. 1 OF 1

REVISED EC NO: J2007-2853 DRW: NABEI 2007/04/13 CHKD: YMAEDA 2007/04/13 APPR: NUKITA 2007/04/13	GENERAL TOLERANCES (UNLESS SPECIFIED)	DIMENSION STYLE MM ONLY
	10 UNDER ±0.2	DRAWN BY DATE S. MATSUZAKI '99/03/04
	10 OVER 30 UNDER ±0.25	CHECKED BY DATE S. KUNISHI '03/08/06
	30 OVER ±0.3	APPROVED BY DATE T. YAMAGUCHI '03/08/06
	ANGULAR ±3 °	MATERIAL NO. SEE CHART
DRAFT WHERE APPLICABLE MUST REMAIN WITHIN DIMENSIONS		SIZE A3