

1

2

3

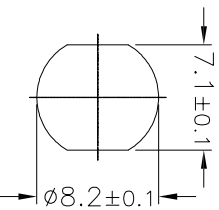
4

5

6

7

A



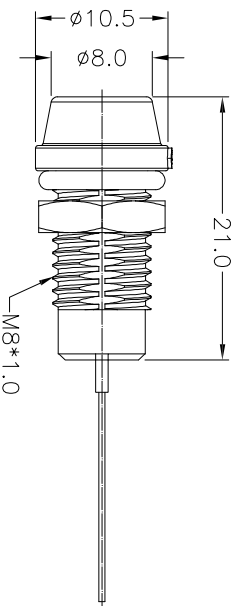
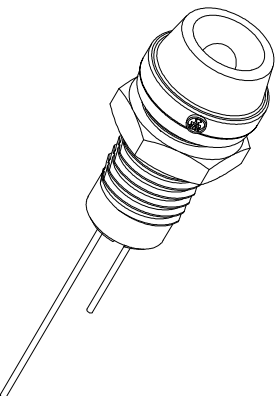
Recommended Panel Cut-Out

A

Notes:

- Waterproof Rate: IP67
- LED Holder: PC+ABS, Black
- LED Ø3mm, Blue
- O-ring: EPDM, Black
- Screw Nut: Nylon + GF
- Operating Temperature: -40°C ~ +80°C
- For Panel Thickness 6.5mm Max.
- ① Forward Voltage: Typ. 3.5V/ Max. 4(V), Blue.
- Forward Current: Max. 30mA, Blue
- Reverse Voltage: DC 5V
- Luminous Intensity: Min. 1080/ Typ. 2000(Mcd)

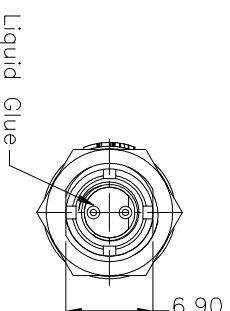
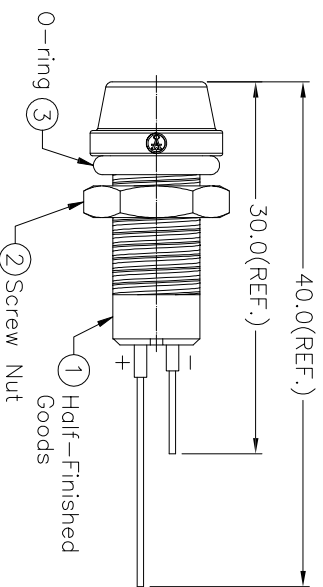
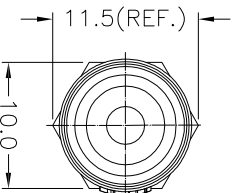
B



C

D

E



E

F

RoHS compliant
Unit: mm

Customer-No.

ASSMANN WSW-No.
A-LED8-1BAAS-PR7-1

G

Scale

Free

TOLERANCE

.X

.XX

.XXX

DIM

TOL

±1°

Angle

① Add forward bias current/voltage

03.09.2018

Segal

② Drawn

11.03.2014

Winnie

Date

Name

11.03.2014

Winnie

Approved

03.09.2018

Amy

Drawing-No.

ASS 6226 CO

rev01

ASSMANN
WSW components

Replace

Sheet

1

2

3

4

5

6

7

H

H