

DC/DC converter module, regulated, Screw connection, Mounting type: Mounting rail TS 35, Input: 1-phase, Output: 12 VDC/0.5 A

Business data

Article number	<u>7792.2</u>
Article name	DC-DC/12-0,5
GTIN (EAN)	4044211078102
Packaging unit	1
Quantity unit	PC
Weight per piece (not including packaging)	42 g
Weight per piece (including packaging)	100 g
Unit of weight	G
Customs number	85423990
Country of origin	NL
Product description	Converter module

Technical data

Dimensions

Length	18 mm
Width	87 mm
Height TS 35/7.5	57 mm

Ratings

Overvoltage category	III
Contamination degree	2

Connection data

Connection principle	Screw connection
Wire cross-section single core (rigid), min.	0.2 mm ²
Wire cross-section single-core (rigid), max.	4 mm ²
Wire cross-section stranded, min.	0.2 mm ²
Wire cross-section stranded, max.	2.5 mm ²
Wire cross-section stranded with wire-end ferrules, min.	0.2 mm ²
Wire cross-section stranded with wire-end ferrules, max.	2.5 mm ²
Stripping length	7 mm
Torque	0.6 Nm

Input data

Input voltage DC min.	14,5 V
Input voltage DC max.	40 V
Zero-load current	5 mA
Power consumption	6 W

Output data

Output voltage DC	12 V
Regulated DC voltage	✓
Output current	0.5 A
Short-circuit current	0,9 A
Residual ripple	<100 mV

Materials

Working temperature, min.	-20 °C
Working temperature, max.	50 °C

Technical data

Further technical data

Protection class	IP00
Status display	✓
Efficiency	80 %
Switching frequency	50000 kHz
Short-circuit resistant	✓

Environmental Product Compliance

REACH Conform	yes
REACH Reference date	2022-06-10
REACH Candidate Substance Note	No
RoHS Conform	yes

Approvals

Standards and regulations

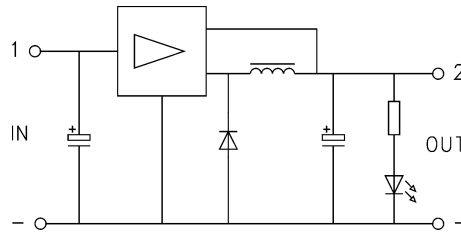
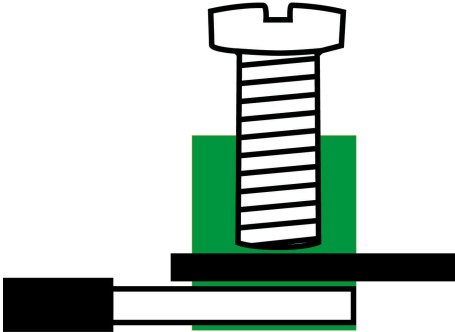
CE compliant

yes

Standards / specifications

DIN EN 50178 / DIN VDE 0110

Media



Accessories
