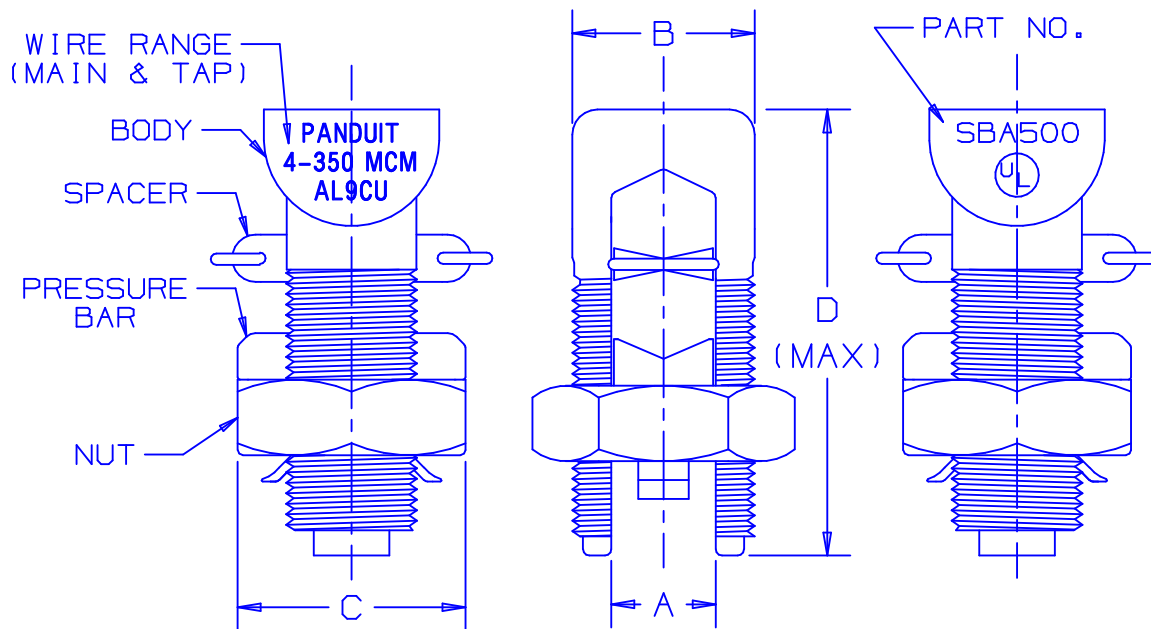


PART NUMBER	WIDTH "A"	BODY WIDTH "B"	NUT HEX "C"	LENGTH "D"	THREAD	TIGHTENING TORQUE IN-LB
SBA350	.696	1.50	1.69	3.24	1 3/8"-12UNF	650
SBA500	.843	1.73	2.00	3.62	1 5/8"-12UN	825

PART NUMBER	ALUM. TO ALUM., ALUM TO COPPER, COPPER TO COPPER CONDUCTORS					
	MAX. RUN TO MAX. TAP		MIN. RUN TO MIN. TAP		MAX. RUN TO MIN. TAP	
SBA350	350MCM (.681)	350MCM (.681)	1/0 STR (.336) (COMPACT)	#4 STR (.132)	350MCM (.681)	#4 STR (.232)
SBA500	500MCM (.813)	500MCM (.813)	400MCM (.659) (COMPACT)	#2 STR (.268) (COMPACT)	500MCM (.813)	#2 STR (.268) (COMPACT)



NOTES:

1. ALL SPLIT BOLT COMPONENTS ARE ALUMINUM ALLOY MATERIAL.
2. SPLIT BOLT BODY, SPACER AND PRESSURE BAR ARE ELECTRO TIN PLATED.
4. U/L LISTED PER UL486B- 90°C RATED.
5. FOR INSTALLATION OF 90° C MAX RATED CONDUCTORS IN NEC APPLICATIONS THERE IS NO NEED TO SCRATCH BRUSH AND NO NEED TO USE OXIDE INHIBITING COMPOUND. FOR ALL OTHER APPLICATIONS OXIDE INHIBITING COMPOUND IS RECOMMENDED.
6. RATED FOR ALUMINUM TO ALUMINUM, ALUMINUM TO COPPER AND COPPER TO COPPER CONDUCTORS.

C41299_00

0	1-01	EJS		RELEASED				
REV	DATE	BY	CHK	DESCRIPTION	ECN #	CUST	PM	

PANDUIT CORP.

TINLEY PARK, ILLINOIS

ALUMINUM SPLIT BOLT CONNECTORS
350 THRU 500 MCM

DRAWN BY EJS	CHK'D	SCALE NONE	DRAWING NO. A41151
-----------------	-------	---------------	-----------------------