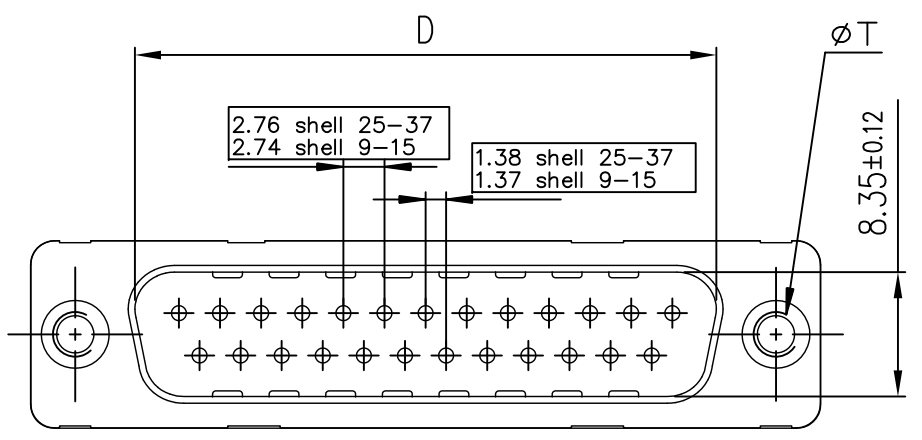
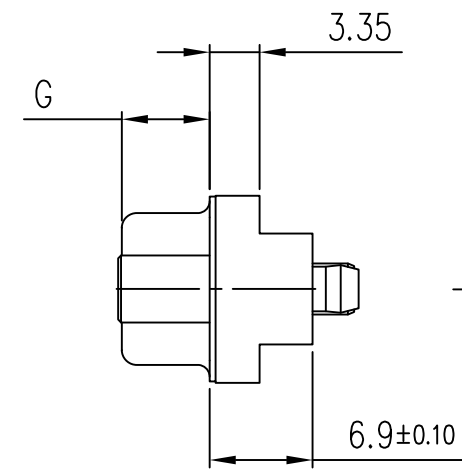
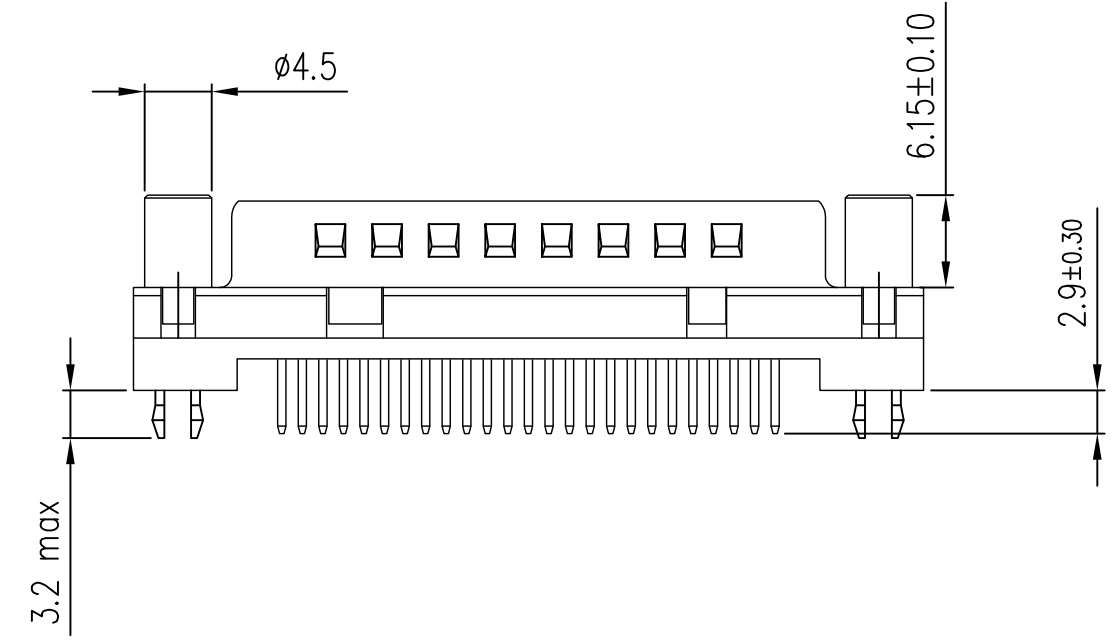
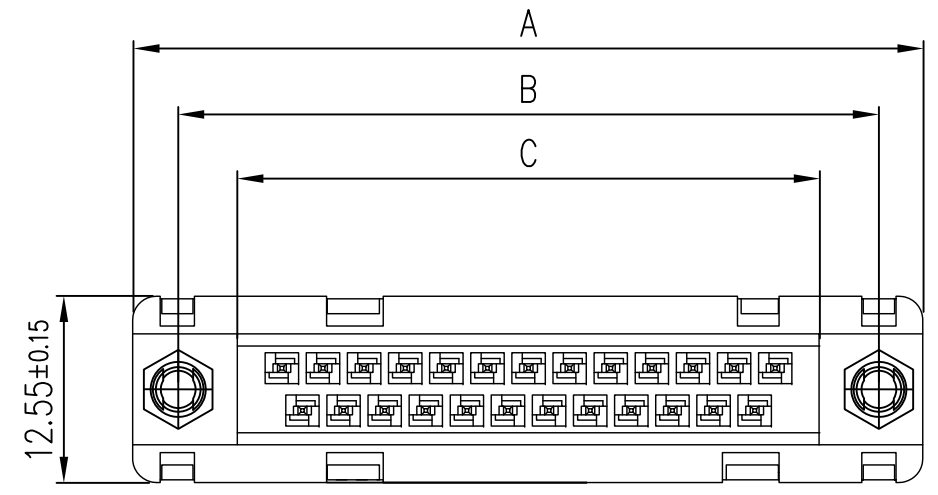


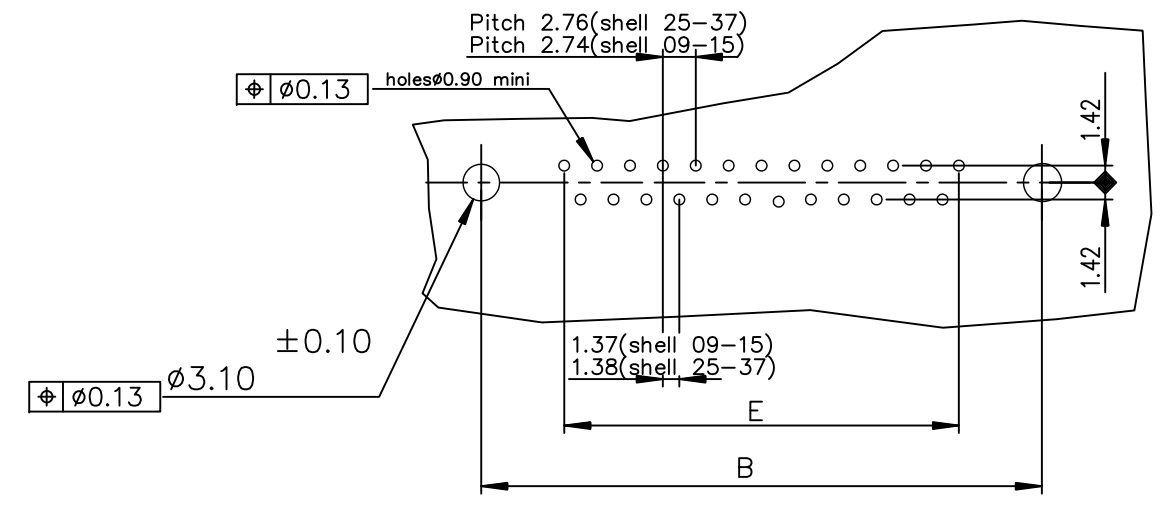


FCIconnect.com

Copyright FCI



PC card drilling dimensions(after plating)
(thickness 1.60±0.20mm)



SHELL	A±0.38	B±0.12	C±0.10	D±0.25	E±0.07	G	PART NUMBER	
							200 Mating cycles	500 Mating cycles
09	30.81	24.99	16.96	16.79	10.96	5.90±0.15	D09P34A4**00LF	D09P34A6**00LF
15	39.14	33.32	25.18	25.12	19.18	5.90±0.15	D15P34A4**00LF	D15P34A6**00LF
25	53.03	47.04	39.12	38.84	33.12	5.70±0.25	D25P34A4**00LF	D25P34A6**00LF
37	69.32	63.50	55.68	55.30	49.68	5.70±0.25	D37P34A4**00LF	D37P34A6**00LF

GV-> ØT=UNC 4-40
GI-> ØT=M3

GENERAL CHARACTERISTICS SEE: DRAWING C01-8646-0000

mat'l. code		surface ISO 1302 ✓		tolerance ISO 406 ISO 1101		projection		product family D-SUB	
ltr		ecn no		dr		date		title	
C		ELX-I-20030		AB		2015-01-20		MALE FOR FOOTPRINT 6.90 STRAIGHT SOLDER TYPE	
angles		linear		.0±0.1		.00±0.1		MM	
0°±2°				.000±0.1		scale 2:1		size	
dr		PESSON		2000-12-14		engr		ALIAS BABU 2015-01-20	
chr		MITHUN PAUL		2015-01-20		appd		BIJU K PAUL 2015-01-20	
sheet index		revision sheet		C 1		dwg no		sheet 1 of 1	
						C01-8646-0746		A3	
						type		Product Customer Drawing	