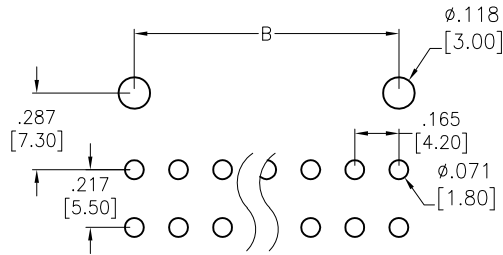
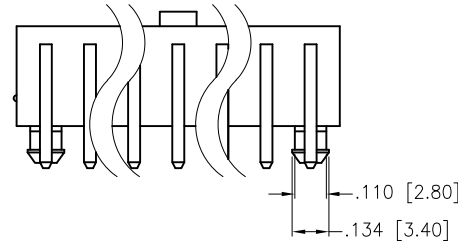
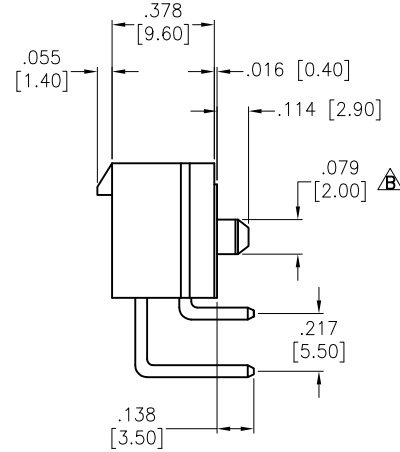
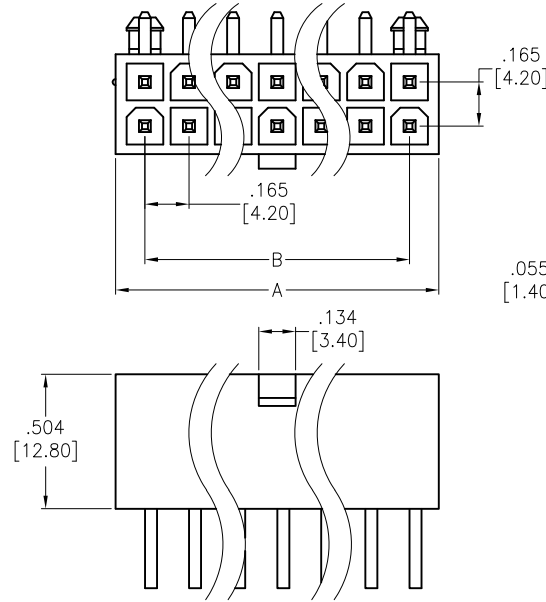


APPROVED: _____
 DATE: _____ TITLE: _____

Rev	AWO #	Description	Date	Appr
-		RELEASED	8/19/04	
A		REDRAWN	3/20/14	HR/LW
B		UPDATE DIM.	3/20/14	HR/LW



RECOMMENDED PCB LAYOUT



Positions: 02 thru 24

A = .165 [4.20] x No. of Positions per Row + .047 [1.20]

B = .165 [4.20] x No. of Spaces

SPECIFICATIONS:

Material:
 Insulator: Nylon66, rated UL94V-2
 Insulator color: Natural
 Contacts: Brass
Plating:
 Tin over Copper underplate overall
Electrical:
 Operating voltage: 600 V max.
 Current rating: 9 Amps
 Contact resistance: 10 mohms max
 Dielectric withstanding voltage: 1,500 VAC for 1 minute
Temperature Rating:
 Operating temperature: -40°C to +105°C
Environmental:
 Lead free, RoHS compliant.



UNLESS OTHERWISE SPECIFIED ALL DIMENSIONS ARE INCHES [MM] TOLERANCES: EXCEPT AS NOTED			
INCHES		HOLES	
.X	± .10	∅X	± .10
.XX	± .020	∅XX	± .015
.XXX	± .015	∅XXX	± .010

APPROVALS		DATE
DRAWN	SS	8/19/04
CHECKED		
APPROVED		

ADAM TECH

909 Rahway Avenue, Union, NJ 07083
 Phone: 908-687-5000 Fax: 908-687-5710

TITLE
**RIGHT ANGLE HOUSING, MALE TERMINAL
 PCB MOUNT WITH PEGS**

SIZE	PART NO.	REV.
X	DMF-XX-R-N-P	A
REF: S00123T	SCALE: NTS	SHEET 1 OF 2

6

5

4

3

2

1

APPROVED: _____

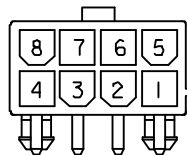
DATE: _____ TITLE: _____

Rev	AWO #	Description	Date	Appr
-----	-------	-------------	------	------

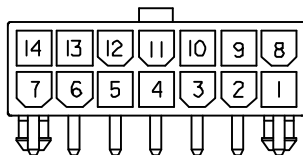
SEE SHT 1 OF 2 FOR REVISION



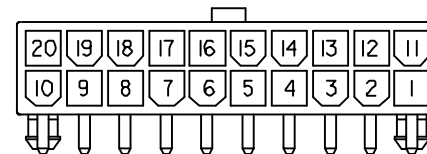
2 POSITION



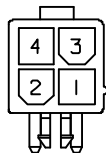
8 POSITION



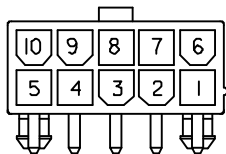
14 POSITION



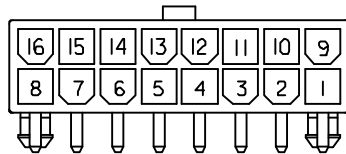
20 POSITION



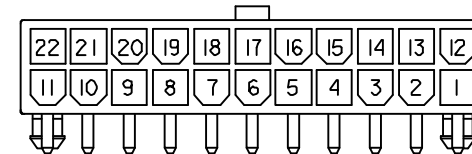
4 POSITION



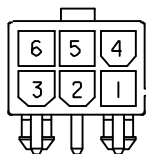
10 POSITION



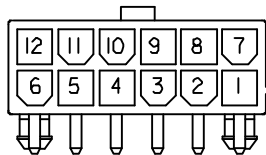
16 POSITION



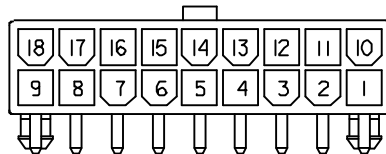
22 POSITION



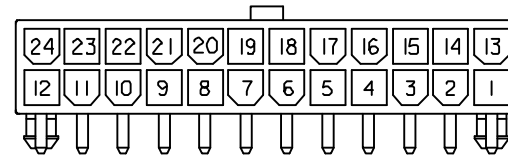
6 POSITION



12 POSITION



18 POSITION



24 POSITION

Current Rating and Wire Size

Wire Size	Circuits			
	2	4 & 6	8 & 10	12~24
#18	9A	8A	7A	6A
#20	7A	6A	5A	5A
#22	5A	4A	4A	4A
#24	4A	3A	3A	3A

UNLESS OTHERWISE SPECIFIED
 ALL DIMENSIONS ARE MM [INCHES]
 TOLERANCES: EXCEPT AS NOTED
 INCHES HOLES

.X ± .10	∅X ± .10
.XX ± .020	∅XX ± .015
.XXX ± .015	∅XXX ± .010

ADAM TECH

909 Rahway Avenue, Union, NJ 07083
 Phone: 908-687-5000 Fax: 908-687-5710

TITLE: RIGHT ANGLE HOUSING, MALE TERMINAL
 PCB MOUNT WITH PEGS

APPROVALS		DATE
DRAWN	SS	8/19/04
CHECKED		
APPROVED		

SIZE X	PART NO. DMF-XX-R-N-P	REV. B
REF: S00123T	SCALE: NTS	SHEET 2 OF 2

6

5

4

3

2

1