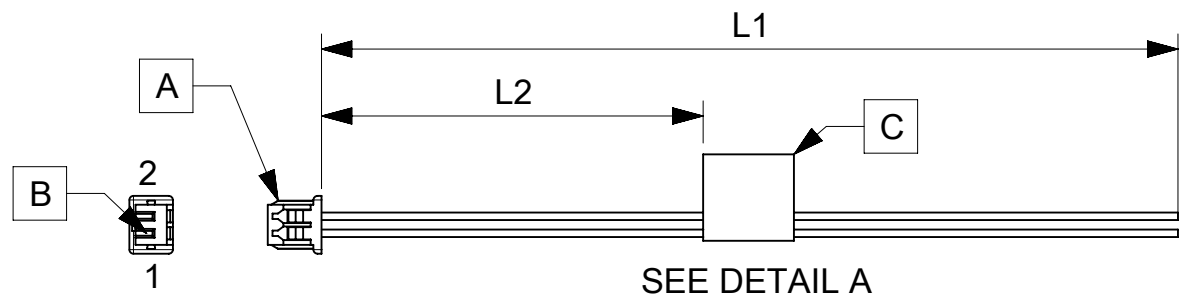


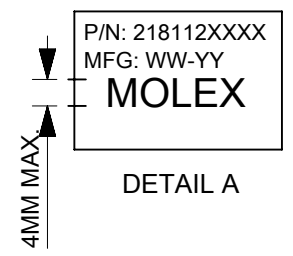
ITEM	PART#	DESCRIPTION	QTY	UOM
A	510210200	PicoBlade1.25 Rec Hsg 2P	1	PC
B	500588000	PicoBlade1.25 Crimp Rec Term Chain Tin	2	PC
C	--	Blank label 12.7x35.5mm (WHT:12.7mm) HF	1	PC

FROM	TO	DESCRIPTION	COLOR
A1	--	CABLE 28 AWG UL 1061 BLACK	BLACK
A2	--	CABLE 28 AWG UL 1061 BLACK	BLACK



SEE DETAIL A

TABLE			
PART NUMBER	L1	L2 (REF)	TITLE
2181120200	75±5	30	2 CIRCUIT PICOBLADE R:BLUNT CABLE 75MM
2181120201	150±6	70	2 CIRCUIT PICOBLADE R:BLUNT CABLE 150MM
2181120202	225±6	105	2 CIRCUIT PICOBLADE R:BLUNT CABLE 225MM
2181120203	300±8	145	2 CIRCUIT PICOBLADE R:BLUNT CABLE 300MM
2181120204	425±8	205	2 CIRCUIT PICOBLADE R:BLUNT CABLE 425MM



- NOTES
1. Connector view shown is from mating side.
 2. Free ends must be blunt cut.
 3. Label text must be 2mm max. in height with Arial font.
 4. Label must be wrapped in flag type on the cables.

REVISION			
DATE	REV	DESCRIPTION	CHANGER
04/03/2021	A	INITIAL RELEASE	ARAJU

DOCUMENT STATUS	P1	RELEASE DATE	2021/03/26	04:03:43
-----------------	----	--------------	------------	----------

FUNCTIONAL SYMBOLS $\frac{E}{A} = 0$ $\frac{E}{E} = 0$ $\frac{E}{P} = 0$ DIVISIONAL SYMBOLS	THIS DRAWING CONTAINS INFORMATION THAT IS PROPRIETARY TO MOLEX ELECTRONIC TECHNOLOGIES, LLC AND SHOULD NOT BE USED WITHOUT WRITTEN PERMISSION		CURRENT REV DESC:		 SEE TABLE PRODUCT CUSTOMER DRAWING
	DIMENSION UNITS	SCALE	EC NO: 659320		
	mm	NTS	DRWN: ARAJU 2021/03/04		
	GENERAL TOLERANCES (UNLESS SPECIFIED)		CHK'D: RDESAI01 2021/03/26		
	ANGULAR TOL ± °		APPR: RDESAI01 2021/03/26		
4 PLACES	±	INITIAL REVISION:			
3 PLACES	±	DRWN: ARAJU 2021/03/04			
2 PLACES	±	APPR: RDESAI01 2021/03/26			
1 PLACE	±	DOCUMENT NUMBER			
0 PLACES	±	2181120200			
DRAFT WHERE APPLICABLE MUST REMAIN WITHIN DIMENSIONS		THIRD ANGLE PROJECTION	DRAWING	SERIES	DOC TYPE
			A4-SIZE	218112	PSD
					DOC PART
					000
					REVISION
					A
					SHEET NUMBER
					1 OF 1