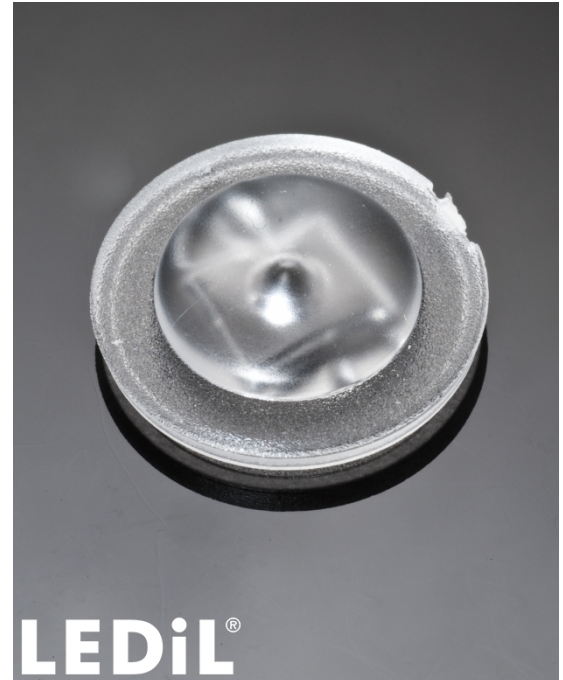


JULIA-A

~90° + 160° wide beam. Assembly with installation tape.

SPECIFICATION:

Dimensions	Ø 18.8 mm
Height	4.8 mm
Fastening	tape, pin
ROHS compliant	yes ⓘ

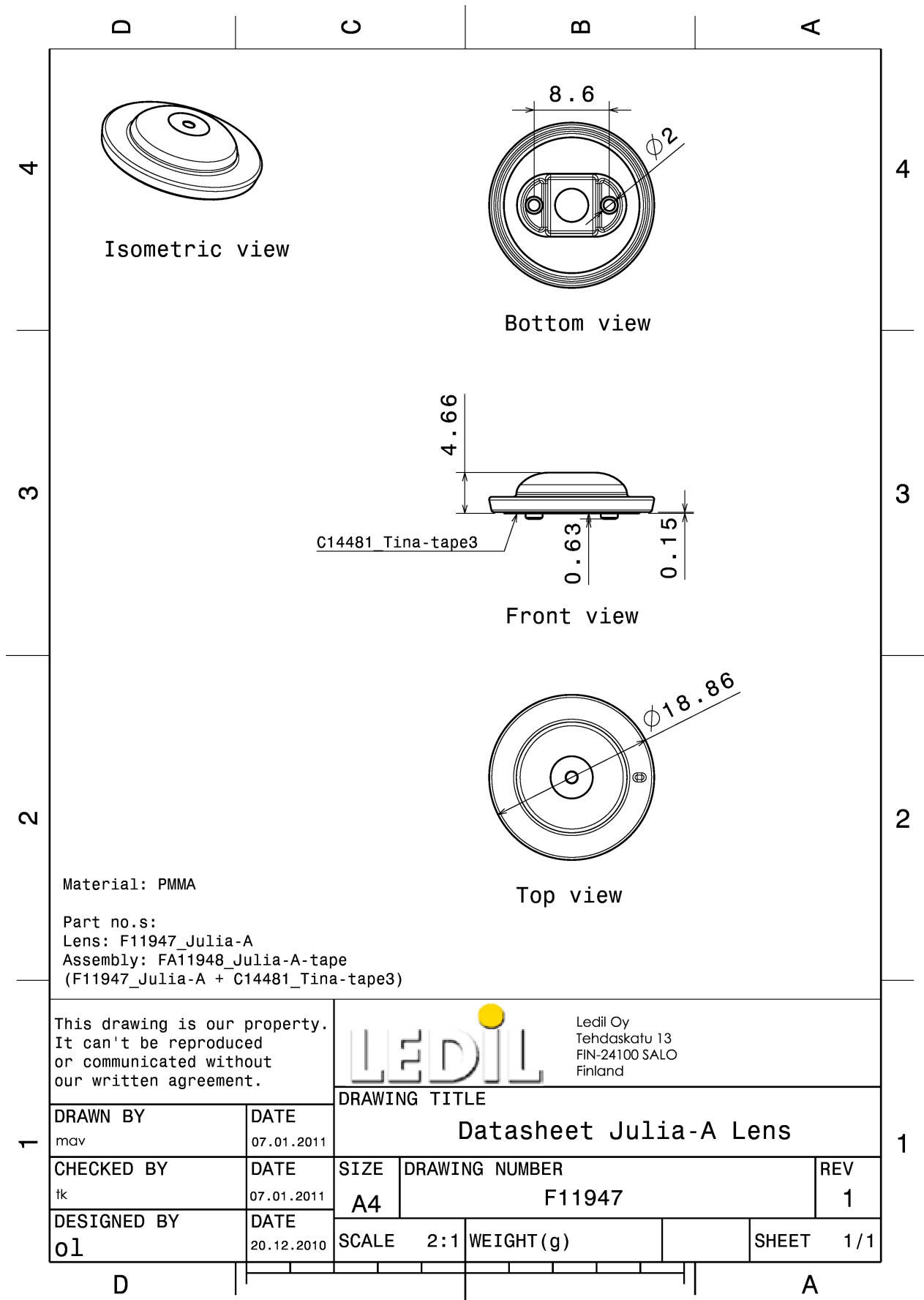


MATERIALS:

Component	Type	Material	Colour	Finish
JULIA-A	Single lens	PMMA	clear	
TINA-TAPE3	Tape	Acrylic foam	black	

ORDERING INFORMATION:

Component		Qty in box	MOQ	MPQ	Box weight (kg)
FA11948_JULIA-A	Single lens	2850	300	150	3.7
» Box size:					



See also our general installation guide: www.ledil.com/installation_guide

OPTICAL RESULTS (MEASURED):

CREE LED

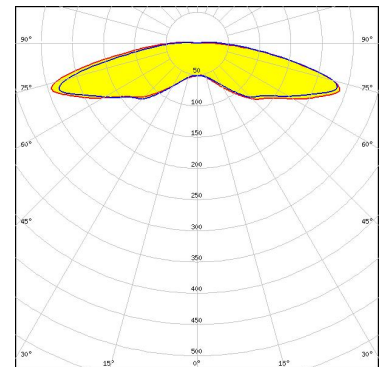
LED XP-E
FWHM / FWTM 164.0°
Efficiency 90 %
Peak intensity 0.2 cd/lm
LEDs/each optic 1
Light colour White
Required components:

CREE LED

LED XP-G
FWHM / FWTM 166.0°
Efficiency 90 %
Peak intensity 0.2 cd/lm
LEDs/each optic 1
Light colour White
Required components:

CREE LED

LED XP-G3
FWHM / FWTM 166.0° / 187.0°
Efficiency 85 %
Peak intensity 0.2 cd/lm
LEDs/each optic 1
Light colour White
Required components:



LUMILEDS

LED LUXEON Rebel
FWHM / FWTM 154.0°
Efficiency 90 %
Peak intensity 0.3 cd/lm
LEDs/each optic 1
Light colour White
Required components:

OPTICAL RESULTS (MEASURED):

LUMILEDS

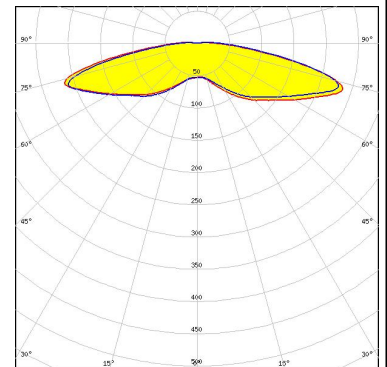
LED LUXEON Rebel ES
FWHM / FWTM 163.0°
Efficiency 90 %
Peak intensity 0.2 cd/lm
LEDs/each optic 1
Light colour White
Required components:

NICHIA

LED NCSxx19A
FWHM / FWTM 156.0°
Efficiency 90 %
Peak intensity 0.2 cd/lm
LEDs/each optic 1
Light colour White
Required components:

NICHIA

LED NVSW219F
FWHM / FWTM 166.0° / 186.0°
Efficiency 82 %
Peak intensity 0.2 cd/lm
LEDs/each optic 1
Light colour White
Required components:



NICHIA

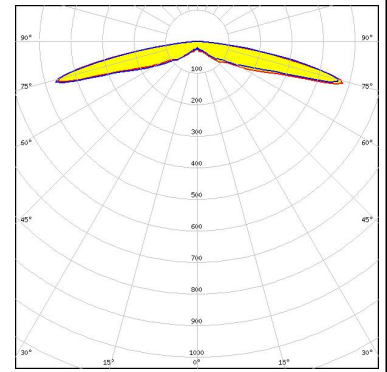
LED NVSxx19A
FWHM / FWTM 159.0°
Efficiency 90 %
Peak intensity 0.2 cd/lm
LEDs/each optic 1
Light colour White
Required components:

OPTICAL RESULTS (MEASURED):

OSRAM

Opto Semiconductors

LED OSLON SSL 150
FWHM / FWTM 159.0°
Efficiency 90 %
Peak intensity 0.3 cd/lm
LEDs/each optic 1
Light colour White
Required components:



OSRAM

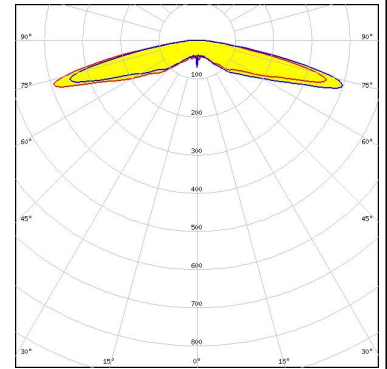
Opto Semiconductors

LED OSLON SSL 80
FWHM / FWTM 158.0°
Efficiency 90 %
Peak intensity 0.2 cd/lm
LEDs/each optic 1
Light colour White
Required components:

SEOL

SEOUL SEMICONDUCTOR

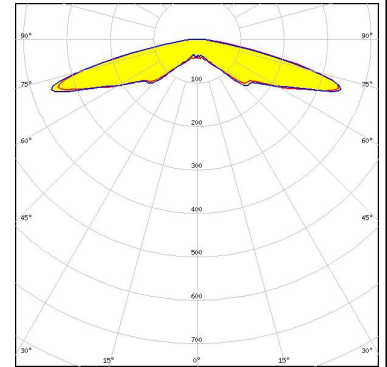
LED Z5
FWHM / FWTM 160.0°
Efficiency 86 %
Peak intensity 0.2 cd/lm
LEDs/each optic 1
Light colour White
Required components:



OPTICAL RESULTS (SIMULATED):

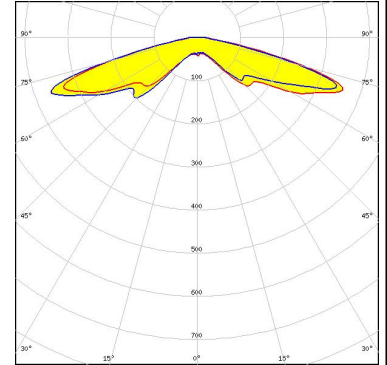
CREE LED

LED J Series 2835
 FWHM / FWTM 155.0° / 169.0°
 Efficiency 93 %
 Peak intensity 0.4 cd/lm
 LEDs/each optic 1
 Light colour White
 Required components:



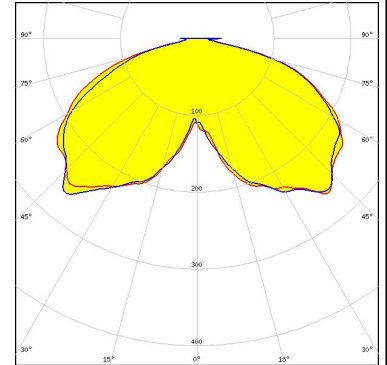
CREE LED

LED J Series 3030
 FWHM / FWTM 153.0° / 166.0°
 Efficiency 93 %
 Peak intensity 0.4 cd/lm
 LEDs/each optic 1
 Light colour White
 Required components:



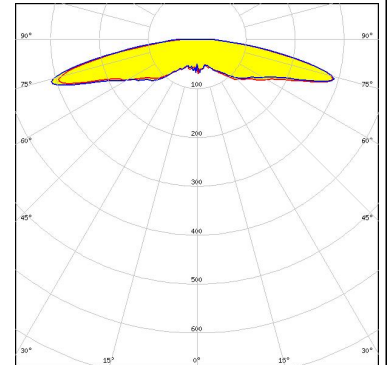
CREE LED

LED XE-G
 FWHM / FWTM 141.0° / 169.0°
 Efficiency 97 %
 Peak intensity 0.3 cd/lm
 LEDs/each optic 1
 Light colour White
 Required components:

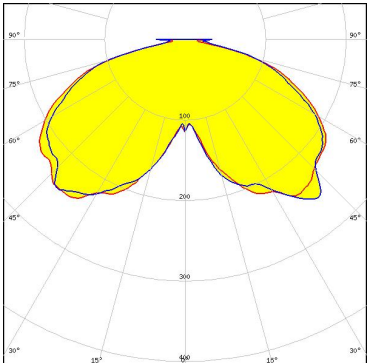
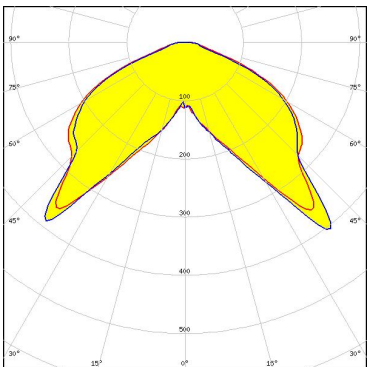
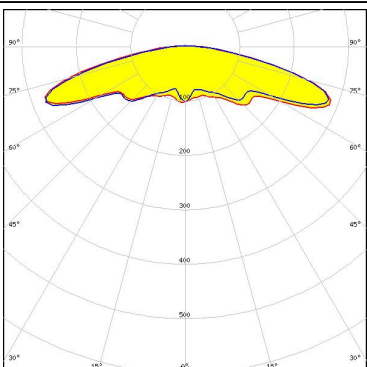
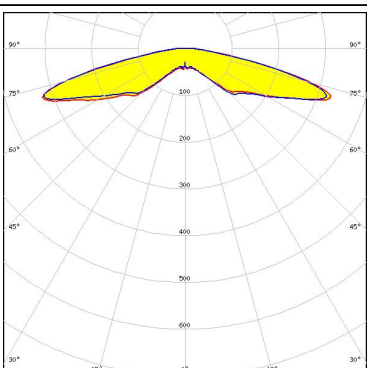


CREE LED

LED XP-G2 HE
 FWHM / FWTM 162.0° / 180.0°
 Efficiency 89 %
 Peak intensity 0.3 cd/lm
 LEDs/each optic 1
 Light colour White
 Required components:



OPTICAL RESULTS (SIMULATED):

<p>LUMILEDS</p> <p>LED: LUXEON IR Compact FWHM / FWTM: 141.0° / 167.0° Efficiency: 97 % LEDs/each optic: 1 Light colour: IR Required components:</p>	
<p>OSRAM Opto Semiconductors</p> <p>LED: Duris E 2835 FWHM / FWTM: 122.0° / 150.0° Efficiency: 98 % Peak intensity: 0.4 cd/lm LEDs/each optic: 1 Light colour: White Required components:</p>	
<p>SAMSUNG</p> <p>LED: LH351C FWHM / FWTM: 158.0° / 176.0° Efficiency: 95 % Peak intensity: 0.3 cd/lm LEDs/each optic: 1 Light colour: White Required components:</p>	
<p>SAMSUNG</p> <p>LED: LM301B FWHM / FWTM: 156.0° / 172.0° Efficiency: 90 % Peak intensity: 0.3 cd/lm LEDs/each optic: 1 Light colour: White Required components:</p>	

GENERAL INFORMATION:

NOTE: The typical beam angle will be changed by different color, chip size and chip position tolerance. The typical total beam angle is the full angle measured where the luminous intensity is half of the peak value.

MATERIALS:

As part of our continuous research and improvement processes, and to ensure the best possible quality and availability of our products, LEDiL reserves the right to change material grades without notice.

PRODUCT DATA USER AGREEMENT AND DISCLAIMER:

The measured data in the provided downloadable LEDiL Product Datasheets and Mechanical 2D-Drawings is rounded and provided as reference for planning. LEDiL Oy's optical specifications have been verified by conducting performance testing of the products in accordance with the company's quality system. The reported data are averaged results of multiple measurements with typical variation. LEDiL Oy reserves the right to without prior notification make changes and improvements to its products.

LEDiL Oy assumes neither warranty, nor guarantee nor any other liability of any kind for the contents and correctness of the provided data. The provided data has been generated with highest diligence but the provided data may in reality not represent the complete possible variation range of all intrinsic parameters. Therefore, in certain cases a deviation from the provided data could occur.

LEDiL Oy reserves the right to undertake technical changes of its products without further notification which could lead to changes in the provided data. LEDiL Oy assumes no liability of any kind for the possible deviation from any provided data or any other damage resulting from the usage of the provided data.

The user agrees to this disclaimer and user agreement with the download or usage of the provided files.

LEDiL Oy

Joensuunkatu 13
FI-24240 SALO
Finland

LEDiL Inc.

228 West Page Street
Suite D
Sycamore IL 60178
USA

Ledil Optics Technology (Shenzhen) Co., Ltd.

405 , Block B
Casic Motor Building
Shenzhen 518057
P.R.CHINA

Local sales and technical support

[www.ledil.com/
where_to_buy](http://www.ledil.com/where_to_buy)

Shipping locations

Salo, Finland
Hong Kong, China

Distribution Partners

[www.ledil.com/
where_to_buy](http://www.ledil.com/where_to_buy)