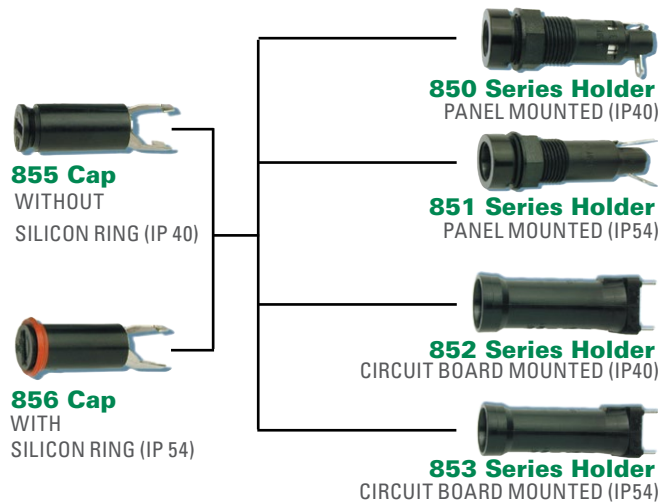




## 850/851/852/853 Series Enclosed Fuse Holders for 5x20mm Fuses



Agency Approval	
Agency	Agency File Number
	850 and 851 - 40034355 852 and 853 - 40033885
	E70164

### Additional Information

-  **Datasheet 850 Series**
-  **Datasheet 851 Series**
-  **Datasheet 852 Series**
-  **Datasheet 853 Series**

-  **Resources 850 Series**
-  **Resources 851 Series**
-  **Resources 852 Series**
-  **Resources 853 Series**

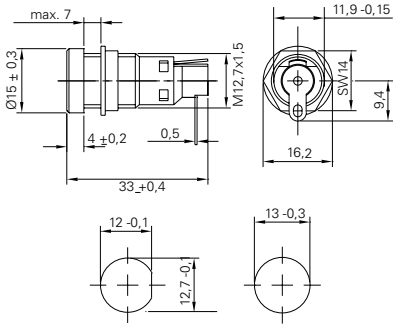
-  **Samples 850 Series**
-  **Samples 851 Series**
-  **Samples 852 Series**
-  **Samples 853 Series**

### Product Characteristics

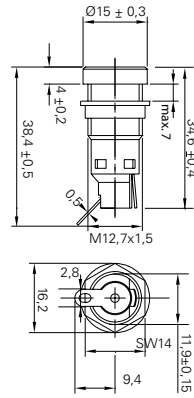
	850/851 Series	852/853 Series
<b>Compatible Fuse</b>	5x20mm	
<b>Materials</b>	<b>Holder:</b> Black Thermoplastic <b>Cap:</b> Black Thermoplastic Both UL94V0	
	<b>Sealing Ring:</b> Silicon (Cap 856)	
	<b>Metal Parts:</b> Copper alloy, corrosion protected	
	<b>Terminals:</b> Solderable tinned	
<b>Electrical Data (23°C)</b>	<b>Rated Voltage:</b> 250V	
	<b>Rated Current:</b> 10A (UL and VDE)	<b>Rated Current:</b> 6.3A (VDE) 12A (UL)
	<b>Rated Power:</b> 3.2W (VDE)	<b>Rated Power:</b> 2W (VDE)
<b>Mounting</b>	12.7mm diameter D-hole or 13mm round hole Admissible torque on plastic hex nut is 1.2Nm	(2) Solder pins 0.5mmx1.1mm
<b>Terminals</b>	Solderable only, 4mmx0.5mm (850) Solderable or 2.8mm quick connect - fits 0.5mm tab (851)	
<b>Protection Class &amp; Category</b>	IP 40 (with Cap 855 acc. to IEC 60529) IP 54 (with Cap 856 acc. to IEC 60529) PC2 (IEC 60127-6)	
<b>Operating Temp.</b>	-40°C to +85°C	
<b>Climatic Test</b>	-40°C/+85°C/21 days (IEC 60068-2-1...3)	
<b>Stock Conditions</b>	0°C to 60°C, Max 70% R.H.	
<b>Contact Resistance</b>	≤ 5mΩ at 20mV	
<b>Impulse Voltage</b>	4 kV, 50Hz, 1 min., dry	
<b>Insulation Resistance</b>	> 10 <sup>3</sup> MΩ (500VDC, 1 min.)	
<b>Solderability</b>	350°C/2 sec. acc to IEC 60068-2-20, Test Ta, method 2	235°C/2 sec. acc to IEC 60068-2-20, Test Tb, method 1
<b>Soldering Heat Resistance</b>	350°C/10 sec. acc to IEC 60068-2-20, Test Tb, method 2	260°C/10 sec. acc to IEC 60068-2-20, Test Tb, method 1A
<b>Minimum Cross Section</b>	Conductor - 1.5mm <sup>2</sup>	Conducting path - 0.2mm <sup>2</sup>
<b>Marking</b>	Part No., 250V, Approvals	
<b>Unit Weight</b>	4.1g (850) / 1.8g (855) 4.2g (851) / 1.9g (856)	3.2g (852) / 1.8g (855) 3.2g (853) / 1.9g (856)

**Dimensions**

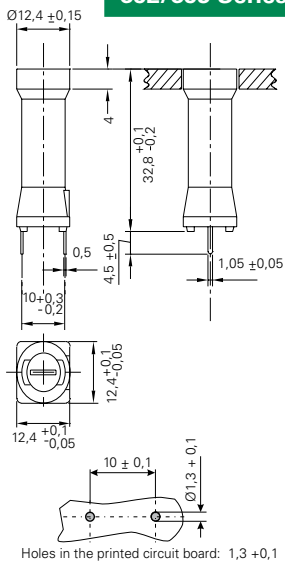
**850 Series**



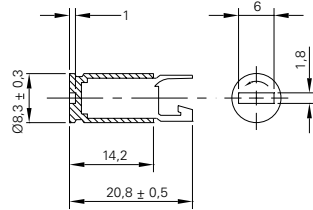
**851 Series**



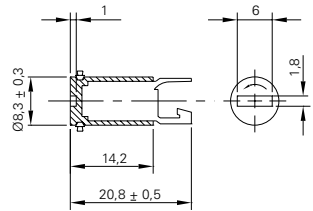
**852/853 Series**



**855 Cap**



**856 Cap**



**Ordering Information**

Description	Ordering Number	Packaging
Cap, w/out ring (IP40)	85500001009	Bulk 100
Cap, w/silicon ring (IP54)	85600001009	Bulk 100
850 Series Holder (IP40)	85000001009	Bulk 100
851 Series Holder (IP54)	85100001009	Bulk 100
852 Series Holder (IP40)	85200001009	Bulk 100
853 Series Holder (IP54)	85300001009	Bulk 100

**Disclaimer Notice** - Information furnished is believed to be accurate and reliable. However, users should independently evaluate the suitability of and test each product selected for their own applications. Littelfuse products are not designed for, and may not be used in, all applications. Read complete Disclaimer Notice at: [www.littelfuse.com/disclaimer-electronics](http://www.littelfuse.com/disclaimer-electronics).