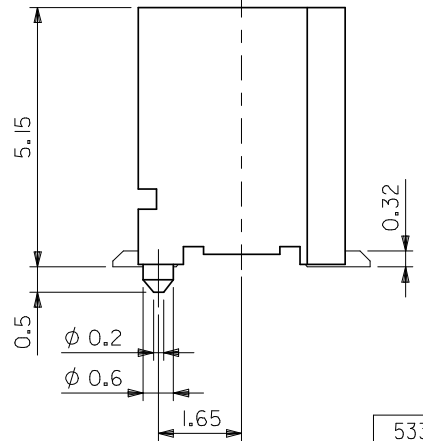


注記 NOTES

1. 嵌合相手: 52465 シリーズ  
MATES WITH: 52465 SERIES

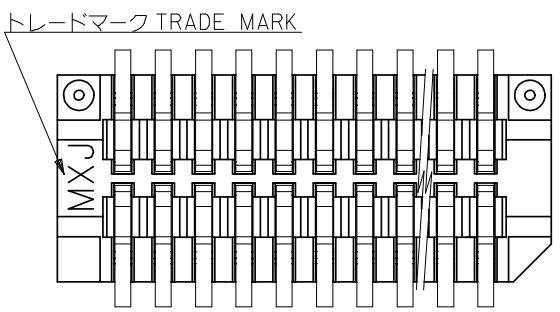
△ ウェハの  $\phi$  から隣接するピンの  $\phi$  迄の位置を示す。  
SHOW POSITION FROM  $\phi$  OF WAFER TO  $\phi$  OF ADJACENT PINS.

3. 本製品は 53364-\*\*17 の鉛フリー品である。  
THIS PRODUCT IS LEAD FREE OF 53364-\*\*17



53364-**19
MODEL NO.

17.0	0.4	17.8	16.9	15.2	53364-4019	40
15.4	0.4	16.2	15.3	13.6	53364-3619	36
13.0	0.8	13.8	12.9	11.2	53364-3019	30
12.2	0.4	13.0	12.1	10.4	53364-2819	28
9.0	0.4	9.8	8.9	7.2	53364-2019	20
8.2	0.8	9.0	8.1	6.4	53364-1819	18
5.8	0.4	6.6	5.7	4.0	53364-1219	12
5.0	0.8	5.8	4.9	3.2	53364-1019	10
E	D	C	B	A	MATERIAL NO.	極数 CKT.



REVISED EC NO: J2008-3931 DRWN: MAKURAA 2008/05/26 CHKD: T. HARIYAMA 2008/05/26 APPR: NUKITA 2008/08/21	DESCRIPTION	GENERAL TOLERANCES (UNLESS SPECIFIED)		DIMENSION STYLE	SCALE	DESIGN UNITS	TITLE 0.8 BOARD TO BOARD CONN. WAFER ASS ST.SMT -LEAD FREE- MOLEX INCORPORATED SD-53364-001	SHEET NO. 1 OF 1
		10 UNDER	$\pm 0.2$	MM ONLY	---	METRIC		
		10 OVER 30 UNDER	$\pm 0.25$	DRAWN BY M. NABEI	DATE	TITLE		
		30 OVER	$\pm 0.3$	CHECKED BY K. TOJO	DATE			
A	REV	ANGULAR	$\pm 3^\circ$	APPROVED BY M. SASAO	DATE	MATERIAL NO.	DOCUMENT NO.	
		DRAFT WHERE APPLICABLE MUST REMAIN WITHIN DIMENSIONS		SIZE A3	THIS DRAWING CONTAINS INFORMATION THAT IS PROPRIETARY TO MOLEX INCORPORATED AND SHOULD NOT BE USED WITHOUT WRITTEN PERMISSION			