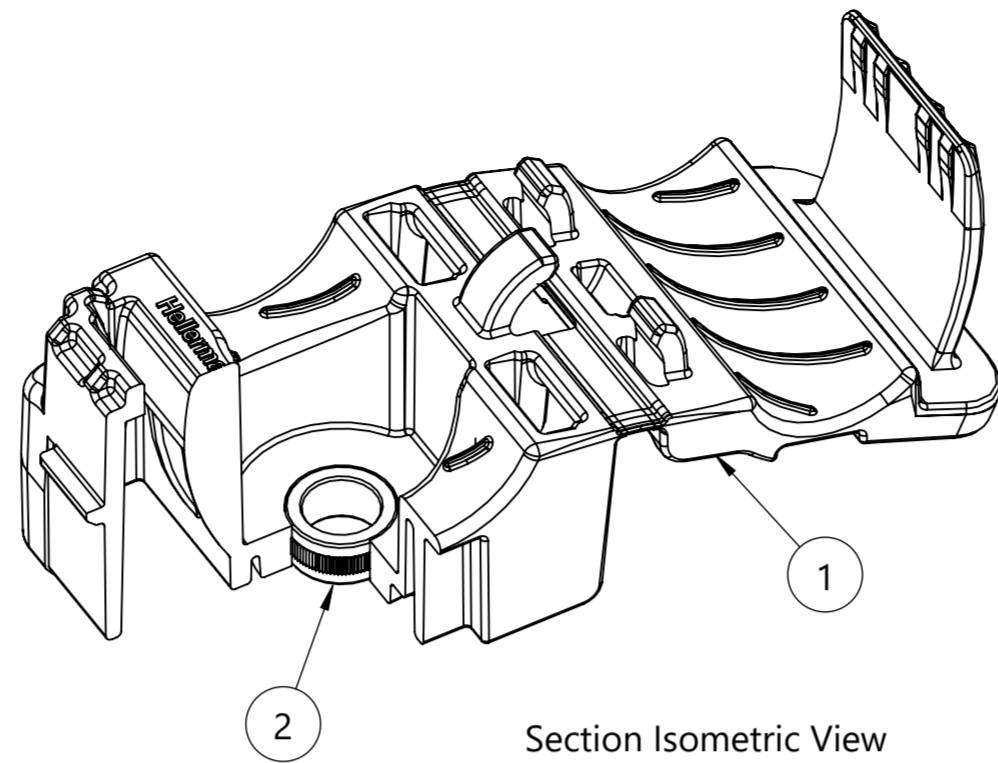
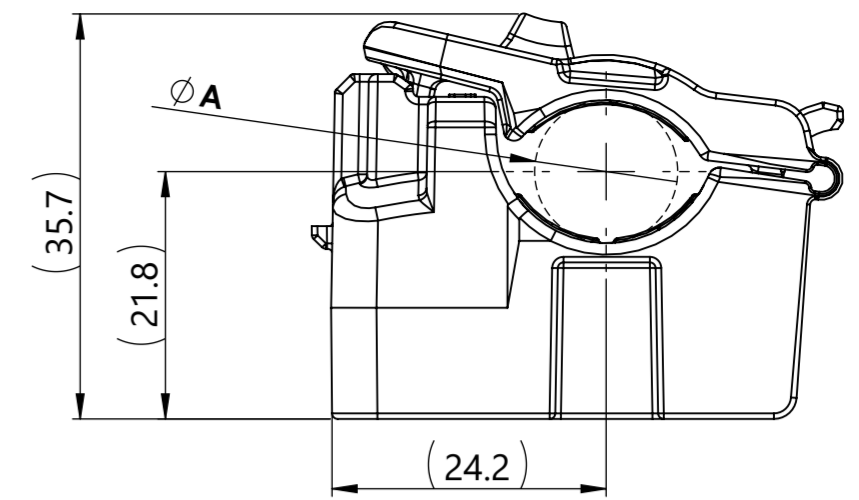


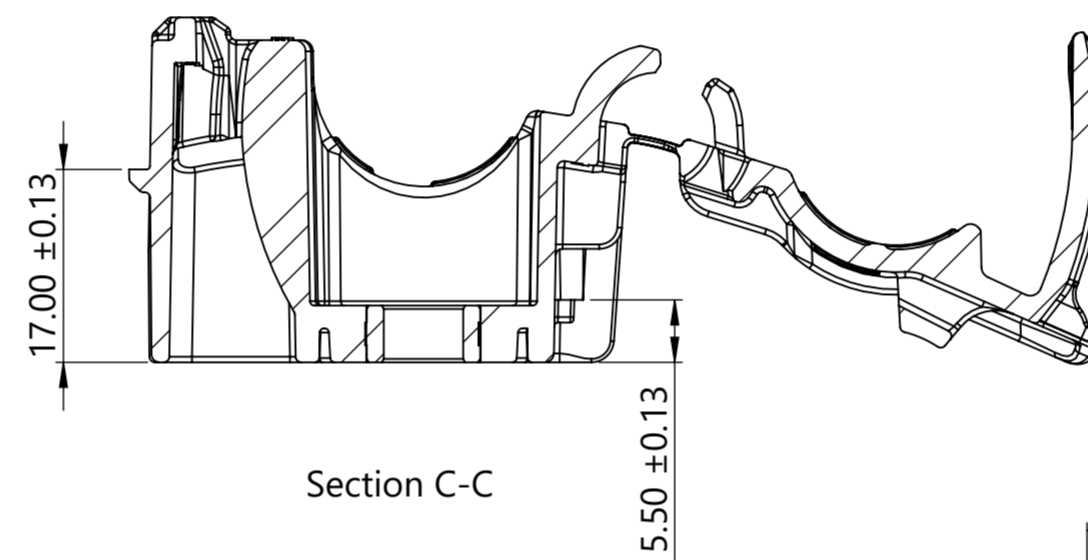
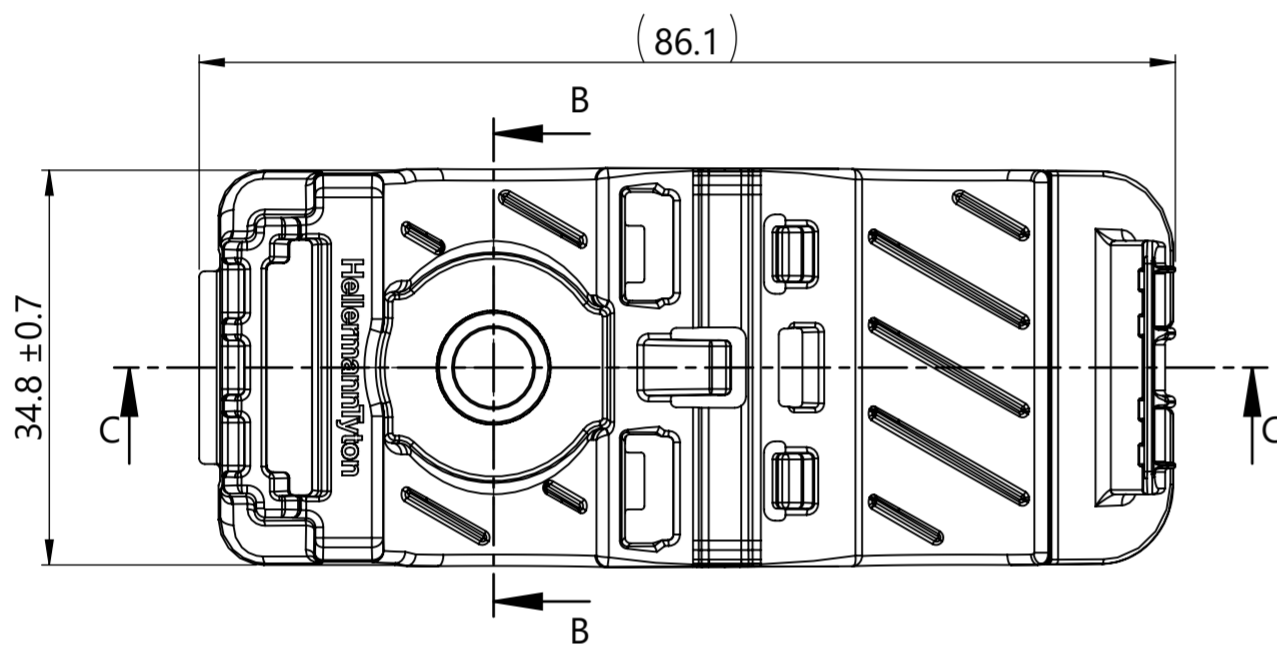
Isometric View
Product shipped in clamp open position



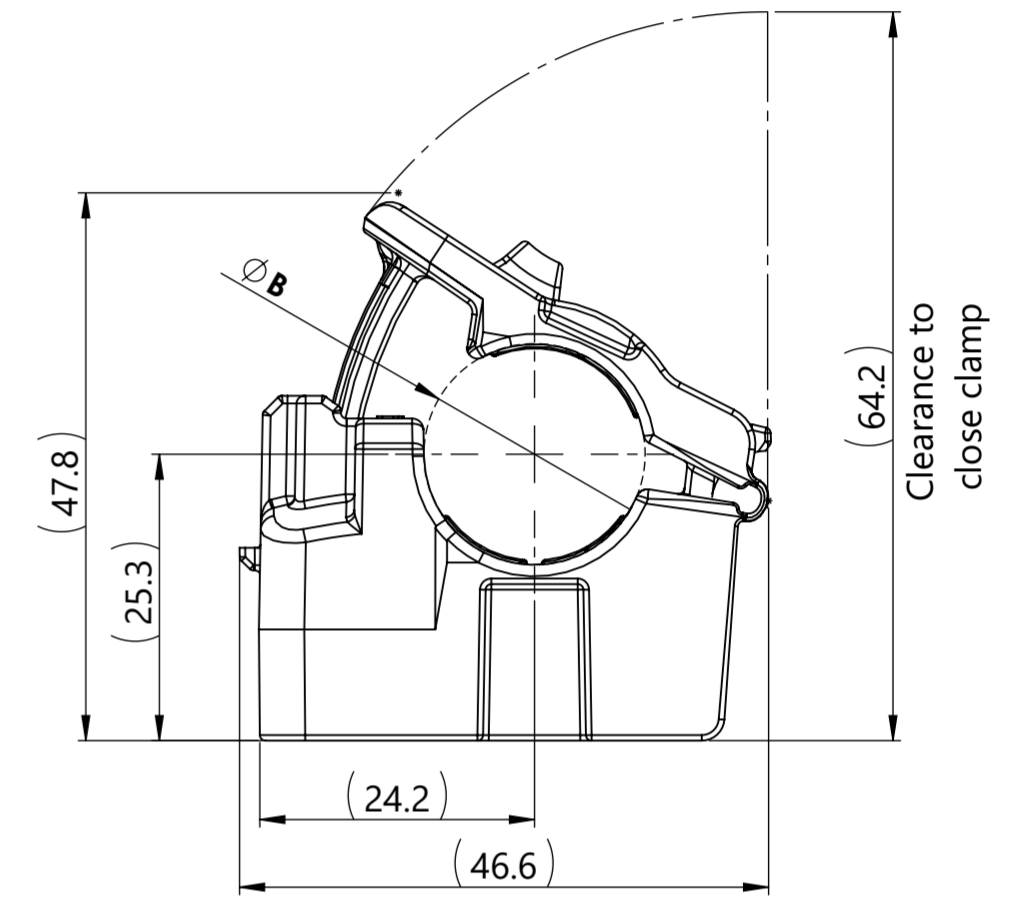
Section Isometric View



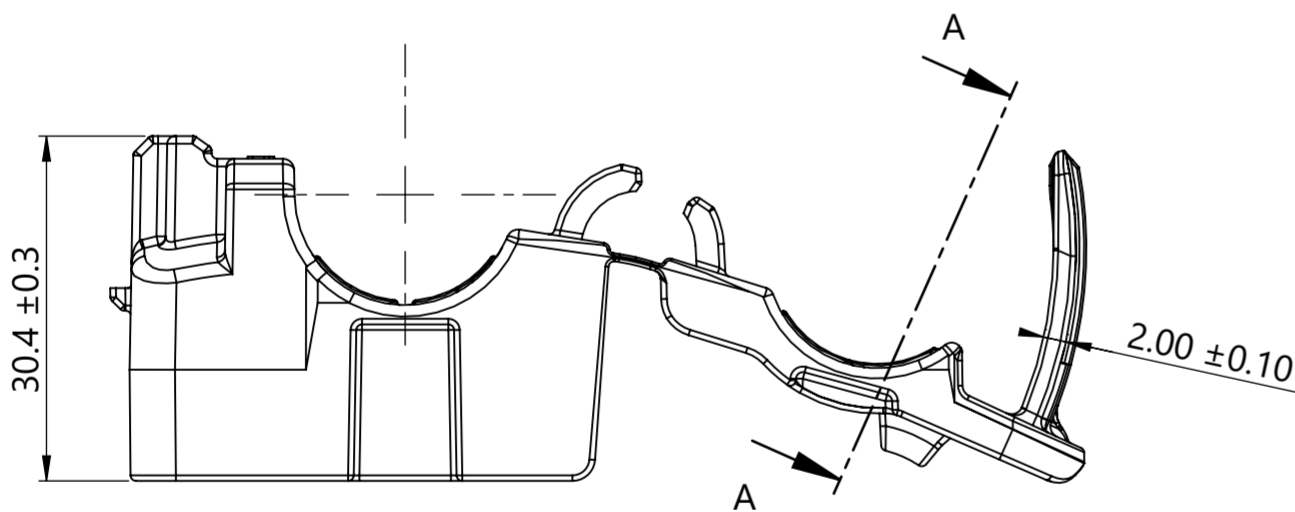
Minimum Bundle Diameter



Section C-C

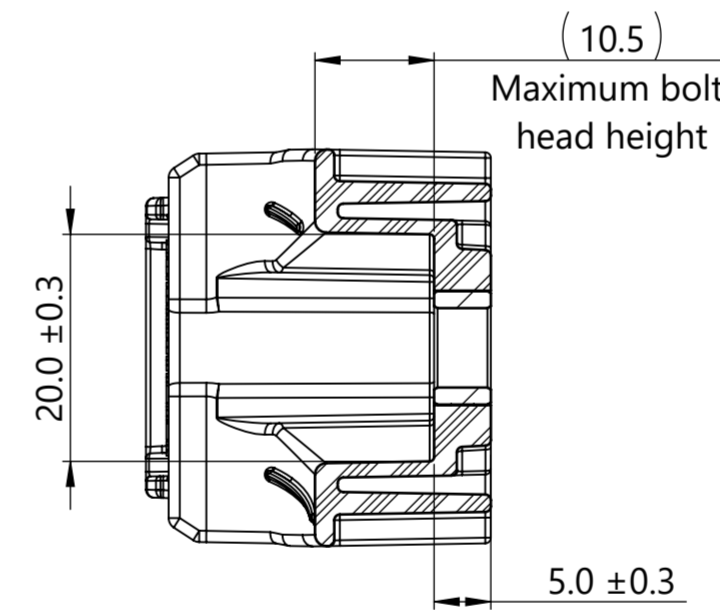


Maximum Bundle Diameter



0.10 Maximum flash or mismatch allowed inside head

0.10 Maximum flash or mismatch allowed around perimeter of strap



Section B-B

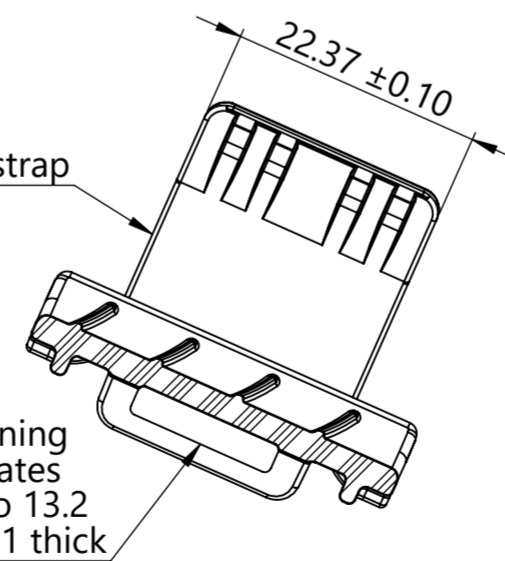
Performance requirements:
Dry as molded with ≤ 0.5% moisture content:

- ITS-0001 Ratchet Clamp Split Mandrel Test: 445 newtons [100 lbf] minimum at a nominal bundle diameter of 15.88 [0.625in]

Notes:

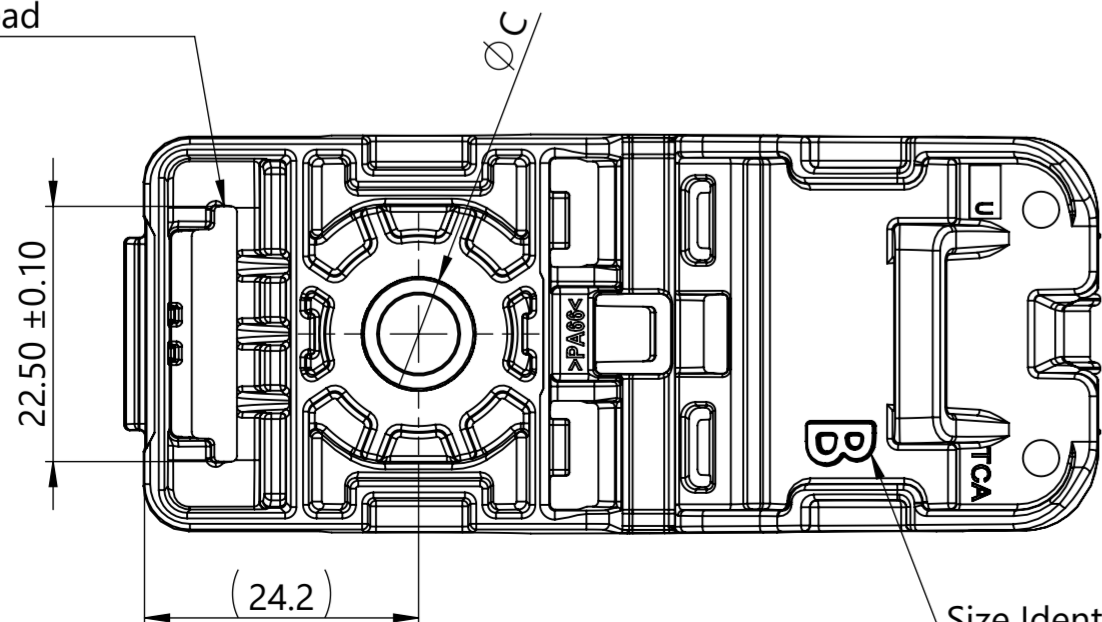
- Material: See chart
- Material color: See chart
- Maximum percent regrind permissible: 25%
- Maximum allowable flash to be: 0.50 "Unless otherwise noted"
- Maximum allowable mismatch to be: 0.15 "Unless otherwise noted"

Bundle Types	A Minimum Diameter	B Maximum Diameter
Soft	12.7 ± 0.3	19.5 ± 0.3
Hard	11.9 ± 0.3	18.7 ± 0.3



Section A-A

Saddle opening accommodates Straps up to 13.2 wide and 2.1 thick



Size Identifier

Revision level			Revision Record		
Drawing	State	Part	ECN 016827		
00.0	Design Release	-			
Changed	Date (YYYY/MM/DD)				
Spangler	2022/01/18				
Approved	Date (YYYY/MM/DD)				
Toll	2022/01/18				

All drawing revision are stored in CAD PDM database

The copyright of this drawing is reserved by HellermannTyton.

Units: mm
HellermannTyton
www.HellermannTyton.com

Revision Record		Title		Scale	
Drawn	Date (YYYY/MM/DD)	CMRCBHM6		3:2	
Spangler	2021/04/09	Center Mount RCB Ratchet P-Clamp, Size B, Clamp Range 12.7 to 19.5, High Torque		Global Project Number 21-0218	
Approved	Date (YYYY/MM/DD)			Format A2	
Toll	2021/04/09			Sheet 1/1	
Drawing-No		21-0218-102-CSU			