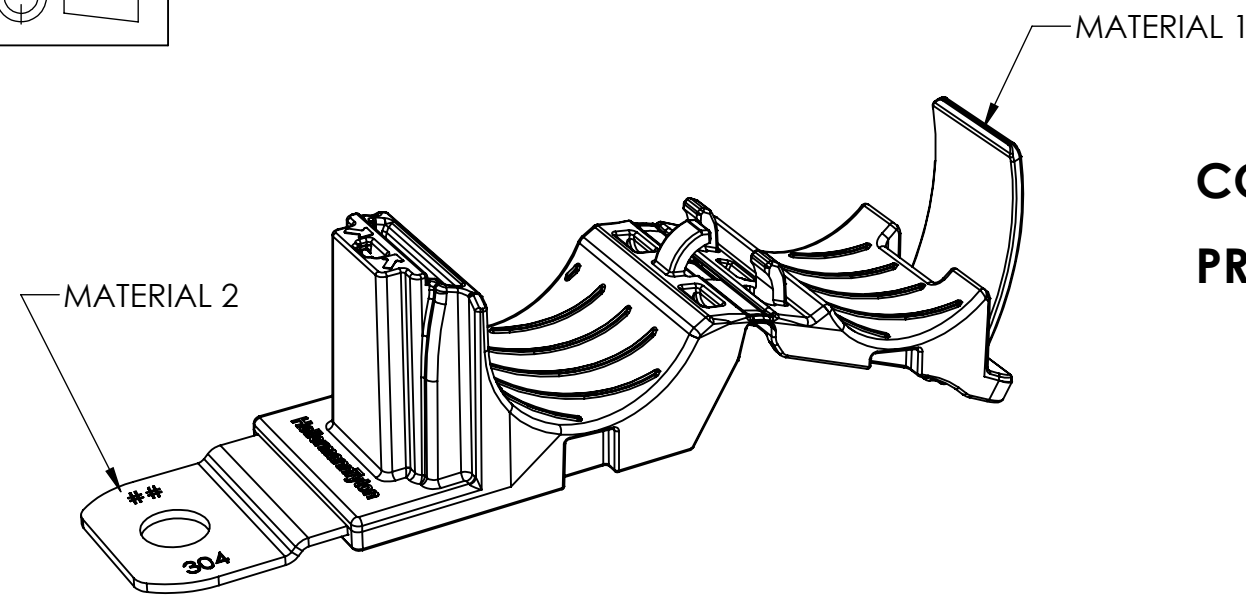
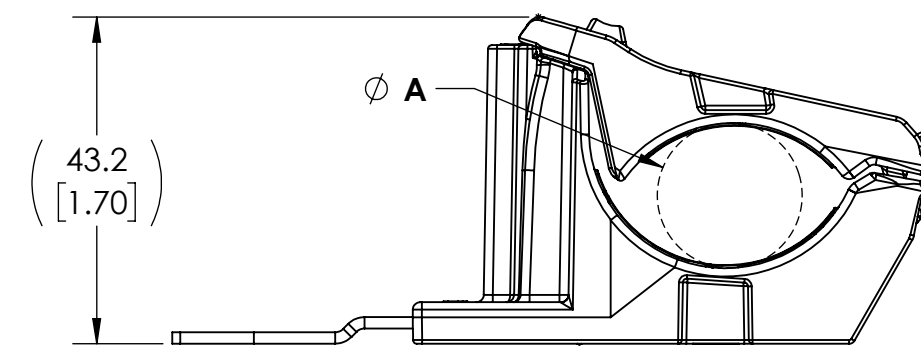
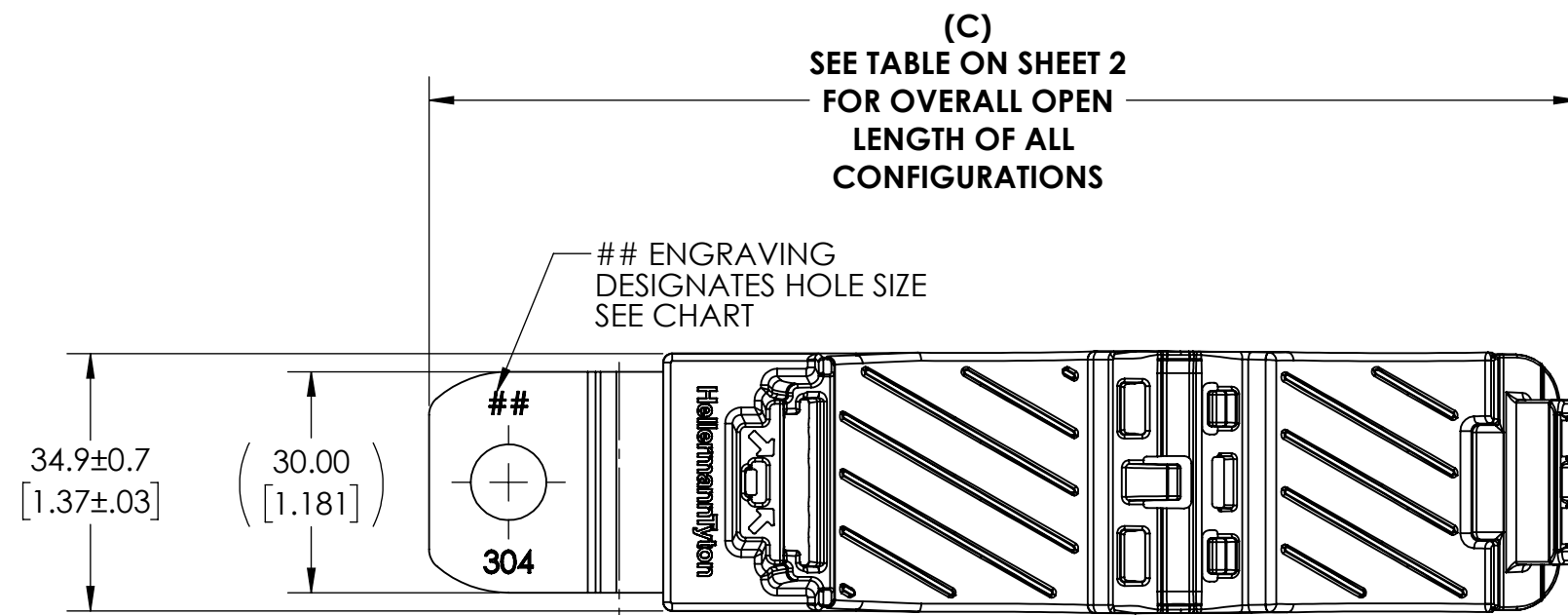


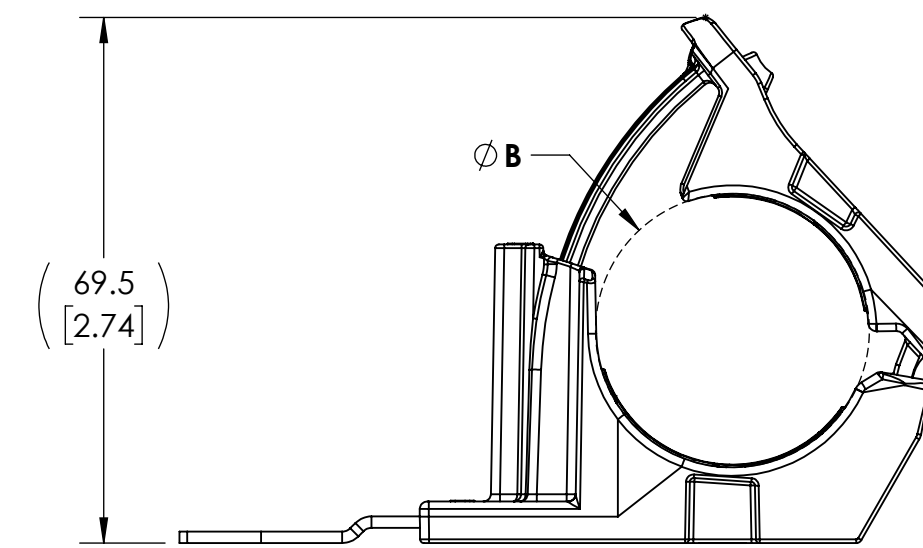
Revision level			Revision Record	Changed	Date	Approved	Date
Drawing	State	Part					
05.1	Design Release	B	SEE ECN# 015311	CTF	07/22/2019	MHT	07/22/2019



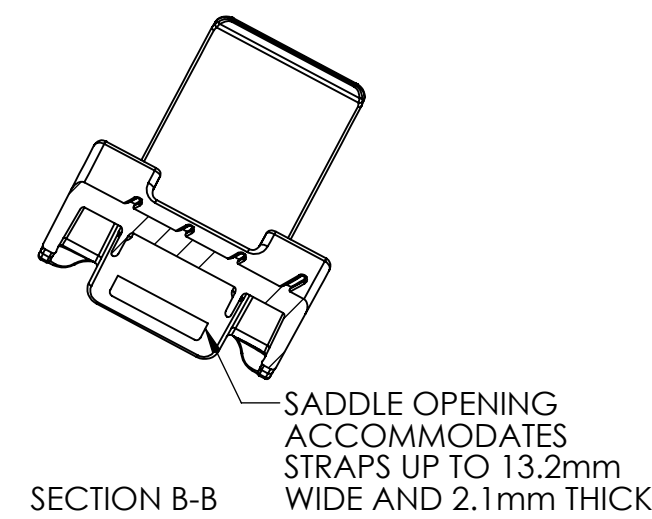
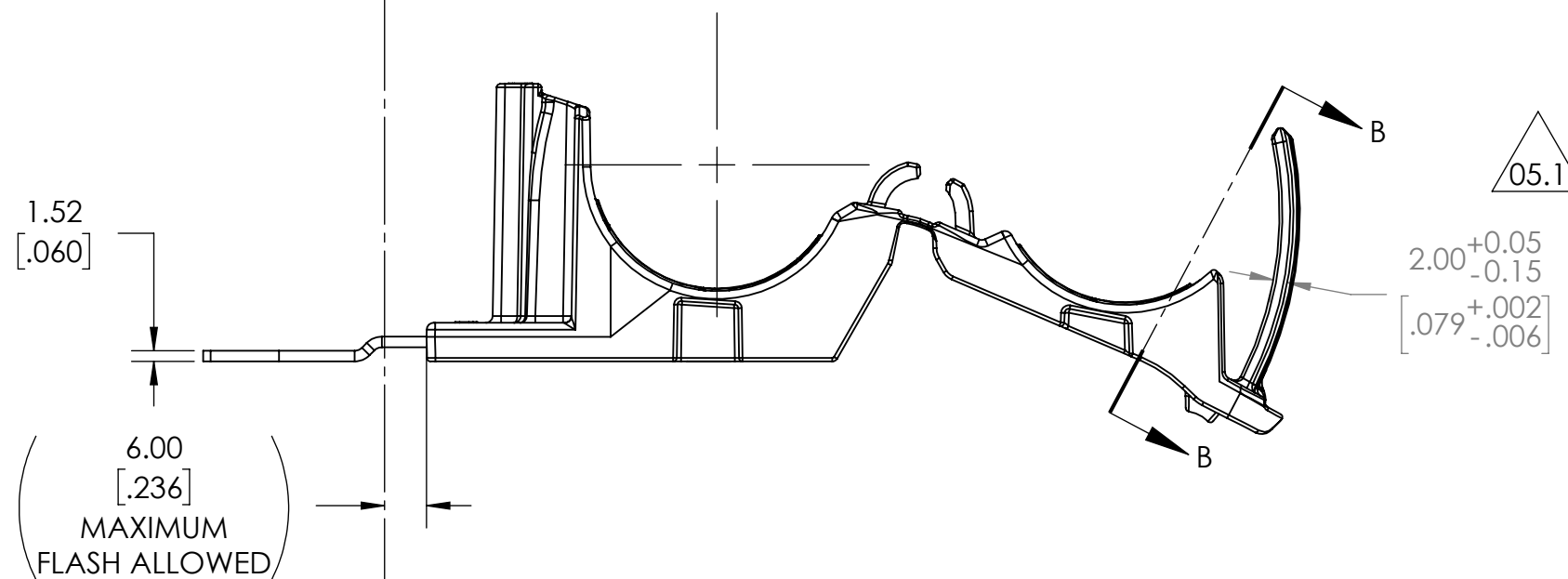
**CONFIGURATION 1 SHOWN
PRODUCT SHIPPED IN CLAMP OPEN POSITION**



MINIMUM BUNDLE DIAMETER



MAXIMUM BUNDLE DIAMETER



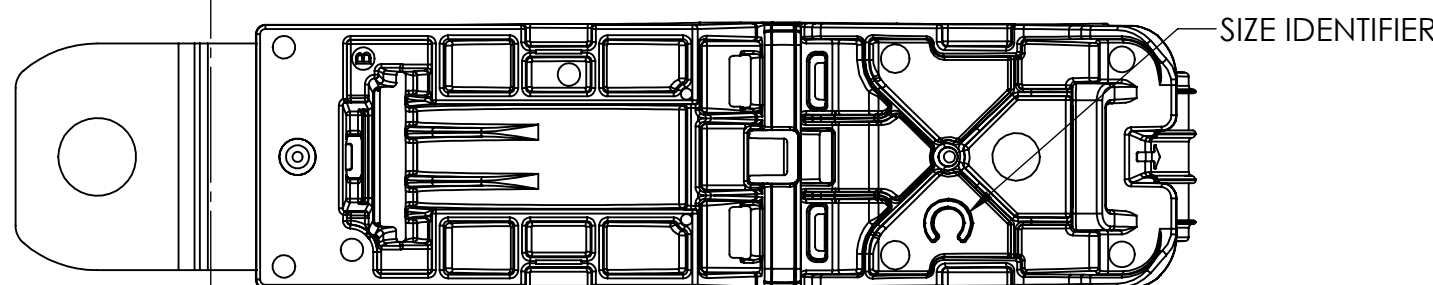
INITIAL MOLD VALIDATION:
DRY AS MOLDED WITH ≤ 0.5% MOISTURE CONTENT:

1. ITS-0003 RATCHET CLAMP SOLID MANDREL TEST: EXCEEDED 445 NEWTONS (100 LBS) MIN AT A NOMINAL BUNDLE DIAMETER OF 25.40 [1.000] TESTING ONLY REQUIRED OF CONFIGURATION *RCC180SM10SS, *RCC180LM10SS, AND *RCC90LM10SS *TESTING CAN BE SUBSTITUTED WITH M6, M8, M12 VERSION MOUNTING HOLES
2. ITS-0008 RATCHET CLAMP CLOSE & RELEASE TEST: EXCEEDED 445 NEWTONS (100 LBS) MIN AT A NOMINAL BUNDLE DIAMETER OF 25.40 [1.000] AFTER CLOSING AND RELEASING 40 TIMES
3. ITS-0014 RATCHET CLAMP LOW TEMP HINGE TEST: NO DAMAGE OCCURRED AFTER BENDING LIVING HINGE 40 TIMES AT -40°C

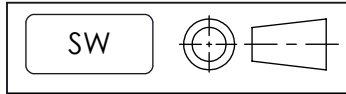
PERFORMANCE REQUIREMENTS:
DRY AS MOLDED WITH ≤ 0.5% MOISTURE CONTENT:

4. ITS-0001 RATCHET CLAMP SPLIT MANDREL TEST: 445 NEWTONS (100 LBS) MIN AT A NOMINAL BUNDLE DIAMETER OF 25.40 [1.000]
5. MAXIMUM PERCENT REGRIND PERMISSIBLE: 25%
6. MAXIMUM ALLOWABLE FLASH OR MISMATCH TO BE: 0.25mm

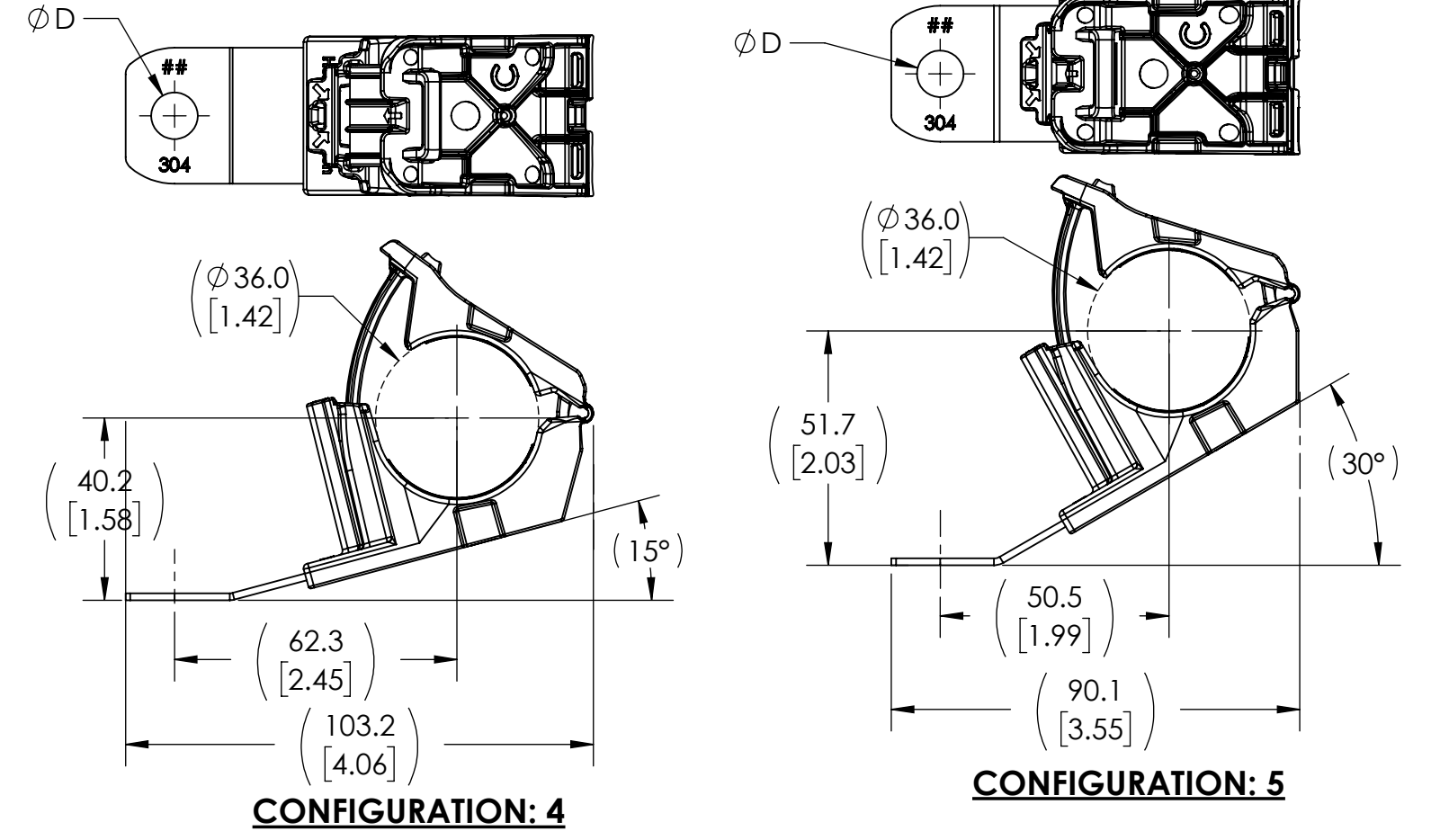
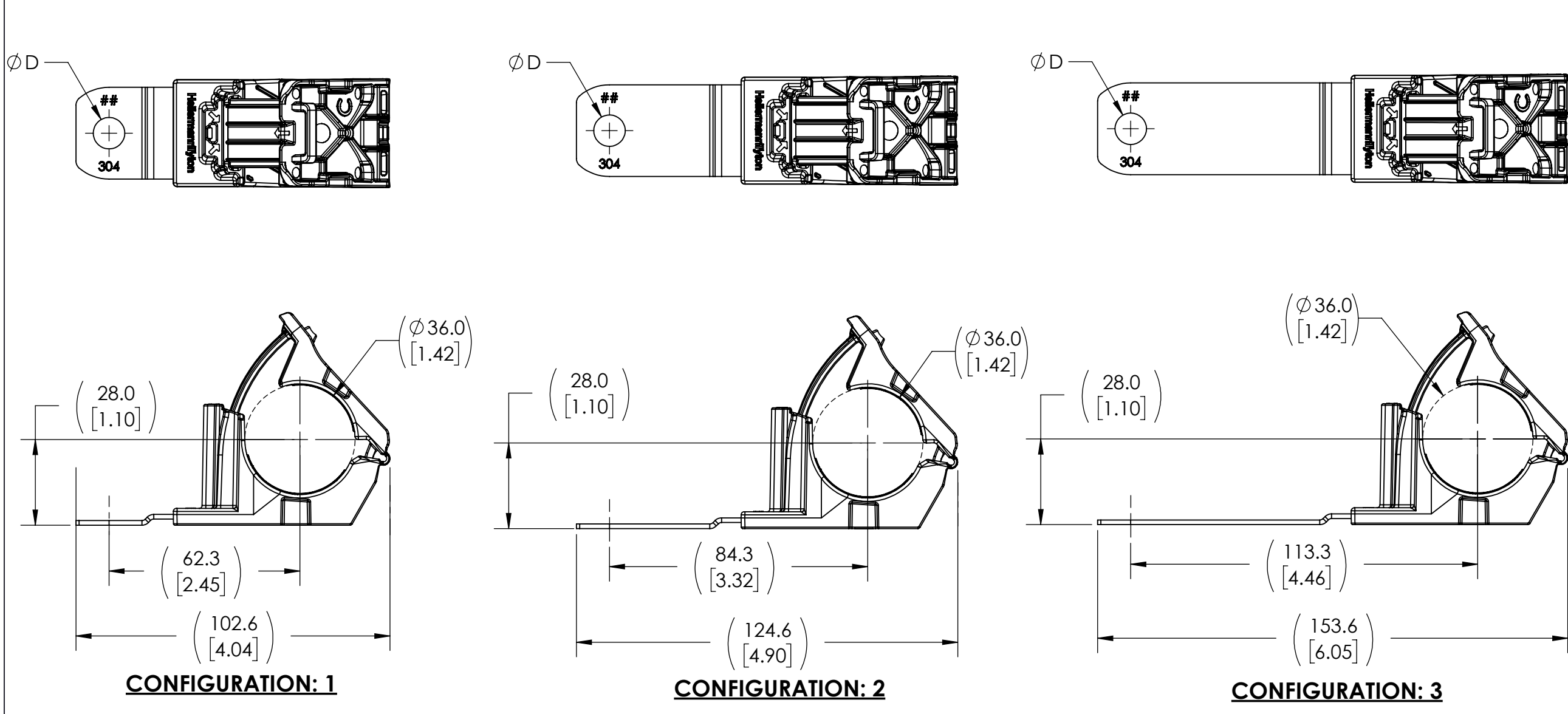
NOTE: TESTING #2, #3 AND #4 CAN BE DONE ON ANY TYPE NUMBER AND WILL APPLY TO ALL OTHER TYPE NUMBERS IN THE TABLE ON SHEET 2



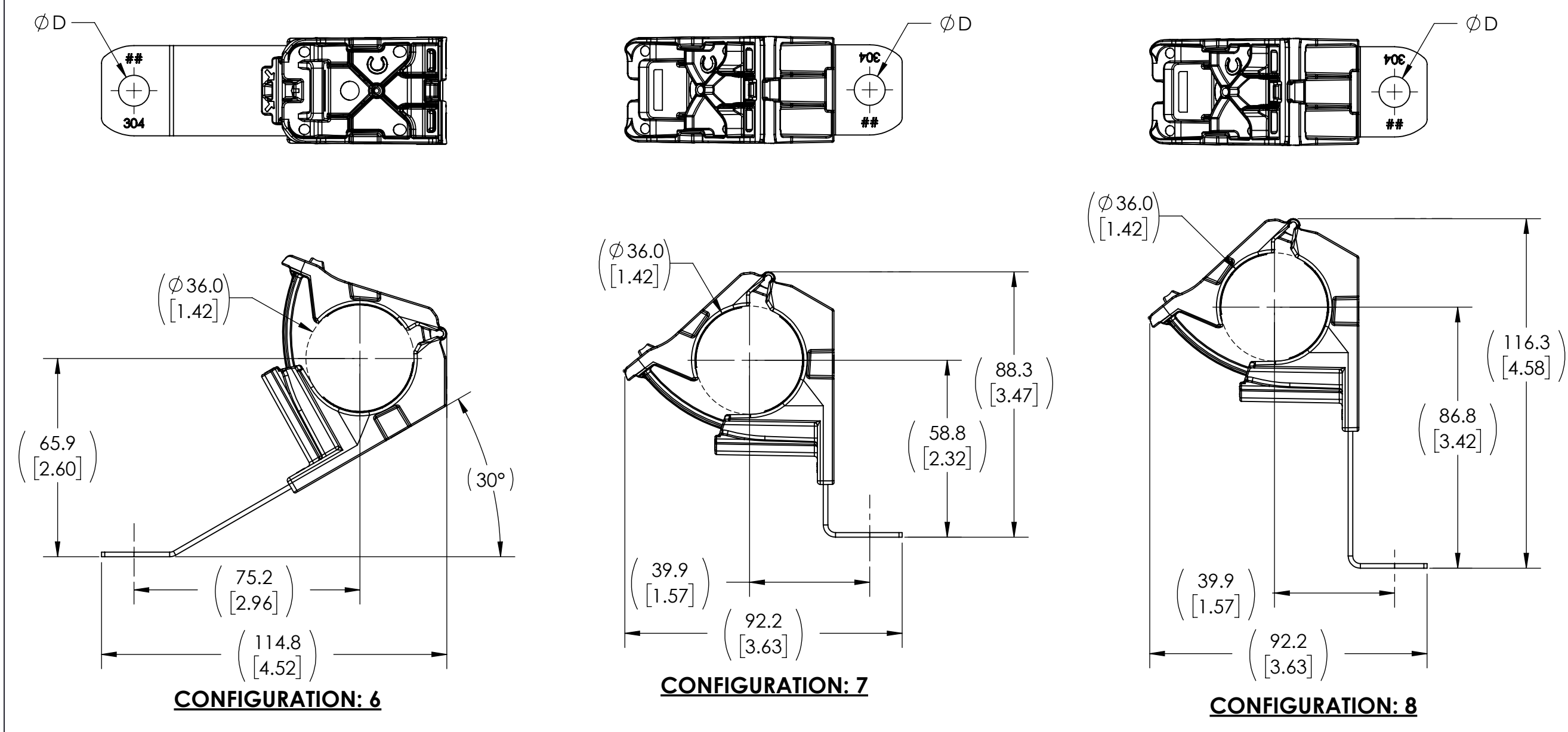
Notes	Material	Units: millimeters Dimension without tolerances details to: .xxx = ±.013 .xx = ±.13 .x = ±.3 None = ±.8 < = ±0.5*	The copyright of this drawing is reserved by HellermannTyton. It is issued on condition that it is not reproduced, copied, or disclosed to a third party, either wholly or in part, without the consent of HellermannTyton.	Drawn	CRB	06/28/16	Article/Type-No SEE CHART (SHEET 2)	Scale 1:1
				Approved	MHT	06/28/16		
	1. PA66HIRHSUV 2. STAINLESS STEEL						Title RCC RATCHET P CLAMP, SIZE C, CLAMP RANGE 19.4 TO 36.0, STAINLESS STEEL	Project Number PRP16-1242
							Drawing-No 16-1242-103-CSU	PRODUCTION : Phase Format C Sheet 1/2



Revision level			Revision Record	Changed	Date	Approved	Date
Drawing	State	Part					
05.1	Design Release	B	SEE ECN# 015311	CTF	07/22/2019	MHT	07/22/2019



**ALL VIEWS IN MAXIMUM BUNDLE DIAMETER
PRODUCT SHIPPED IN CLAMP OPEN POSITION**



CONFIGURATION	DESCRIPTION	D ±0.13	TYPE	## ENGRAVING	C - OVERALL OPEN LENGTH REFERENCE (SEE SHEET 1)
1	180° SHORT	6.50 [.256]	RCC180SM6SS	6	156.1 [6.15]
		8.31 [.327]	RCC180SM8SS	8	
		10.29 [.405]	RCC180SM10SS	10	
		12.95 [.510]	RCC180SM12SS	12	
2	180° MEDIUM	6.50 [.256]	RCC180MM6SS	6	178.1 [7.01]
		8.31 [.327]	RCC180MM8SS	8	
		10.29 [.405]	RCC180MM10SS	10	
3	180° LONG	6.50 [.256]	RCC180LM6SS	6	207.1 [8.15]
		8.31 [.327]	RCC180LM8SS	8	
		10.29 [.405]	RCC180LM10SS	10	
4	15° SHORT	6.50 [.256]	RCC15SM6SS	6	164.0 [6.46]
		8.31 [.327]	RCC15SM8SS	8	
		10.29 [.405]	RCC15SM10SS	10	
5	30° SHORT	6.50 [.256]	RCC30SM6SS	6	161.9 [6.37]
		8.31 [.327]	RCC30SM8SS	8	
		10.29 [.405]	RCC30SM10SS	10	
6	30° LONG	6.50 [.256]	RCC30LM6SS	6	190.4 [7.50]
		8.31 [.327]	RCC30LM8SS	8	
		10.29 [.405]	RCC30LM10SS	10	
7	90° SHORT	6.50 [.256]	RCC90SM6SS	6	141.8 [5.58]
		8.31 [.327]	RCC90SM8SS	8	
		10.29 [.405]	RCC90SM10SS	10	
8	90° LONG	6.50 [.256]	RCC90LM6SS	6	169.8 [6.69]
		8.31 [.327]	RCC90LM8SS	8	
		10.29 [.405]	RCC90LM10SS	10	
		12.95 [.510]	RCC90LM12SS	12	

Notes	Material	Units: millimeters	Drawn	CRB	06/28/16	Article/Type-No	SEE CHART	Scale	2:3
	1. PA66HIRSUV 2. STAINLESS STEEL	Dimension without tolerances details to: .xxx = ±.013 .xx = ±.13 .x = ±.3 None = ±.8 < = ±0.5*	Approved	MHT	06/28/16	Title	RCC RATCHET P CLAMP, SIZE C, CLAMP RANGE 19.4 TO 36.0, STAINLESS STEEL	Project Number	PRP16-1242
		The copyright of this drawing is reserved by HellermannTyton. It is issued on condition that it is not reproduced, copied, or disclosed to a third party, either wholly or in part, without the consent of HellermannTyton.	HellermannTyton		Drawing-No	PRODUCTION : Phase	Format	C	
			North America Email: corp@htamericas.com Web: www.hellermann-tyton.com		16-1242-103-CSU		Sheet	2/2	